

Property ref: 143175

Nightingale Way, Reading, RG30 1EX

£1,550 PCM

HASLAM'S
Lettings



A stunning, modern two bedroom apartment available at the Bellway site Renaissance, located to the West of Reading town centre.
Reading Borough Council - Tax Band C
No Pets
Water supply: Mains
Drainage info: Mains
Electricity supply: Mains
Gas supply: Mains
Broadband/Mobile Info: Connections available. For an indication of specific speeds and supply of Broadband and Mobile, we advise applicants go to the Ofcom website 'Broadband and Mobile Coverage Checker'.

- Two double bedrooms, master with en-suite
- Fully fitted kitchen with appliances
- Bathroom with shower over the bath
- Gas central heating, EPC rating B
- Allocated parking; No Pets allowed
- Part-furnished; Managed by LANDLORD

Available 12/08/2024

*Fees For Assured Shorthold Tenancies: when you rent a property from us you will be required to pay a sum equivalent to one weeks' rent for a holding deposit. Upon successful application, this amount will be off set against your first months' rent. You will also be required to pay a security deposit equivalent to 5 weeks' rent which will be held and protected in line with Deposit legislation. For more information about our fees please visit: www.haslams.net
Fees for all other tenancies (Non Housing Act Tenancies / Company Lets): when you rent a property from us we will charge you a one-off fee per property. This charge is the equivalent of 15 days of the monthly rental charge (+VAT) with a minimum fee of £450 (inc.VAT) up to a maximum of £650 (inc.VAT). Other fees may apply depending on your circumstances.

0118 960 1055

lettings@haslams.net www.haslams.net

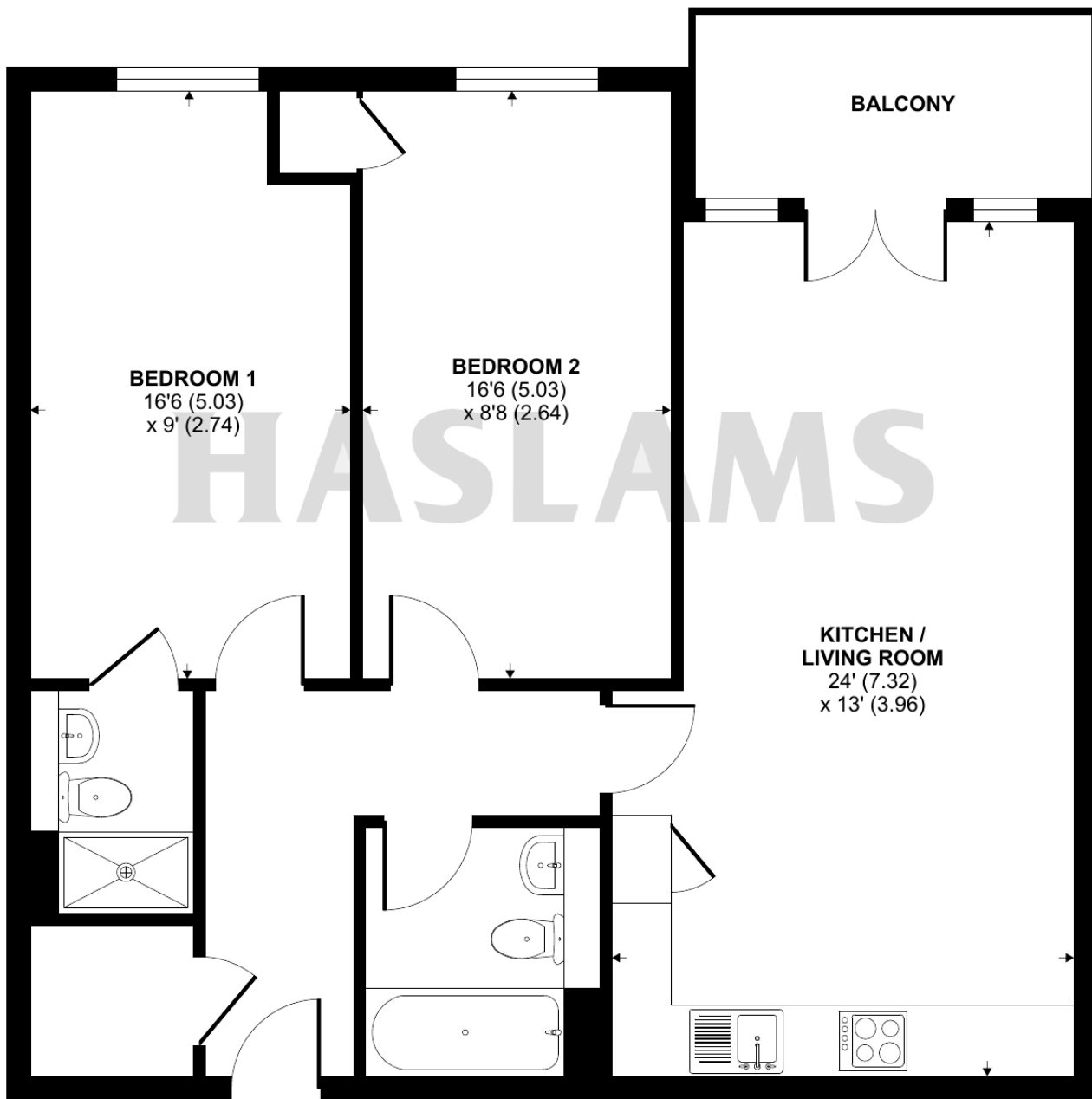
Haslams Estate Agents Ltd, 159 Friar Street, Reading, Berkshire, RG1 1HE



Nightingale Way, Reading, RG30

Approximate Area = 770 sq ft / 71.5 sq m

For identification only - Not to scale



FIRST FLOOR



Floor plan produced in accordance with RICS Property Measurement Standards incorporating International Property Measurement Standards (IPMS2 Residential). © n1cheom 2022. Produced for Haslams. REF: 843131