

Property ref: 149914

Bosworth House, Reading, RG30 1DU

£1,495 PCM

HASLAM'S
Lettings



Located to the West of Reading town centre is this well presented 3rd floor apartment. The property benefits from open plan living, two bedrooms, two bathrooms and allocated undercroft parking. Reading Borough Council tax band C.

Water supply: Mains

Drainage info: Mains

Electricity supply: Mains

Gas supply: Communal boiler

Broadband/Mobile Info: Connections available. For an indication of specific speeds and supply of Broadband and Mobile, we advise applicants go to the Ofcom website 'Broadband and Mobile Coverage Checker'.

- Two double bedrooms
- Two bathrooms; No pets allowed
- Allocated undercroft parking
- EPC rating B; £70 per month sundry to cover hot water and heating
- Furnished; Resident's lift in the building
- Managed by HASLAM'S

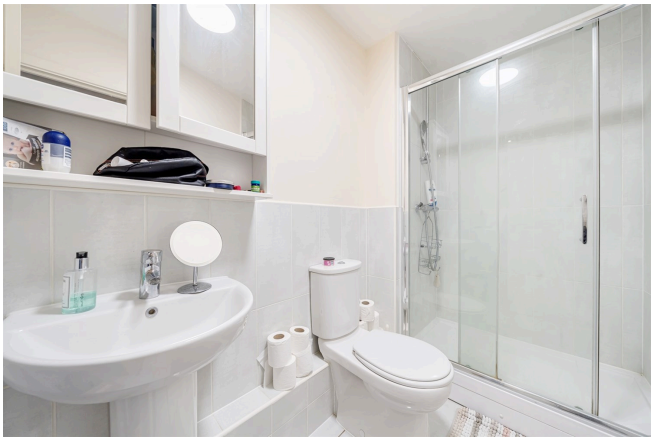
Available 12/08/2024

*Fees For Assured Shorthold Tenancies: when you rent a property from us you will be required to pay a sum equivalent to one weeks' rent for a holding deposit. Upon successful application, this amount will be off set against your first months' rent. You will also be required to pay a security deposit equivalent to 5 weeks' rent which will be held and protected in line with Deposit legislation. For more information about our fees please visit: www.haslams.net
Fees for all other tenancies (Non Housing Act Tenancies / Company Lets): when you rent a property from us we will charge you a one-off fee per property. This charge is the equivalent of 15 days of the monthly rental charge (+VAT) with a minimum fee of £450 (inc.VAT) up to a maximum of £650 (inc.VAT). Other fees may apply depending on your circumstances.

0118 960 1055

lettings@haslams.net www.haslams.net

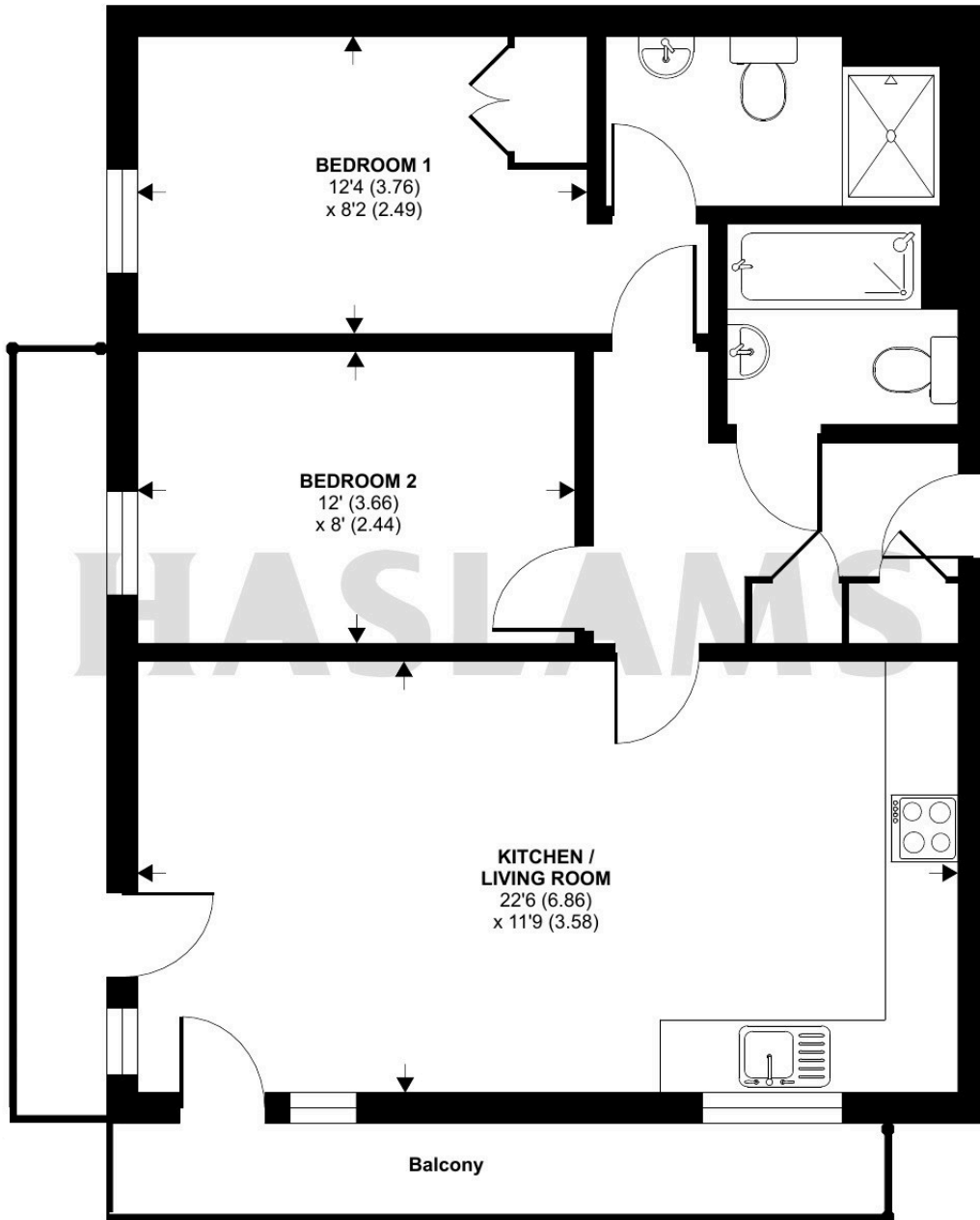
Haslams Estate Agents Ltd, 159 Friar Street, Reading, Berkshire, RG1 1HE



Battle Square, Reading, RG30

Approximate Area = 653 sq ft / 60.7 sq m

For identification only - Not to scale



FIRST FLOOR



Floor plan produced in accordance with RICS Property Measurement Standards incorporating International Property Measurement Standards (IPMS2 Residential). © n1cheom 2023. Produced for Haslamss. REF: 931798