

Property ref: 142280

## Carroway Street, Reading, RG1 3FZ

£1,950 PCM

**HASLAM'S**  
Lettings



A modern, two double bedroom sixth floor apartment located in Reading town centre, built by Berkeley Homes.

Reading Borough Council- Tax Band D. No Parking.

Heating Type (Gas, Elec, communal boiler etc.): Communal

Water supply: Mains

Drainage info: Mains

Electricity supply: Mains

Gas supply: Communal

Broadband/Mobile Info: Connections available. For an indication of specific speeds and supply of Broadband and Mobile, we advise applicants go to the Ofcom website 'Broadband and Mobile Coverage Checker'.

- Two double bedrooms; Master with en suite
- Family bathroom with shower over the bath
- Private balcony
- Fully fitted kitchen with appliances
- EPC rating B; Furnished
- Managed by LANDLORD

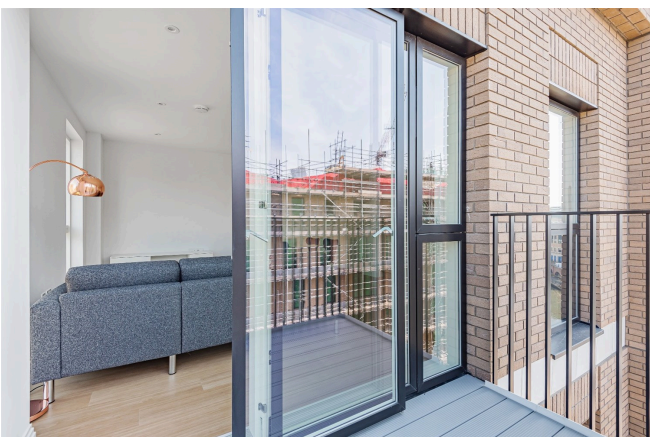
### Available 31/07/2024

will be required to pay a sum equivalent to one weeks' rent for a holding deposit. Upon successful application, this amount will be off set against your first months' rent. You will also be required to pay a security deposit equivalent to 5 weeks' rent which will be held and protected in line with Deposit legislation. For more information about our fees please visit: [www.haslams.net](http://www.haslams.net)  
Fees for all other tenancies (Non Housing Act Tenancies / Company Lets): when you rent a property from us we will charge you a one-off fee per property. This charge is the equivalent of 15 days of the monthly rental charge (+VAT) with a minimum fee of £450 (inc.VAT) up to a maximum of £650 (inc.VAT). Other fees may apply depending on your circumstances.

**0118 960 1055**

**lettings@haslams.net [www.haslams.net](http://www.haslams.net)**

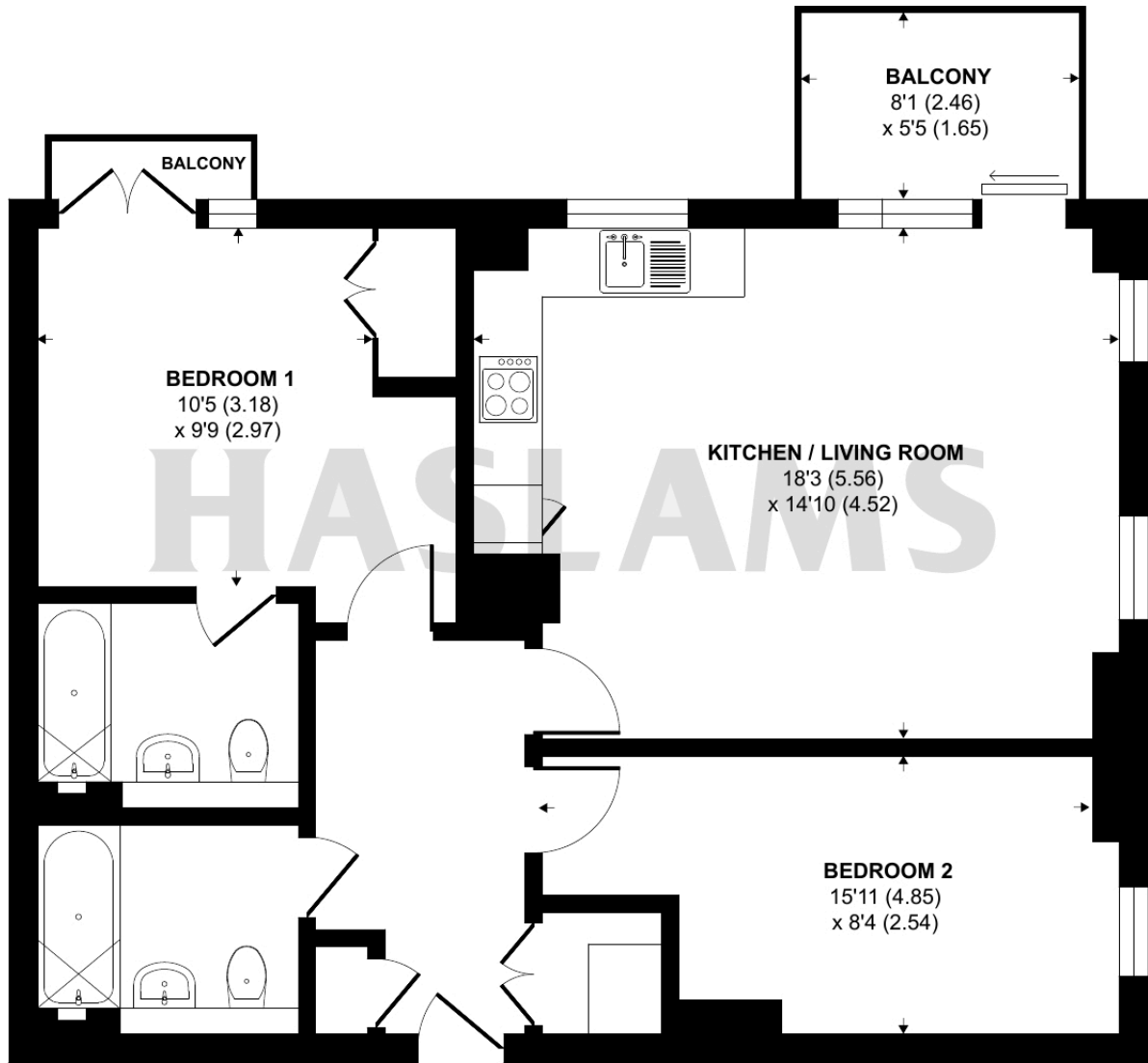
**Haslams Estate Agents Ltd, 159 Friar Street, Reading, Berkshire, RG1 1HE**



# Carraway Street, Reading, RG1

Approximate Area = 736 sq ft / 68 sq m

For identification only - Not to scale



**SECOND FLOOR**



Floor plan produced in accordance with RICS Property Measurement Standards incorporating International Property Measurement Standards (IPMS2 Residential). © n1checom 2022. Produced for Haslamss. REF: 827116