

Property ref: 51788

Headley Road, Reading, RG5 4JD

£1,625 PCM

HASLAM'S
Lettings



An attractive semi-detached home located within walking distance of Woodley precinct and convenient for local bus routes and A329 (m). Wokingham District Council - Tax Band C

Available 09/08/2024

- Two double bedrooms plus one single bedroom
- First floor bathroom with shower
- Living room and kitchen/dining room
- Double glazed; Gas central heating
- Enclosed private garden with gated access to car port and further parking space
- EPC rating C; Unfurnished; Managed by LANDLORD

*Fees For Assured Shorthold Tenancies: when you rent a property from us you will be required to pay a sum equivalent to one weeks' rent for a holding deposit. Upon successful application, this amount will be off set against your first months' rent. You will also be required to pay a security deposit equivalent to 5 weeks' rent which will be held and protected in line with Deposit legislation. For more information about our fees please visit: www.haslams.net
Fees for all other tenancies (Non Housing Act Tenancies / Company Lets): when you rent a property from us we will charge you a one-off fee per property. This charge is the equivalent of 15 days of the monthly rental charge (+VAT) with a minimum fee of £450 (inc.VAT) up to a maximum of £650 (inc.VAT). Other fees may apply depending on your circumstances.

0118 960 1055

lettings@haslams.net www.haslams.net

Haslams Estate Agents Ltd, 159 Friar Street, Reading, Berkshire, RG1 1HE

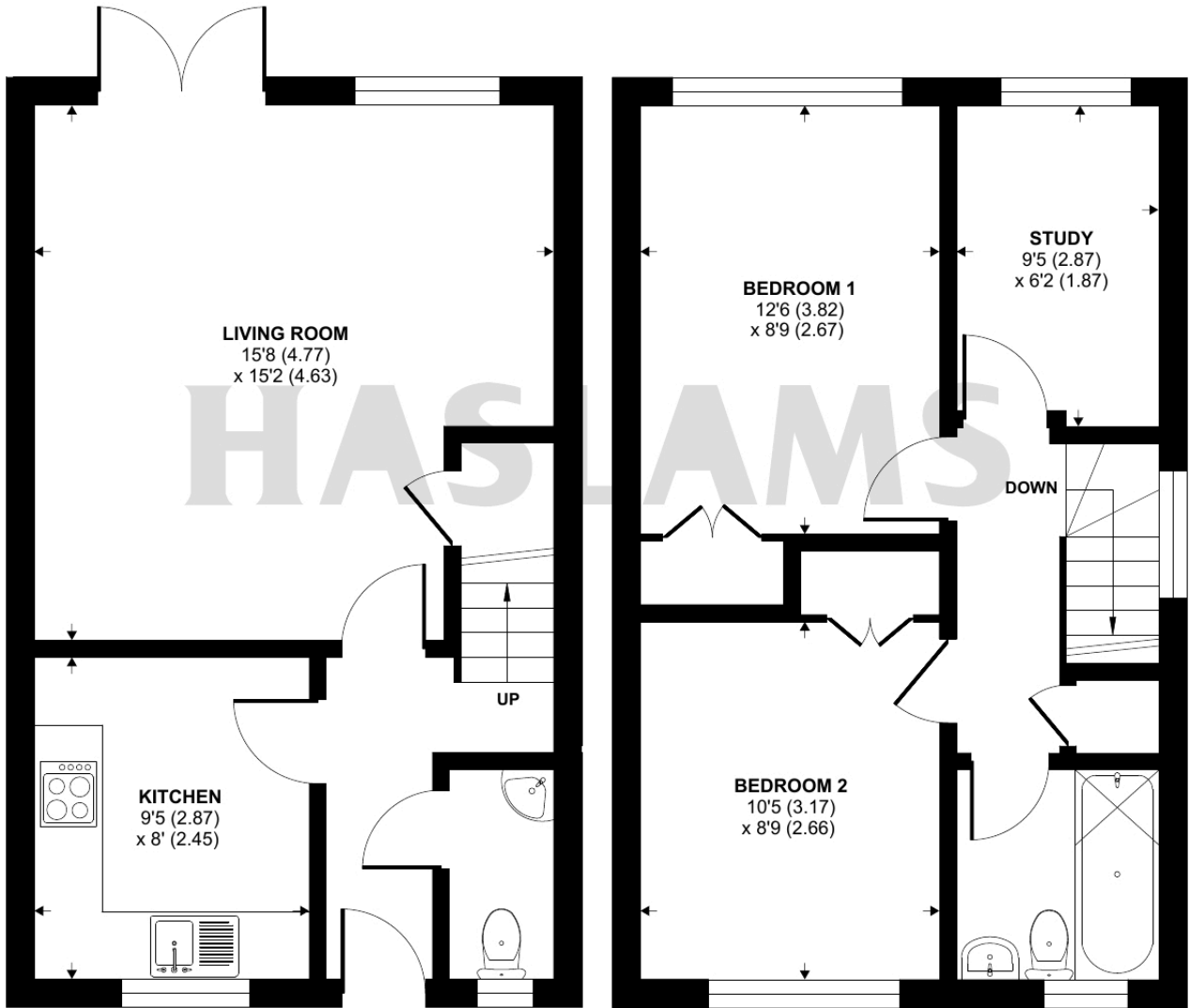
Heating: Gas
Water supply: Mains
Drainage info: Mains
Electricity supply: Mains
Gas supply: Mains
Broadband/Mobile Info: Connections available. For an indication of specific speeds and supply of Broadband and Mobile, we advise applicants go to the Ofcom website 'Broadband and Mobile Coverage Checker'.



Headley Road, Woodley, Reading, RG5

Approximate Area = 776 sq ft / 72 sq m

For identification only - Not to scale



GROUND FLOOR

FIRST FLOOR



Floor plan produced in accordance with RICS Property Measurement Standards incorporating International Property Measurement Standards (IPMS2 Residential). © n1cheom 2024. Produced for Haslam's. REF: 1145260