

Property ref: 33943

Rosby, Reading, RG2 9FS

£1,300 PCM

HASLAM'S
Lettings



An impressive top floor, two double bedroom apartment set within pleasant communal grounds and convenient for Green Park with excellent transport and bus links.
Reading Borough Council Tax Band C.

Available 10/08/2024

- Living room with juliet balcony overlooking communal grounds
- Two double bedrooms, master with en-suite
- Separate modern kitchen with appliances; No pets
- Entry-phone system; EPC Rating E; Electric heating
- Part furnished; bed and mattress' not included; Total floor area 58m2 - floorplan to follow
- Allocated parking; Managed by HASLAM'S

*Fees For Assured Shorthold Tenancies: when you rent a property from us you will be required to pay a sum equivalent to one weeks' rent for a holding deposit. Upon successful application, this amount will be off set against your first months' rent. You will also be required to pay a security deposit equivalent to 5 weeks' rent which will be held and protected in line with Deposit legislation. For more information about our fees please visit: www.haslams.net
Fees for all other tenancies (Non Housing Act Tenancies / Company Lets): when you rent a property from us we will charge you a one-off fee per property. This charge is the equivalent of 15 days of the monthly rental charge (+VAT) with a minimum fee of £450 (inc.VAT) up to a maximum of £650 (inc.VAT). Other fees may apply depending on your circumstances.

0118 960 1055

lettings@haslams.net www.haslams.net

Haslams Estate Agents Ltd, 159 Friar Street, Reading, Berkshire, RG1 1HE

Water supply: Mains

Drainage info: Mains

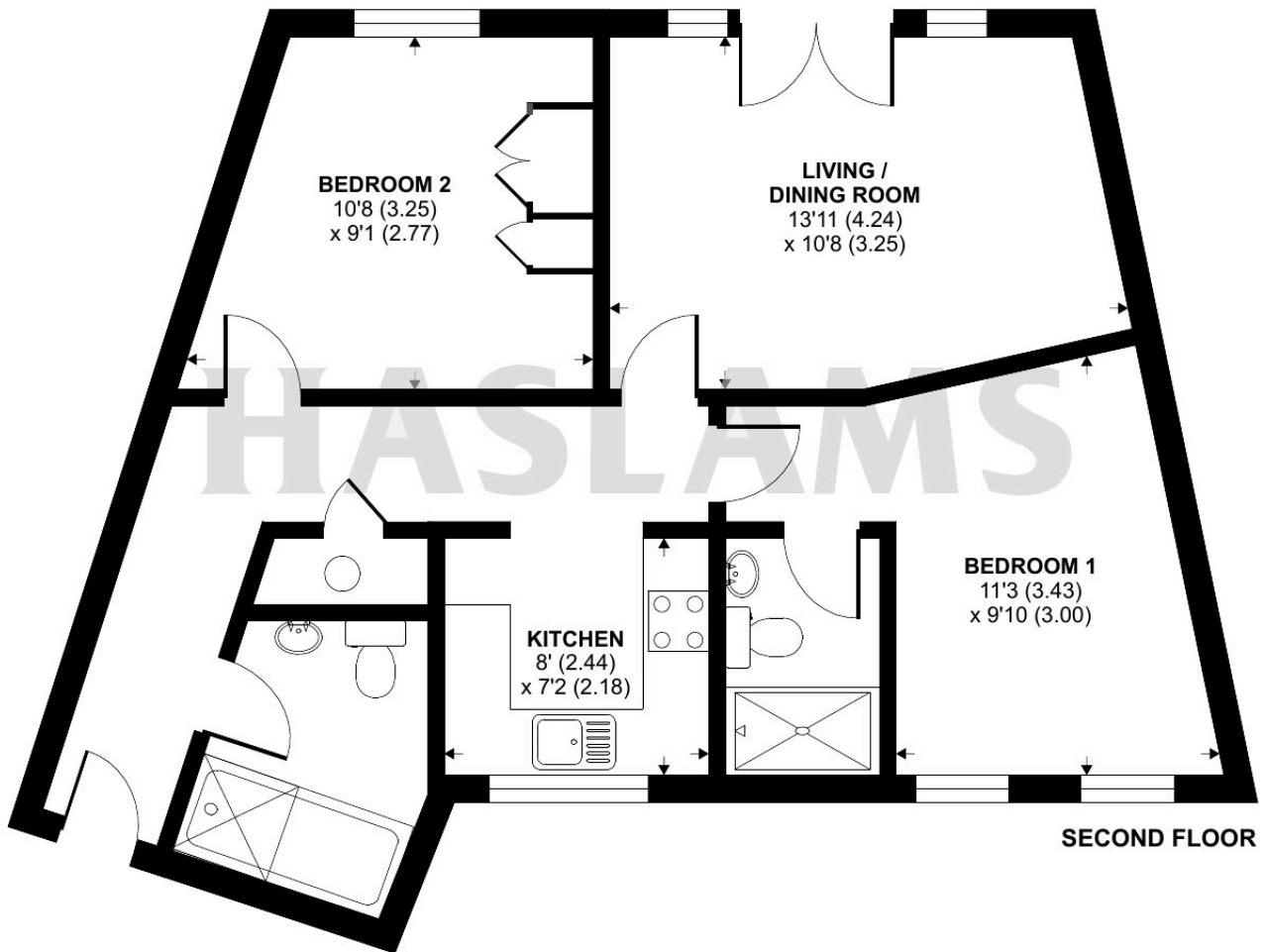
Electricity supply: Mains

Broadband/Mobile Info: Connections available. For an indication of specific speeds and supply of Broadband and Mobile, we advise applicants go to the Ofcom website 'Broadband and Mobile Coverage Checker'.

Rossby, Shinfield, Reading, RG2

Approximate Area = 690 sq ft / 64.1 sq m

For identification only - Not to scale



Floor plan produced in accordance with RICS Property Measurement Standards incorporating International Property Measurement Standards (IPMS2 Residential). © n/checom 2024. Produced for Haslam's. REF: 1136148