

Property ref: 118824

Hanover House, Reading, RG1 4NN

£1,200 PCM

HASLAM'S
Lettings



A stylish one double bedroom, fourth floor apartment ideally situated in Reading town centre. The property offers city living for a working professional and is within close proximity of Reading mainline station. Reading Borough Council tax band B.

Water supply: Mains

Drainage info: Mains

Electricity supply: Mains

Broadband/Mobile Info: Connections available. For an indication of specific speeds and supply of Broadband and Mobile, we advise applicants go to the Ofcom website 'Broadband and Mobile Coverage Checker'.

Available 22/07/2024

*Fees For Assured Shorthold Tenancies: when you rent a property from us you will be required to pay a sum equivalent to one weeks' rent for a holding deposit. Upon successful application, this amount will be off set against your first months' rent. You will also be required to pay a security deposit equivalent to 5 weeks' rent which will be held and protected in line with Deposit legislation. For more information about our fees please visit: www.haslams.net
Fees for all other tenancies (Non Housing Act Tenancies / Company Lets): when you rent a property from us we will charge you a one-off fee per property. This charge is the equivalent of 15 days of the monthly rental charge (+VAT) with a minimum fee of £450 (inc.VAT) up to a maximum of £650 (inc.VAT). Other fees may apply depending on your circumstances.

- One bedroom apartment furnished to a high standard
- Fully fitted kitchen with appliances; Total floor area 31m2 - floorplan to follow
- Close proximity to Reading mainline station
- Allocated parking; Electric heating
- EPC Rating D; Furnished
- Managed by HASLAM'S; No pets

0118 960 1055

lettings@haslams.net www.haslams.net

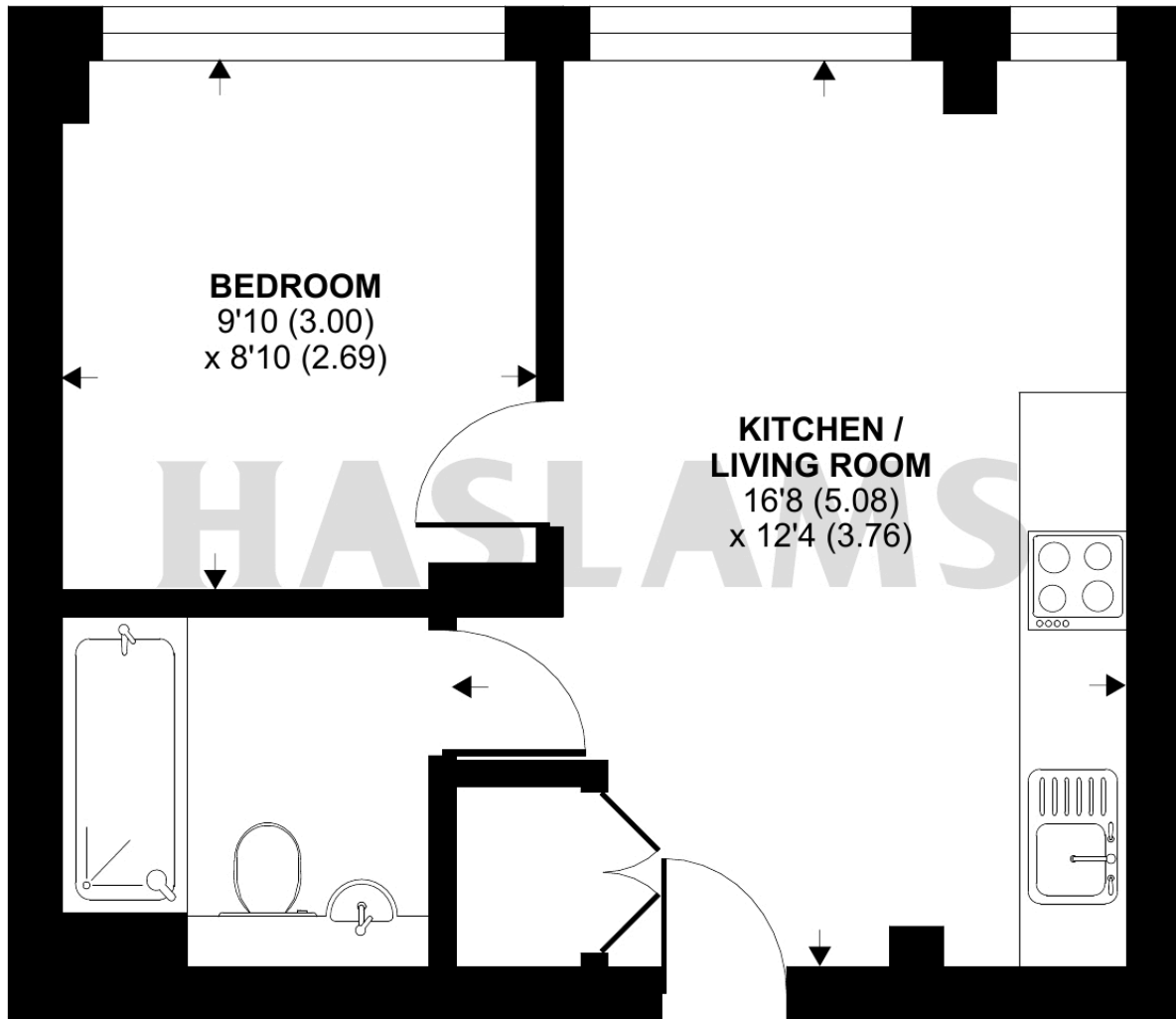
Haslams Estate Agents Ltd, 159 Friar Street, Reading, Berkshire, RG1 1HE



Kings Road, Reading, RG1

Approximate Area = 333 sq ft / 30.9 sq m

For identification only - Not to scale



FIRST FLOOR



Floor plan produced in accordance with RICS Property Measurement Standards incorporating International Property Measurement Standards (IPMS2 Residential). © n/checom 2024. Produced for Haslamss. REF: 1133520