

Property ref: 60339

Haden Square, Reading, RG1 6FE

£1,495 PCM

HASLAM'S
Lettings



A well presented two bed town house on a select development, located west of Reading town centre. With excellent links to the M4, bus services, & mainline train station, the property also benefits from an allocated parking space and an east facing garden.
Reading Borough Council- Band D.
No Pets.

Available 09/07/2024

- Two bedrooms; two bathrooms
- Lounge/diner; Allocated parking
- Gas central heating; Double glazing
- Fully fitted kitchen with appliances
- EPC rating B
- Unfurnished: Managed by HASLAM'S

*Fees For Assured Shorthold Tenancies: when you rent a property from us you will be required to pay a sum equivalent to one weeks' rent for a holding deposit. Upon successful application, this amount will be off set against your first months' rent. You will also be required to pay a security deposit equivalent to 5 weeks' rent which will be held and protected in line with Deposit legislation. For more information about our fees please visit: www.haslams.net
Fees for all other tenancies (Non Housing Act Tenancies / Company Lets): when you rent a property from us we will charge you a one-off fee per property. This charge is the equivalent of 15 days of the monthly rental charge (+VAT) with a minimum fee of £450 (inc.VAT) up to a maximum of £650 (inc.VAT). Other fees may apply depending on your circumstances.

0118 960 1055

lettings@haslams.net www.haslams.net

Haslams Estate Agents Ltd, 159 Friar Street, Reading, Berkshire, RG1 1HE

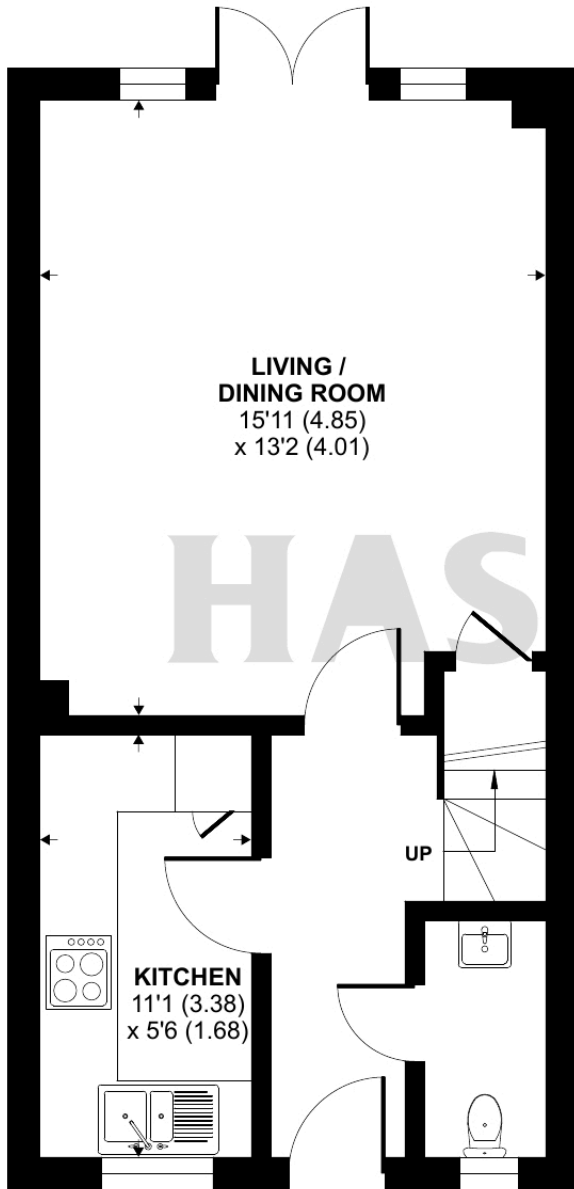
Water supply: Mains
Drainage info: Mains
Electricity supply: Mains
Gas supply: Mains
Broadband/Mobile Info: Connections available. For an indication of specific speeds and supply of Broadband and Mobile, we advise applicants go to the Ofcom website 'Broadband and Mobile Coverage Checker'.



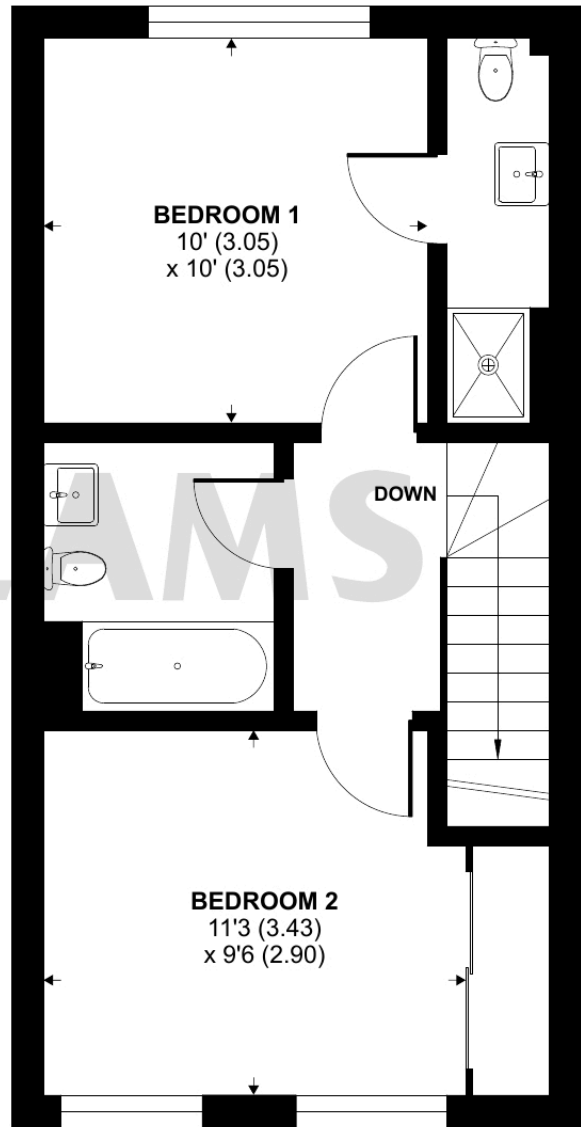
Haden Square, Reading, RG1

Approximate Area = 724 sq ft / 67.2 sq m

For identification only - Not to scale



GROUND FLOOR



FIRST FLOOR



Floor plan produced in accordance with RICS Property Measurement Standards incorporating International Property Measurement Standards (IPMS2 Residential). © n/checom 2024. Produced for Haslam's. REF: 1131584