

Property ref: 57022

Nelson Terrace, Reading, RG1 5AJ

£1,650 PCM

HASLAM'S
Lettings



A modernised three bedroom, split-level maisonette located on the central-east side of Reading town centre close the Reading mainline station and Royal Berkshire Hospital.
Reading Borough Council Tax band C.
Water supply: Mains
Drainage info: Mains
Electricity supply: Mains
Gas supply: Mains
Broadband/Mobile Info: Connections available. For an indication of specific speeds and supply of Broadband and Mobile, we advise applicants go to the Ofcom website 'Broadband and Mobile Coverage Checker'.

- Three bedrooms; Two bathrooms
- Excellent access to the town centre and trains
- Fully fitted kitchen; EPC rating C
- Furnished; Allocated parking
- Spacious living room; Gas central heating
- Managed by HASLAM'S; No pets allowed

Available 01/07/2024

*Fees For Assured Shorthold Tenancies: when you rent a property from us you will be required to pay a sum equivalent to one weeks' rent for a holding deposit. Upon successful application, this amount will be off set against your first months' rent. You will also be required to pay a security deposit equivalent to 5 weeks' rent which will be held and protected in line with Deposit legislation. For more information about our fees please visit: www.haslams.net
Fees for all other tenancies (Non Housing Act Tenancies / Company Lets): when you rent a property from us we will charge you a one-off fee per property. This charge is the equivalent of 15 days of the monthly rental charge (+VAT) with a minimum fee of £450 (inc.VAT) up to a maximum of £650 (inc.VAT). Other fees may apply depending on your circumstances.

0118 960 1055

lettings@haslams.net www.haslams.net

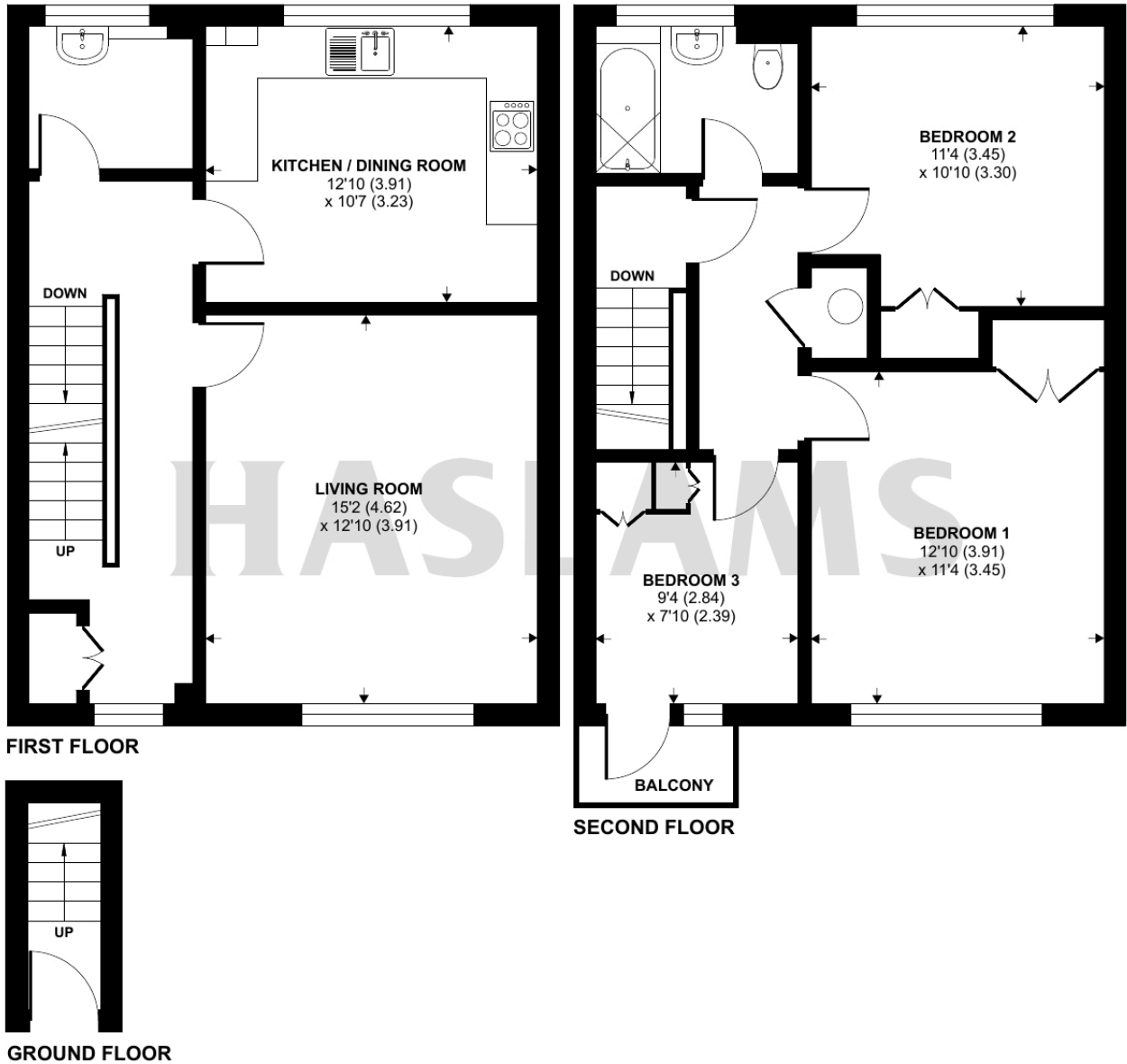
Haslams Estate Agents Ltd, 159 Friar Street, Reading, Berkshire, RG1 1HE



Nelson Terrace, London Road, Reading, RG1

Approximate Area = 1053 sq ft / 97.8 sq m

For identification only - Not to scale



Floor plan produced in accordance with RICS Property Measurement Standards incorporating International Property Measurement Standards (IPMS2 Residential). © n/checom 2024. Produced for Haslamss. REF: 1122393