

Property ref: 146921

Kennet House, Reading, RG1 3BJ

£2,200 PCM

HASLAM'S
Lettings



A stunning two bed third floor apartment with a corner balcony overlooking the River Kennet within walking distance to the Oracle shopping complex and Reading mainline station. Reading Borough Council Tax Band D.

Water supply: Mains

Drainage info: Mains

Electricity supply: Mains

Broadband/Mobile Info: Connections available. For an indication of specific speeds and supply of Broadband and Mobile, we advise applicants go to the Ofcom website 'Broadband and Mobile Coverage Checker'.

- Two double bedrooms; master with en-suite
- Fully fitted kitchen with built in appliances
- Family bathroom with shower over the bath
- Electric heating; EPC Rating B
- Allocated parking; No pets
- Furnished; Managed by Haslams

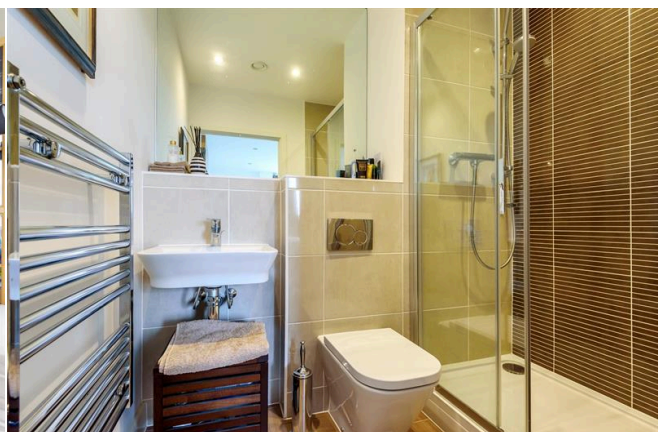
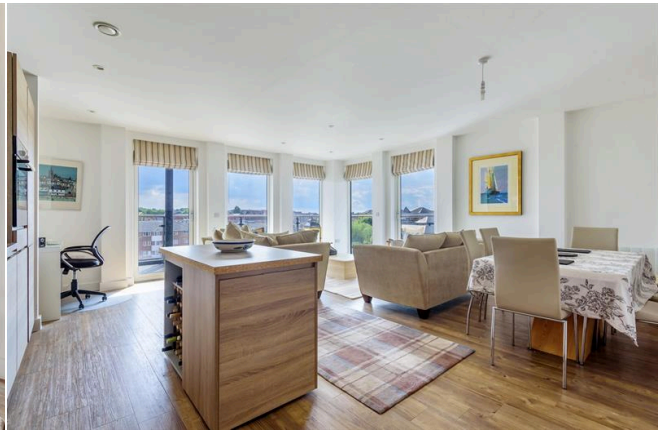
Available 01/07/2024

*Fees For Assured Shorthold Tenancies: when you rent a property from us you will be required to pay a sum equivalent to one weeks' rent for a holding deposit. Upon successful application, this amount will be off set against your first months' rent. You will also be required to pay a security deposit equivalent to 5 weeks' rent which will be held and protected in line with Deposit legislation. For more information about our fees please visit: www.haslams.net
Fees for all other tenancies (Non Housing Act Tenancies / Company Lets): when you rent a property from us we will charge you a one-off fee per property. This charge is the equivalent of 15 days of the monthly rental charge (+VAT) with a minimum fee of £450 (inc.VAT) up to a maximum of £650 (inc.VAT). Other fees may apply depending on your circumstances.

0118 960 1055

lettings@haslams.net www.haslams.net

Haslams Estate Agents Ltd, 159 Friar Street, Reading, Berkshire, RG1 1HE

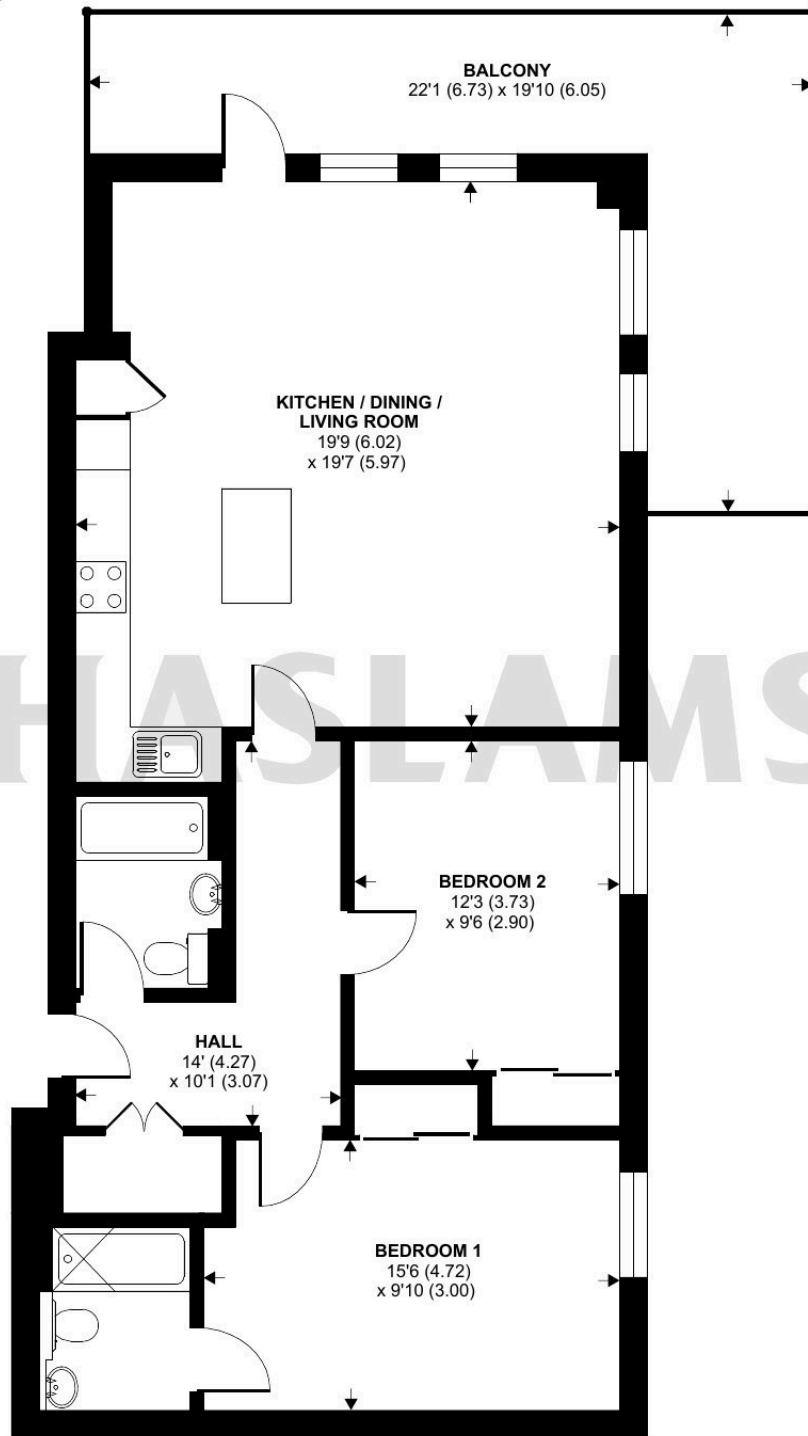




Kings Road, Reading, RG1

Approximate Area = 890 sq ft / 82.7 sq m

For identification only - Not to scale



Floor plan produced in accordance with RICS Property Measurement Standards incorporating International Property Measurement Standards (IPMS2 Residential). © n/checom 2022. Produced for Haslamms. REF: 902268