

Property ref: 89020

Montagu House, Reading, RG2 0PY

£1,250 PCM

HASLAM'S
Lettings



A modern one bedroom top floor apartment. This well decorated and homely property is situated in the sought-after Kennet Island development, within waling distance of Green Park, local amenities and with easy access to the M4 motorway. Property boasts an appliances, two televisions, bedding & a crockery pots & pans. Reading Borough Council- Band C.

Available Now

- A spacious, light and airy open plan living/kitchen area
- Double bedroom with built-in wardrobes
- Shower room; Allocated parking
- Furnished; EPC rating: C
- Walking distance to local amenities and bus routes
- Managed by HASLAM'S

*Fees For Assured Shorthold Tenancies: when you rent a property from us you will be required to pay a sum equivalent to one weeks' rent for a holding deposit. Upon successful application, this amount will be off set against your first months' rent. You will also be required to pay a security deposit equivalent to 5 weeks' rent which will be held and protected in line with Deposit legislation. For more information about our fees please visit: www.haslams.net
Fees for all other tenancies (Non Housing Act Tenancies / Company Lets): when you rent a property from us we will charge you a one-off fee per property. This charge is the equivalent of 15 days of the monthly rental charge (+VAT) with a minimum fee of £450 (inc.VAT) up to a maximum of £650 (inc.VAT). Other fees may apply depending on your circumstances.

0118 960 1055

lettings@haslams.net www.haslams.net

Haslams Estate Agents Ltd, 159 Friar Street, Reading, Berkshire, RG1 1HE

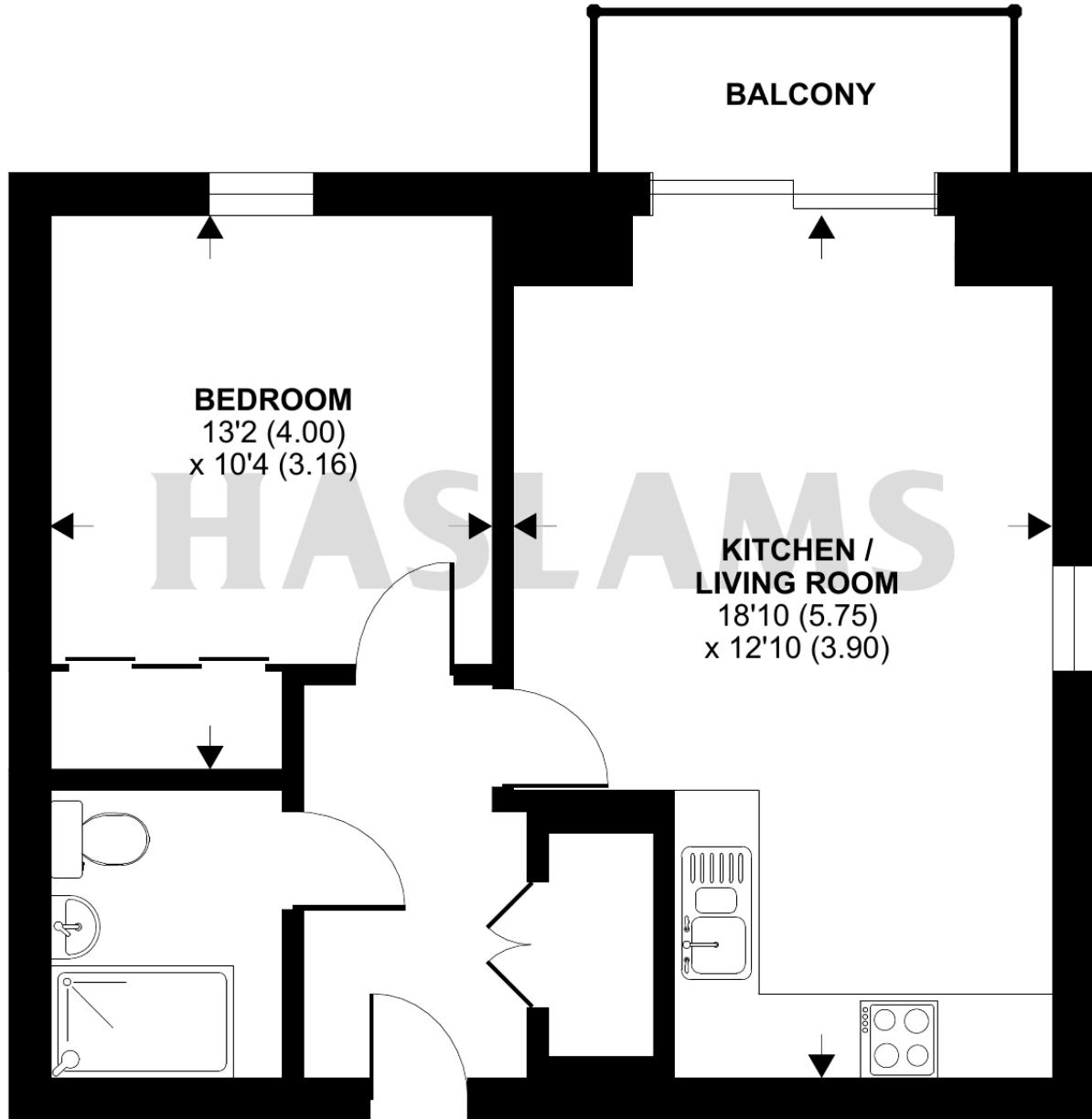
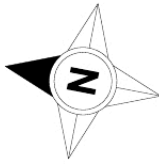
Water supply: Mains
Drainage info: Mains
Electricity supply: Mains
Gas supply: N/A
Broadband/Mobile Info: Connections available. For an indication of specific speeds and supply of Broadband and Mobile, we advise applicants go to the Ofcom website 'Broadband and Mobile Coverage Checker'.



Noo House Number, Property Address Here

Approximate Area = 487 sq ft / 45.2 sq m

For identification only - Not to scale



SIXTH FLOOR



Floor plan produced in accordance with RICS Property Measurement Standards incorporating International Property Measurement Standards (IPMS2 Residential). © n/checom 2024. Produced for Haslamss. REF: 1124214