

Property ref: 1904

Fobney Street, Reading, RG1 6BT

£1,500 PCM

HASLAM'S
Lettings



A well presented, modern two bedroom town centre apartment on the top floor of this small development overlooking the River Kennet. Reading Borough Council tax band D.

Water supply: Mains

Drainage info: Mains

Electricity supply: Mains

Gas supply: Mains

Broadband/Mobile Info: Connections available. For an indication of specific speeds and supply of Broadband and Mobile, we advise applicants go to the Ofcom website 'Broadband and Mobile Coverage Checker'.

Available 01/07/2024

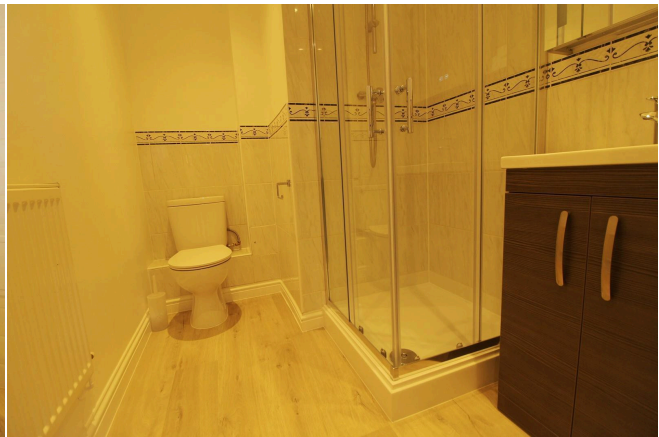
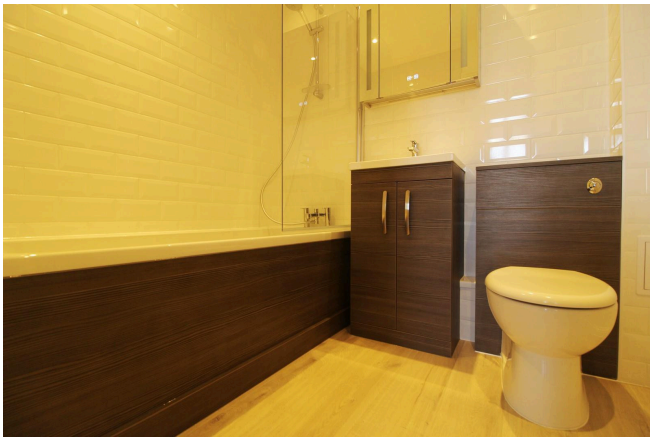
*Fees For Assured Shorthold Tenancies: when you rent a property from us you will be required to pay a sum equivalent to one weeks' rent for a holding deposit. Upon successful application, this amount will be off set against your first months' rent. You will also be required to pay a security deposit equivalent to 5 weeks' rent which will be held and protected in line with Deposit legislation. For more information about our fees please visit: www.haslams.net
Fees for all other tenancies (Non Housing Act Tenancies / Company Lets): when you rent a property from us we will charge you a one-off fee per property. This charge is the equivalent of 15 days of the monthly rental charge (+VAT) with a minimum fee of £450 (inc.VAT) up to a maximum of £650 (inc.VAT). Other fees may apply depending on your circumstances.

- Two double bedrooms
- En-suite shower room to master bedroom; further main bathroom
- Exclusive riverside development; No parking
- Living room and separate kitchen with appliances
- EPC Rating C; Gas central heating
- Furnished; Managed by LANDLORD


0118 960 1055

lettings@haslams.net www.haslams.net

Haslams Estate Agents Ltd, 159 Friar Street, Reading, Berkshire, RG1 1HE

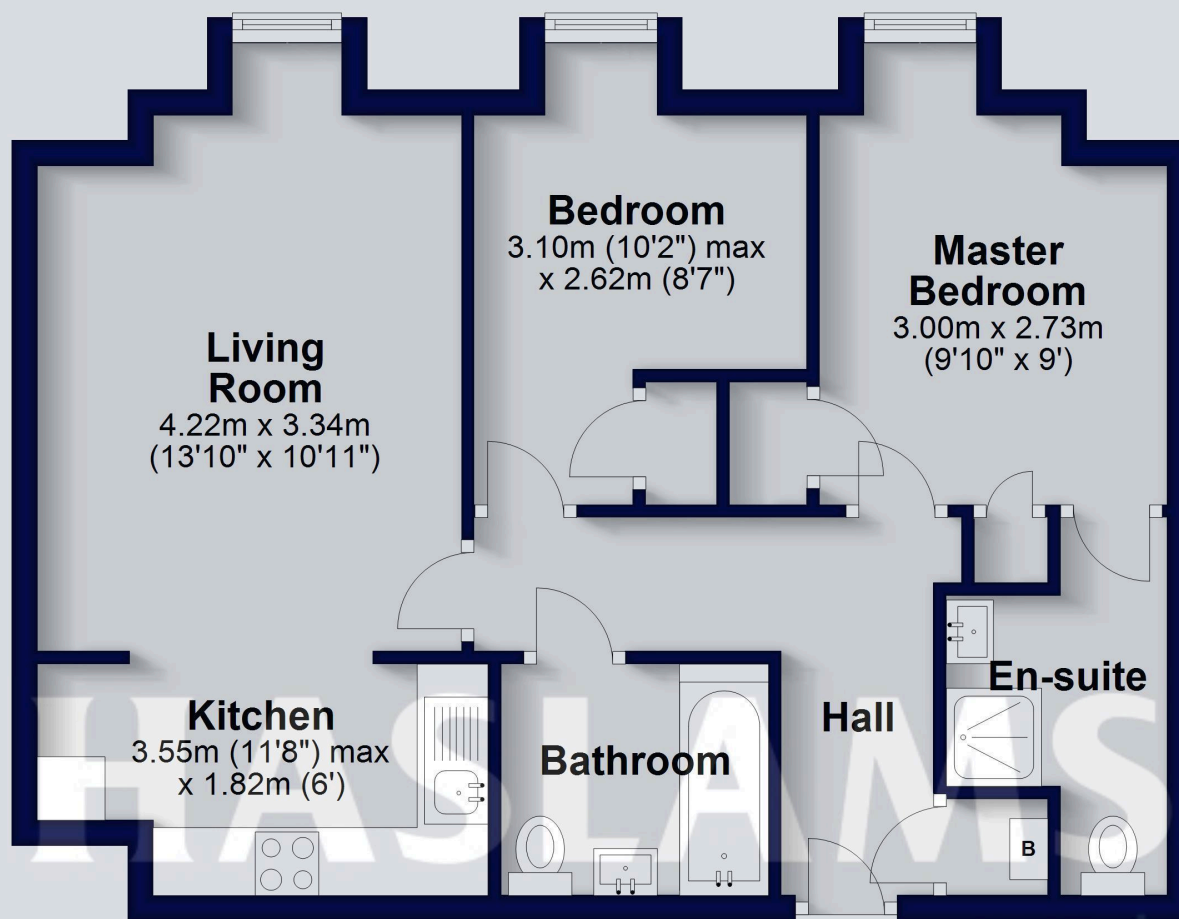


EPC

Energy Efficiency Rating		
	Current	Potential
<i>Very energy efficient - lower running costs</i>		
92-100 A		
81-91 B		
69-80 C	80	80
55-68 D		
39-54 E		
21-38 F		
1-20 G		
<i>Not energy efficient - higher running costs</i>		
England & Wales	EU Directive 2002/91/EC	

Fourth Floor

Approx. 54.9 sq. metres (590.6 sq. feet)



Total area: approx. 54.9 sq. metres (590.6 sq. feet)

This floorplan is for illustrative purposes only and is not to scale. The total area includes all the areas shown.
Plan produced using PlanUp.