

Property ref: 161533

## Palmer Street, Reading, RG1 3GX

£1,950 PCM

**HASLAM'S**  
Lettings



The Bond is a duplex 2-bedroom riverside apartment, in one of central Reading's most exclusive addresses. The ground floor welcomes you with a spacious kitchen/living area, perfect for versatile living. The thoughtfully designed first floor includes a master bedroom with fitted wardrobes and a stylish en-suite for added convenience, complemented by an additional bathroom to serve the second bedroom. Residents have access to the Huntley Wharf Concierge (open 12 hours a day, 7 days a week) for your convenience.

Council Tax TBC

### Available Now

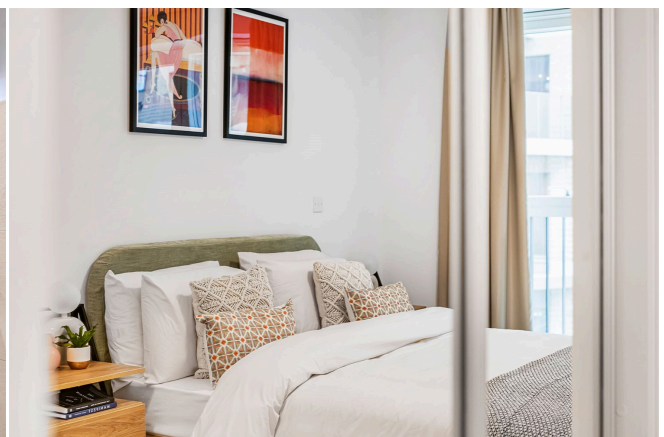
- Duplex 2 bedroom apartment; finished to an exceptional standard
- Fully fitted kitchen with high quality appliances
- Parking available for an additional £75pcm
- En-suite plus family bathroom
- Furnished; EPC rating B
- One month deposit; Managed by Touchstone

\*Fees For Assured Shorthold Tenancies: when you rent a property from us you will be required to pay a sum equivalent to one weeks' rent for a holding deposit. Upon successful application, this amount will be off set against your first months' rent. You will also be required to pay a security deposit equivalent to 5 weeks' rent which will be held and protected in line with Deposit legislation. For more information about our fees please visit: [www.haslams.net](http://www.haslams.net)  
Fees for all other tenancies (Non Housing Act Tenancies / Company Lets): when you rent a property from us we will charge you a one-off fee per property. This charge is the equivalent of 15 days of the monthly rental charge (+VAT) with a minimum fee of £450 (inc.VAT) up to a maximum of £650 (inc.VAT). Other fees may apply depending on your circumstances.

**0118 960 1055**

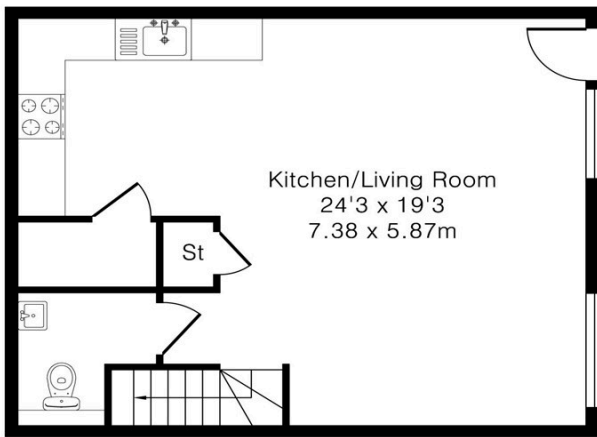
**[lettings@haslams.net](mailto:lettings@haslams.net) [www.haslams.net](http://www.haslams.net)**

**Haslams Estate Agents Ltd, 159 Friar Street, Reading, Berkshire, RG1 1HE**

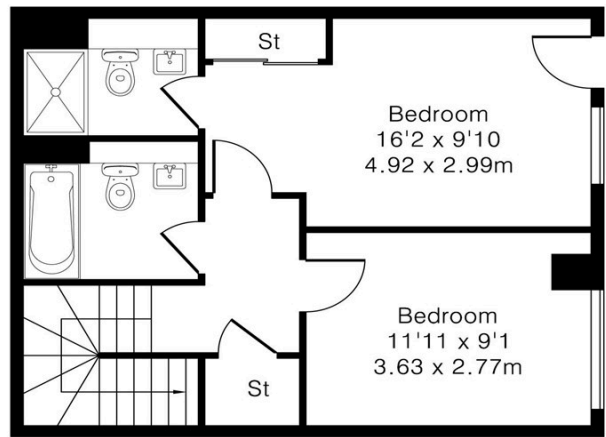




Approximate Gross Internal Area 908 sq ft – 84 sq m  
Ground Floor Area 454 sq ft – 42 sq m  
First Floor Area 454 sq ft – 42 sq m



Ground Floor



First Floor