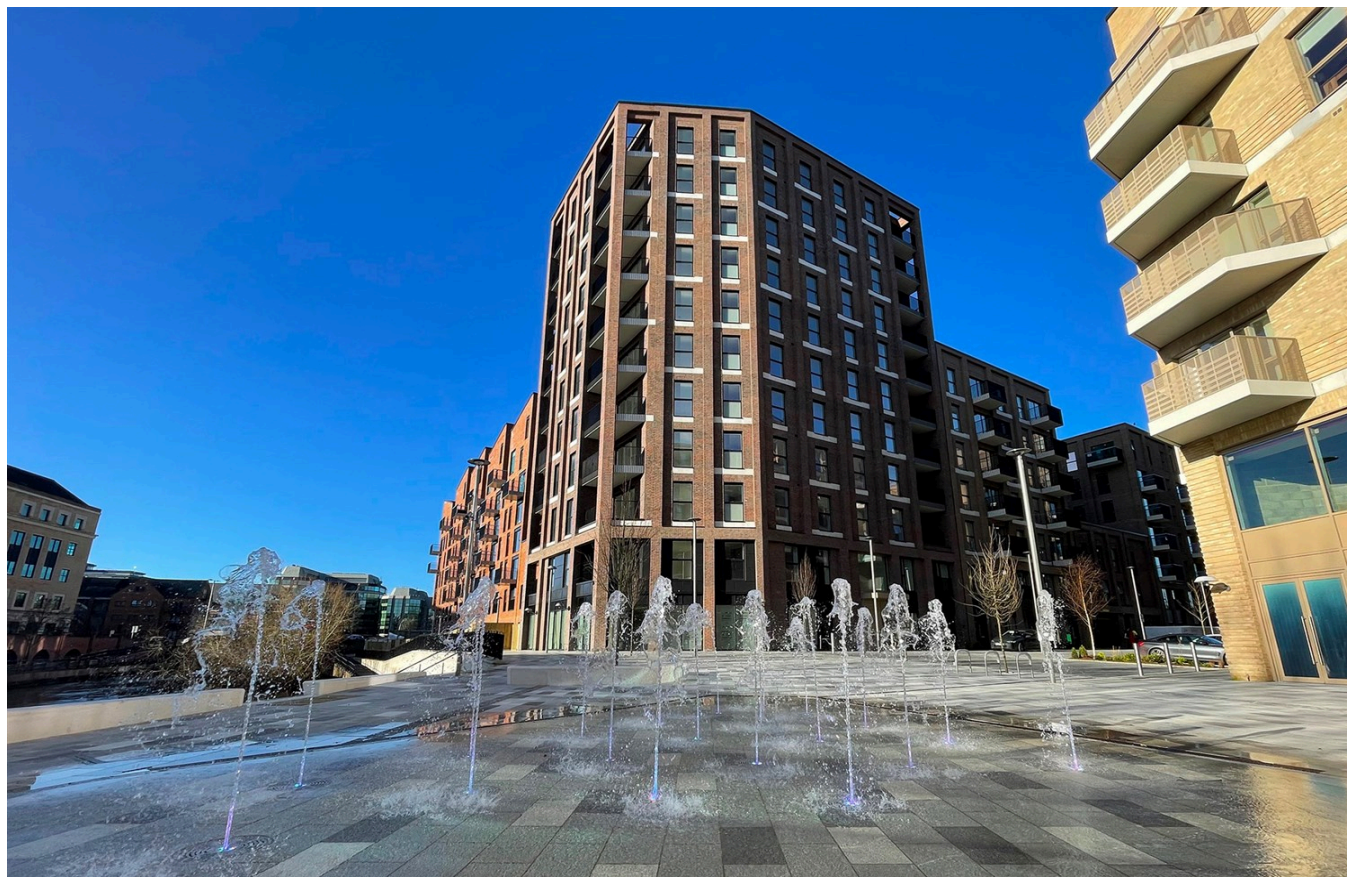


Property ref: 162004

Palmer Street, Reading, RG1 3HU

£1,925 PCM

HASLAM'S
Lettings



The Huntley allows you to discover the allure of luxury riverside living in this well-appointed 2-bedroom apartment available at Olivers Place. On entry you are met with a spacious kitchen/living area, combining modern design with practical functionality. The main bedroom has a stylish en-suite and fitted wardrobes. The location offers great connectivity to major cities including London and Birmingham via road and rail. Residents have access to the Huntley Wharf Concierge (open 12 hours a day, 7 days a week) for your convenience. Reading Borough Council Tax Band D.

- Two bedroom apartment finished to an exceptional standard
- Fully fitted kitchen with high quality appliances
- Balcony and views across Palmer Street
- Parking available for an additional £75pcm
- Furnished; Communal boiler; EPC rating B
- One month deposit; managed by Touchstone

Available Now

*Fees For Assured Shorthold Tenancies: when you rent a property from us you will be required to pay a sum equivalent to one weeks' rent for a holding deposit. Upon successful application, this amount will be off set against your first months' rent. You will also be required to pay a security deposit equivalent to 5 weeks' rent which will be held and protected in line with Deposit legislation. For more information about our fees please visit: www.haslams.net
Fees for all other tenancies (Non Housing Act Tenancies / Company Lets): when you rent a property from us we will charge you a one-off fee per property. This charge is the equivalent of 15 days of the monthly rental charge (+VAT) with a minimum fee of £450 (inc.VAT) up to a maximum of £650 (inc.VAT). Other fees may apply depending on your circumstances.

0118 960 1055

lettings@haslams.net www.haslams.net

Haslams Estate Agents Ltd, 159 Friar Street, Reading, Berkshire, RG1 1HE

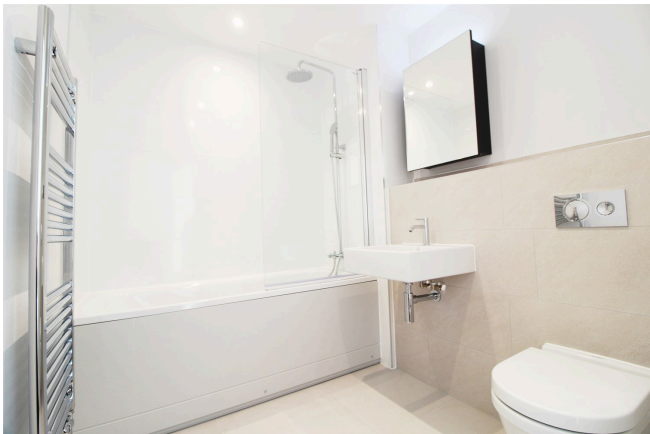
Water supply: Mains

Drainage info: Mains

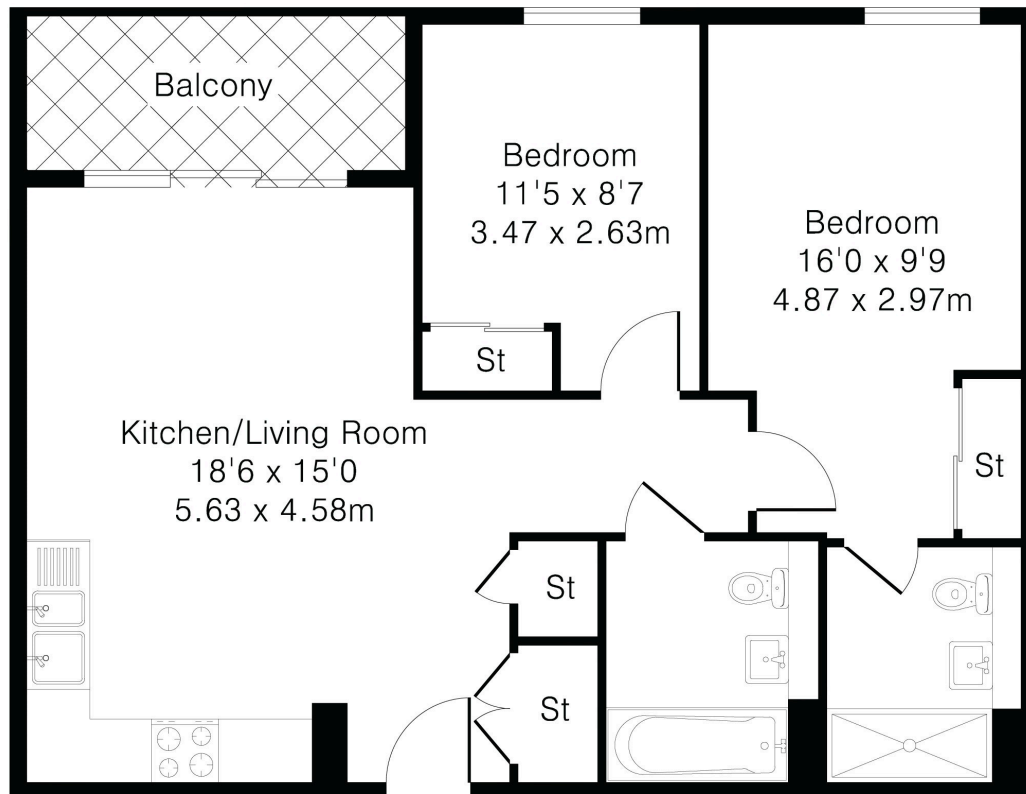
Electricity supply: Mains

Gas supply: Communal

Broadband/Mobile Info: Connections available. For an indication of specific speeds and supply of Broadband and Mobile, we advise applicants go to the Ofcom website 'Broadband and Mobile Coverage Checker'.



Approximate Gross Internal Area 665 sq ft – 62 sq m



Basement Floor