

Property ref: 40148

Caversham Wharf, Reading, RG1 8DS

£2,300 PCM**HASLAM'S**
Lettings

A modern and spacious first floor apartment, within easy reach of Reading and Caversham centres and with excellent views of the River Thames.

Council tax band F.

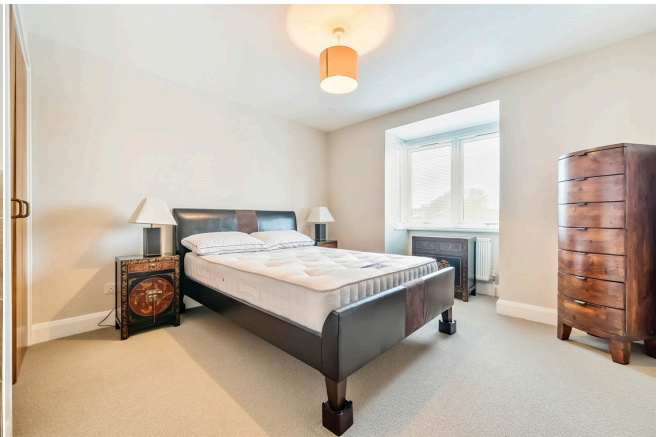
Available Now

- Lounge/dining room with a door opening to balcony overlooking River Thames
- Fitted kitchen including appliances
- Master bedroom with fitted wardrobe and en-suite shower room
- Further double bedroom with built-in wardrobe plus a spacious third bedroom
- Communal gardens; Off road parking with a garage; EPC rating C
- Furnished; Managed by LANDLORD

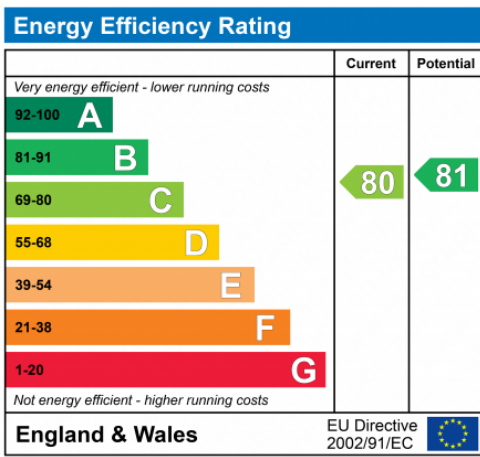
*Fees For Assured Shorthold Tenancies: when you rent a property from us you will be required to pay a sum equivalent to one weeks' rent for a holding deposit. Upon successful application, this amount will be off set against your first months' rent. You will also be required to pay a security deposit equivalent to 5 weeks' rent which will be held and protected in line with Deposit legislation. For more information about our fees please visit: www.haslams.net

Fees for all other tenancies (Non Housing Act Tenancies / Company Lets): when you rent a property from us we will charge you a one-off fee per property. This charge is the equivalent of 15 days of the monthly rental charge (+VAT) with a minimum fee of £450 (inc.VAT) up to a maximum of £650 (inc.VAT). Other fees may apply depending on your circumstances.

0118 960 1055**lettings@haslams.net www.haslams.net****Haslams Estate Agents Ltd, 159 Friar Street, Reading, Berkshire, RG1 1HE**



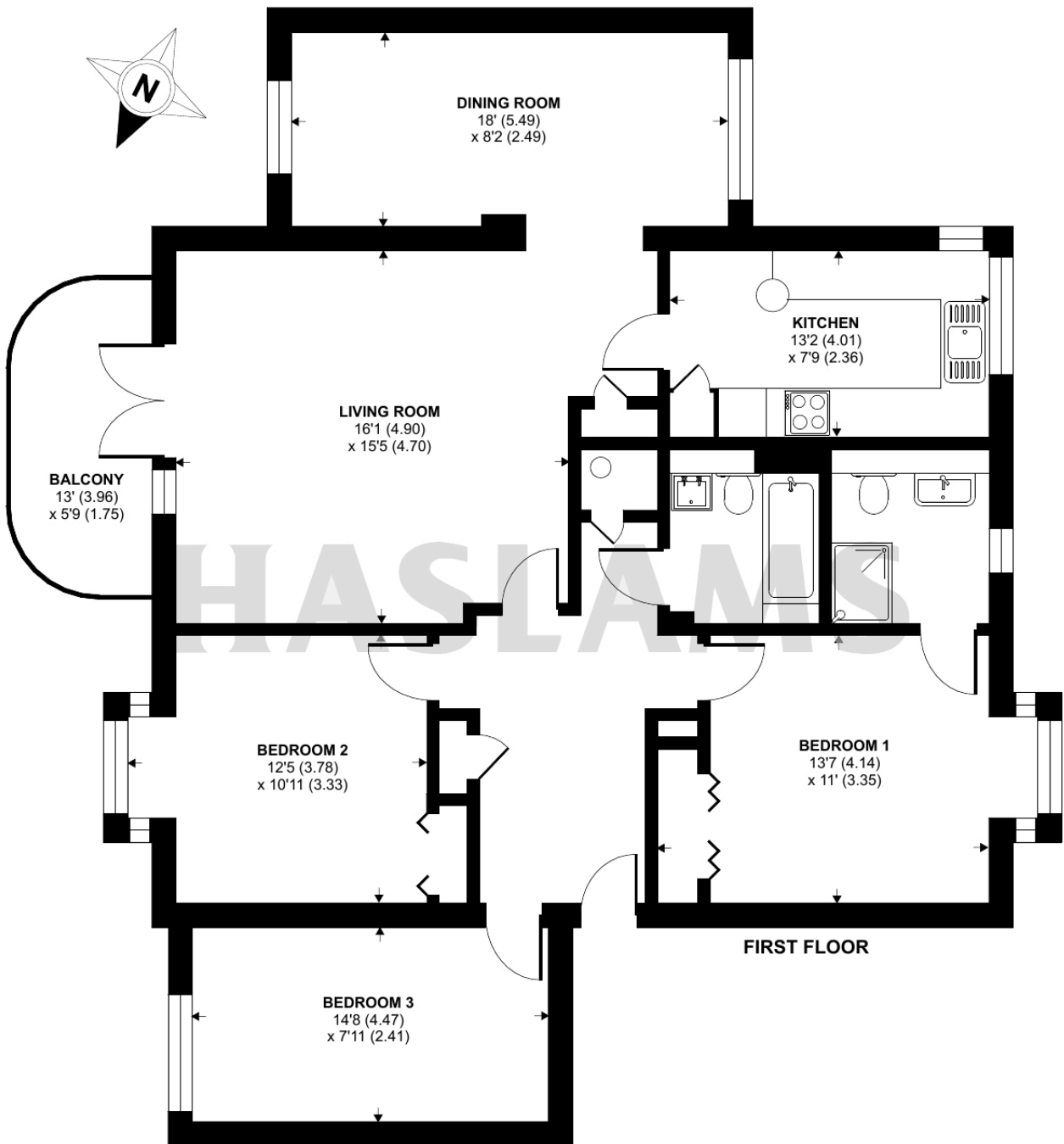
EPC



Caversham Wharf, Waterman Place, Reading, RG1

Approximate Area = 1209 sq ft / 112.3 sq m

For identification only - Not to scale



Floor plan produced in accordance with RICS Property Measurement Standards incorporating International Property Measurement Standards (IPMS2 Residential). © n|checom 2024. Produced for Haslamss. REF: 1108945