

Property ref: 161144

Greengates, Lundy Lane, Reading, RG30 2RX

£1,500 PCM

HASLAM'S
Lettings



Tucked away in a quiet backwater to the west of Reading is this purpose built development which is ideally situated for the town centre and within easy reach of Reading West station and local bus routes. Enjoying a top floor position, the apartment features two bedrooms and an open plan contemporary styled living room with fitted kitchen area while outside there are lawned communal gardens and residents parking. Council tax band C.

Available Now

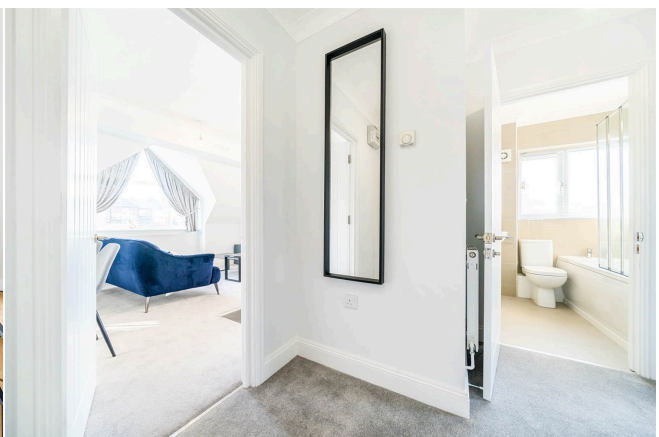
- Two double bedrooms; Open plan living room
- Well fitted kitchen area with oven and hob
- Modern fitted bathroom with shower
- Allocated parking; Communal residents garden
- EPC rating C; Gas heating
- Furnished; Managed by HASLAM'S

*Fees For Assured Shorthold Tenancies: when you rent a property from us you will be required to pay a sum equivalent to one weeks' rent for a holding deposit. Upon successful application, this amount will be off set against your first months' rent. You will also be required to pay a security deposit equivalent to 5 weeks' rent which will be held and protected in line with Deposit legislation. For more information about our fees please visit: www.haslams.net
Fees for all other tenancies (Non Housing Act Tenancies / Company Lets): when you rent a property from us we will charge you a one-off fee per property. This charge is the equivalent of 15 days of the monthly rental charge (+VAT) with a minimum fee of £450 (inc.VAT) up to a maximum of £650 (inc.VAT). Other fees may apply depending on your circumstances.

0118 960 1055

lettings@haslams.net www.haslams.net

Haslams Estate Agents Ltd, 159 Friar Street, Reading, Berkshire, RG1 1HE



Lundy Lane, Reading, RG30

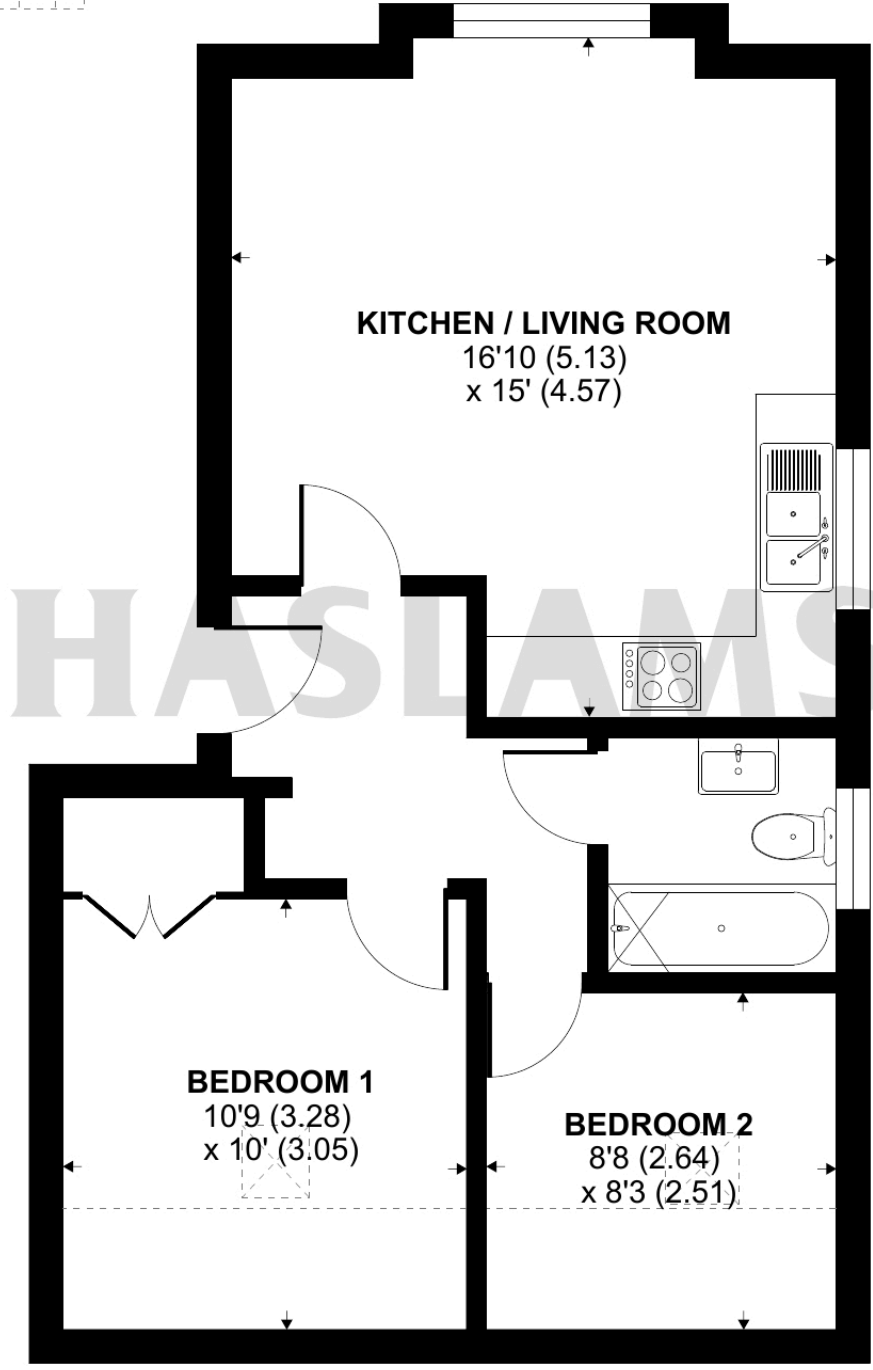
Approximate Area = 469 sq ft / 43.5 sq m

Limited Use Area(s) = 58 sq ft / 5.3 sq m

Total = 527 sq ft / 48.8 sq m

For identification only - Not to scale

Denotes restricted head height



SECOND FLOOR



Floor plan produced in accordance with RICS Property Measurement Standards incorporating International Property Measurement Standards (IPMS2 Residential). © n/checom 2024. Produced for Haslamss. REF: 1105004