



## Syan Summerhedge Rd, TA7 0JD £1,495 Per month

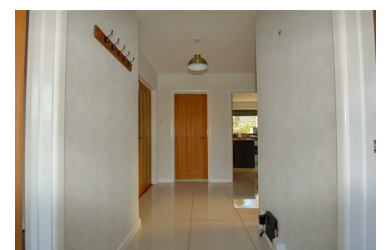


\*\*\*AVAILABLE EARLY AUGUST\*\*\*

Presenting this high spec, three bedroom, detached bungalow set in a popular village location!

Briefly the property comprises a hall with boiler cupboard. A spacious living room/diner with double doors, large window overlooking the rear garden, dining area lighting and a chimney breast with electric fireplace. The modern kitchen/diner hosts ample worktop & unit space, a breakfast bar area, washing machine, fridge-freezer, dishwasher, oven, hob and cooker hood. There's a rear door from the kitchen into the garden also. The family bathroom comprises a toilet, basin with vanity storage and "P" Shaped bath with rainfall shower head. The master bedroom is double in size and overlooks the front. The second bedroom is another double sized room overlooking the front, with wardrobe storage also. The third bedroom is a good

- Detached bungalow with modern finish!
- Semi-rural setting!
- Living room & kitchen/diner!
- Enclosed gardens!
- Double glazing!
- Three bedrooms!
- Spacious accommodation!
- Garage & ample parking!
- Oil central heating!



4 Moravia Close, Somerset, TA6 3SN

Tel: 01278 554333 Email: [corbett@sykesmoore.co.uk](mailto:corbett@sykesmoore.co.uk) <http://www.sykesmoore.co.uk/>