



4 Severn Close, Bridgwater, TA6 4EX £995 Per month



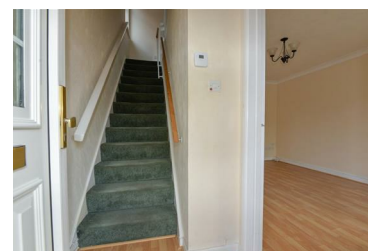
AVAILABLE IMMEDIATELY!

Presenting this two bedroom, semi-detached house set in a popular location!

Briefly, the property comprises an entrance hallway leading into the well proportioned living room with under-stairs storage. A kitchen with dining area, offering worktop & unit space, space for appliances, space for a cooker and French doors leading into the conservatory. The conservatory is a good size with electric heating and Patio doors onto the rear garden.

Stairs lead up to a landing with airing cupboard. A master bedroom with two built in wardrobes, overlooking the front. A second bedroom with built in

- Semi-detached house!
- Living room, kitchen/diner & conservatory!
- Popular location!
- Front & rear gardens!
- Double glazing!
- Two bedrooms!
- Modern shower room!
- Drive & gated car port!
- Gas central heating!



4 Moravia Close, Somerset, TA6 3SN

Tel: 01278 554333 Email: corbett@sykesmoore.co.uk <http://www.sykesmoore.co.uk/>