



8 Emerald Way, Bridgwater, TA6 4GY

£1,395 Per month

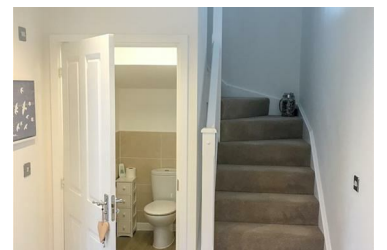


AVAILABLE MID JULY

Presenting this executive, well specified, detached, three bedroom, family home on the popular Kings Down development.

The property comprises an entrance hallway with storage cupboard & WC. Modern kitchen / diner with ample worktop space and integrated dishwasher, gas hob, electric oven & cooker hood. Generously sized living room with French doors leading out onto the rear garden. Stairs & landing. Master double bedroom with modern, en-suite shower room boasting a heated towel rail. The second bedroom is double in size also. The third bedroom is a well proportioned single bedroom. A modern family bathroom made up of toilet, basin and bath with upgraded overhead shower and a heated towel rail.

- Detached, family home!
- Modern property!
- Enclosed garden!
- Double glazing!
- EPC B!
- Three bedrooms!
- Two reception rooms!
- Garage & driveway!
- Gas central heating!



4 Moravia Close, Somerset, TA6 3SN

Tel: 01278 554333 Email: corbett@sykesmoore.co.uk <http://www.sykesmoore.co.uk/>