



## 24 Estuary Park, Bridgwater, TA5 2QP £1,350 Per month

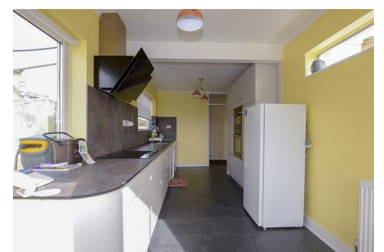


\*\*\*AVAILABLE MID-JUNE\*\*\*

Presenting this part-furnished, three bedroom, semi-detached bungalow with a great outlook!

The property offers a hall with airing cupboard and under-stairs storage. Modern kitchen/diner with 1 & 1/2 sink, washing machine, tumble dryer, hob, double oven, dishwasher, fridge, freezer & another fridge-freezer! The kitchen/diner is triple aspect with French doors out onto the decking. A living room opening up into the conservatory giving a great space and overlooks the rear garden & scenery with patio doors leading out onto the decking also. A downstairs shower room with toilet, basin, shower cubicle and towel radiator. A generously sized bedroom (or another reception room) overlooking the front garden. A well proportioned study with stairs leading up to the first floor. The first floors hosts a WC and two double bedrooms. The master

- Semi-detached bungalow!
- Three double bedrooms!
- Part-furnished!
- Front & rear gardens!
- Oil central heating!
- Great outlook & views!
- Three generously sized reception rooms!
- Close to HPC!
- Garage & parking!
- Double glazing throughout!



4 Moravia Close, Somerset, TA6 3SN

Tel: 01278 554333 Email: [corbett@sykesmoore.co.uk](mailto:corbett@sykesmoore.co.uk) <http://www.sykesmoore.co.uk/>