



SYKES-MOORE  
estate agents

Burnham Road, Highbridge  
£299,950



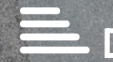
3



2



2



D



- Detached bungalow!
- Sold with no onward chain!
- In need of some updating!
- Three bedrooms!
- Generously sized plot!
- Extended living room/diner!
- En-suite to master bedroom!
- Garage!
- Gas central heating!
- Double glazing!

**Hall**

**Living Room / Diner**  
17'4" x 19'1" (max) (5.30m x 5.83m (max))

**Conservatory**  
8'0" x 12'2" (2.44m x 3.72m)

**Kitchen**  
12'5" x 10'3" (max) (3.81m x 3.14m (max))

**Lean-To (Utility)**  
3'10" x 7'4" (1.18m x 2.25m)

**Bedroom 1**  
12'2" x 10'11" (3.72m x 3.34m)

**En-Suite**  
5'7" x 10'11" (1.71m x 3.33m)

**Bedroom 2**  
13'9" x 9'8" (4.20m x 2.96m)

**Bedroom 3**  
8'7" x 7'11" (2.63m x 2.42m)

**Bathroom**  
5'5" x 6'2" (1.66m x 1.90m)

**Garage**  
13'6" x 24'0" (4.13m x 7.33m)







Presenting this detached bungalow, set on a good sized plot, in need of some updating!

Briefly the property comprises a hall with ample storage. An extended living room/diner giving ample entertaining space. Patio doors lead into the conservatory which has French doors leading onto the rear garden. An "L" shaped kitchen hosting a good amount of worktop & unit space. A lean-to/utility room with rear door. The master bedroom is a good sized double with an en-suite shower room hosting a toilet, basin, storage and shower. A second double bedroom with built in storage. A third, well proportioned bedroom with storage. And a family bathroom with toilet, basin, storage and bath with shower over.

The plot itself is gated and fully enclosed. The front garden hosts lawn, path to the front door and borders with plants. The rear garden is a great size and wraps around the property hosting lawn, concrete and borders. There is a shed to the side of the property and a spacious garage with power, light and electric door.

The property benefits from gas central heating and double glazing throughout.

PLEASE NOTE: this property is built with a steel frame (non-standard construction).

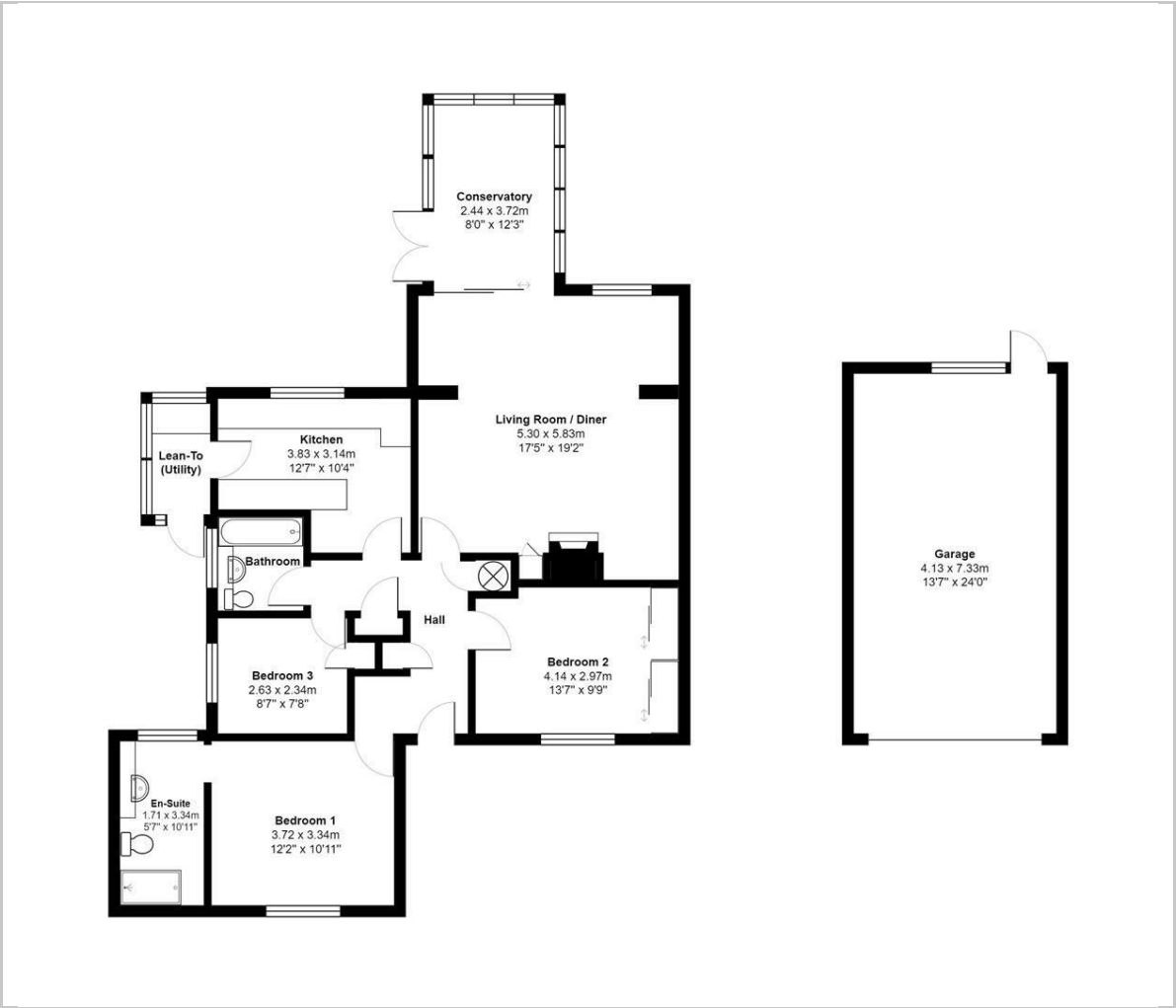
Burnham Road is found in the heart of Highbridge. The property is walking distance away from shops, restaurants, schools and all sorts of local amenities. The M5 is only a quick drive from the property, which links to Exeter, Bristol & beyond.

Tenure: Freehold  
EPC: D  
Council tax band: D





Floor Plan



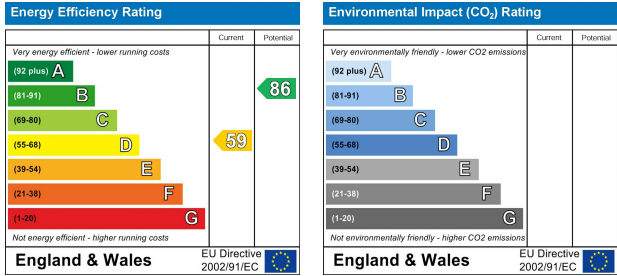
Viewing

Please contact our Sales Office on 01278 554333 if you wish to arrange a viewing appointment for this property or require further information.

Area Map



Energy Efficiency Graph



These particulars, whilst believed to be accurate are set out as a general outline only for guidance and do not constitute any part of an offer or contract. Intending purchasers should not rely on them as statements of representation of fact, but must satisfy themselves by inspection or otherwise as to their accuracy. No person in this firms employment has the authority to make or give any representation or warranty in respect of the property.

Suite 1A, Wellworthys Business Centre Parrett Way, Bridgwater, Somerset, TA6 5LB  
Tel: 01278 554333 Email: corbett@sykesmoore.co.uk <http://www.sykesmoore.co.uk/>