



Windmill Hill, North Curry  
£440,000



- Detached, character home!
- Four bedrooms!
- Three reception rooms!
- Modern kitchen!
- New double glazing!
- New boiler!
- Ground floor bedroom & en-suite!
- Low maintenance rear garden!
- Driveway for multiple cars!
- Popular location!

#### Porch

#### Hall

#### Living Room

16'3" x 12'4" (4.97m x 3.78m)

#### Dining Room

10'8" x 12'10" (3.27m x 3.92m)

#### Kitchen

13'1" (max) x 14'11" (max) (4.01m (max) x 4.55m (max))

#### Garden Room

9'7" x 12'3" (2.94m x 3.74m)

#### WC

#### Store Room

5'1" x 3'10" (min) (1.55m x 1.17m (min))

#### Utility

7'5" x 7'10" (max) (2.27m x 2.40m (max))

#### Bedroom 1

10'5" x 12'5" (3.19m x 3.81m)

#### En-Suite

#### Stairs & Landing

#### Bedroom 2

10'2" x 16'4" (3.11m x 5.00m)

#### Bedroom 3

12'2" (max) x 14'2" (max) (3.73m (max) x 4.32m (max))

#### Bedroom 4

11'6" x 9'1" (3.53m x 2.79m)

#### Shower Room





Presenting this four bedroom, detached cottage which boasts a great blend of character, modern upgrades and a popular location!

The ground floor of the property comprises a porch, leading into the hall with built in storage. A generously sized living room with inglenook fireplace, dual windows and character beams. A well proportioned dining room with dual aspect light and wood burner in an inglenook fireplace also. A modern kitchen with dual aspect light, spotlights, ample worktop & unit space, electric hob, electric oven, cooker hood, fridge-freezer, 1 & 1/2 sink and space for a small dining table & chairs. The garden room hosts a tiled floor, ample light from triple aspect windows and French doors leading onto the garden. A WC with toilet, basin and boiler. A store room leading into the utility which hosts worktop space, space for appliances, shelving & sink. The master bedroom, found on the ground floor, is a good size double with built in storage and dual aspect windows. The en-suite hosts a basin with vanity storage, toilet, towel radiator and large shower cubicle.

The first floor offers three further bedrooms with character beams and a shower room. The landing hosts two skylights and an airing cupboard. Bedroom two is a good size double with dual aspect light and built in storage. The third bedroom is another generous double with dual aspect light and built in storage. The fourth bedroom is a smaller double with storage also. The shower room hosts a toilet, basin, storage cabinets and shower cubicle with modern tiling.

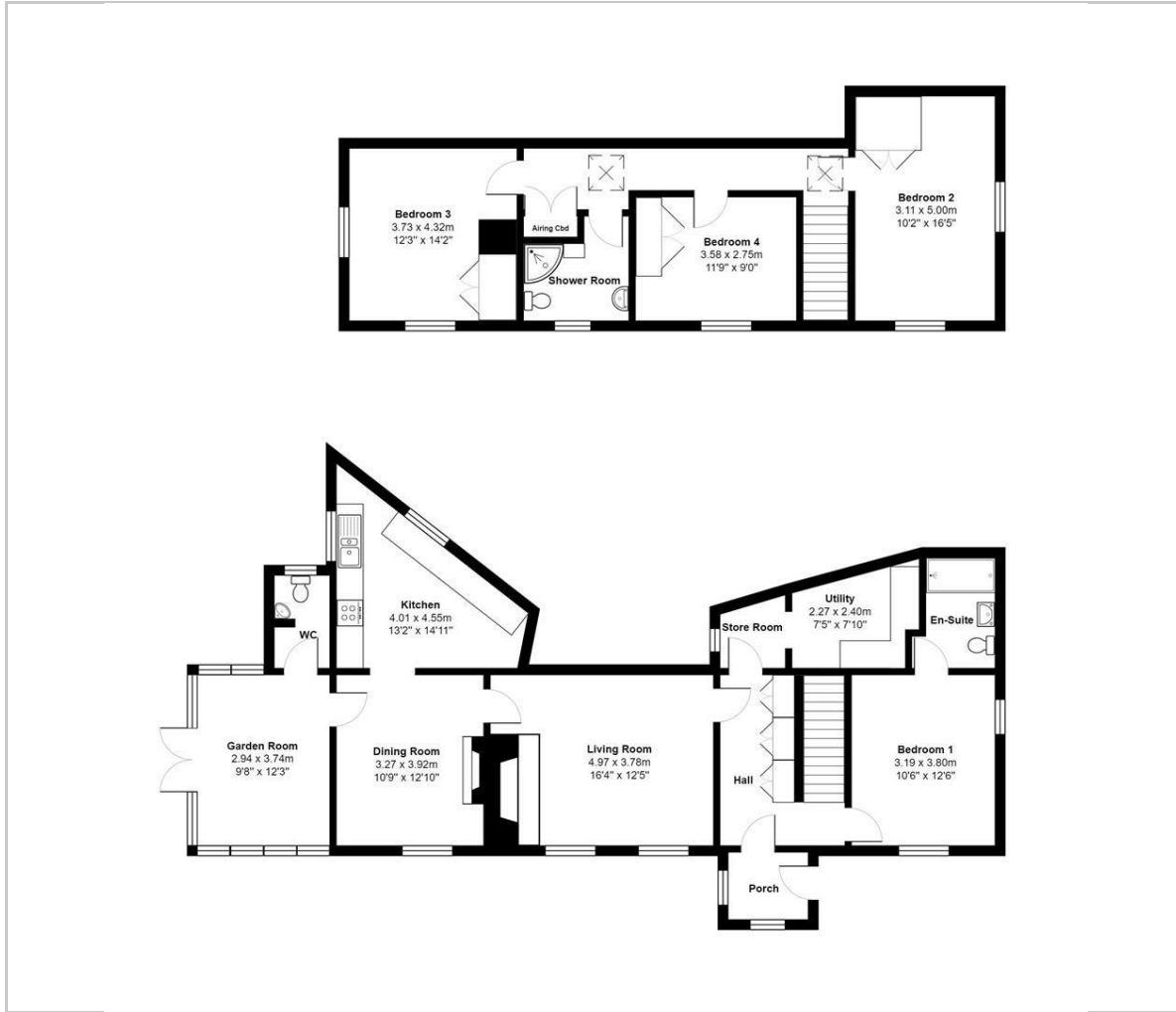
The garden is low maintenance, being mainly patio with some hedging to the front and benefitting from side access. There is a gravelled driveway for multiple vehicles and a shed.

The property is set in North Curry, a traditional Somerset Village hosting a primary school, church, pub & village hall whilst only being a few minutes away from the M5 and Taunton.

Tenure: Freehold  
EPC: E  
Council tax band: E



## Floor Plan



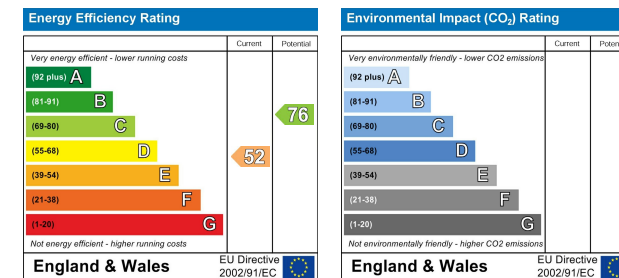
## Viewing

Please contact our Sales Office on 01278 554333 if you wish to arrange a viewing appointment for this property or require further information.

## Area Map



## Energy Efficiency Graph



These particulars, whilst believed to be accurate are set out as a general outline only for guidance and do not constitute any part of an offer or contract. Intending purchasers should not rely on them as statements of representation of fact, but must satisfy themselves by inspection or otherwise as to their accuracy. No person in this firm's employment has the authority to make or give any representation or warranty in respect of the property.

4 Moravia Close, Somerset, TA6 3SN

Tel: 01278 554333 Email: corbett@sykesmoore.co.uk <http://www.sykesmoore.co.uk/>