

68 KD Tower Cotterells , Hemel Hempstead, HP1 1AS

Welcome to this charming flat located in the heart of Cotterells, Hemel Hempstead.

This property boasts in excess of 800sq ft of living space, featuring 1 reception room, 2 double bedrooms, and two bathrooms.

One of the highlights of this flat is the stunning panoramic views it offers from the 8th floor allowing you to enjoy the beauty of the surrounding area right from the comfort of your own home. The balcony provides the perfect spot to relax and unwind while taking in the picturesque scenery.

Safety is paramount, and this property comes with high-level security measures in place, ensuring peace of mind for you and your loved ones. A concierge is available six days a week to take in packages for you too! Additionally, the convenience of being in close proximity to the train station means easy access to transportation, with just a 25-minute journey into Euston.

Don't miss out on the opportunity to make this flat your new home. Contact us today to arrange a viewing and experience the charm and comfort this property has to offer.

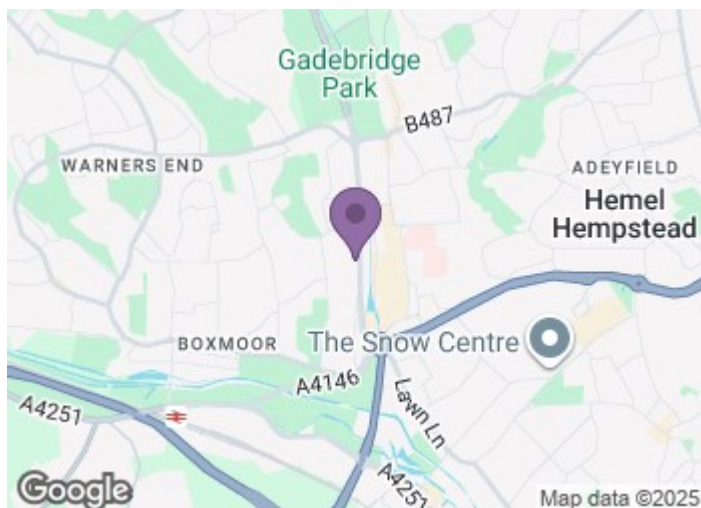
Guide price £250,000

68 KD Tower Cotterells

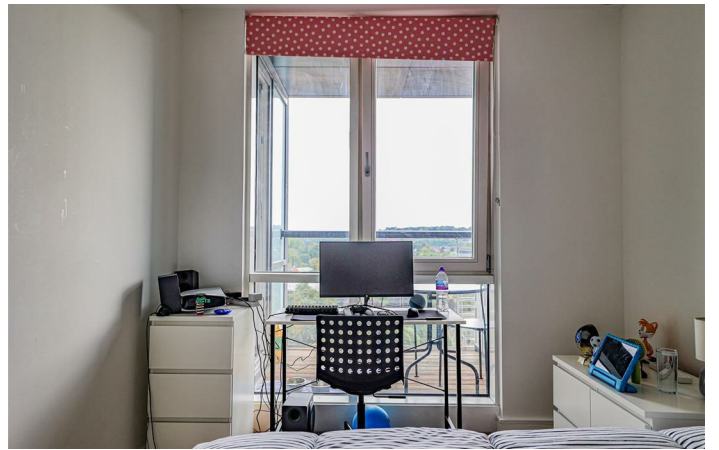
, Hemel Hempstead, HP1 1AS



- 8TH FLOOR APARTMENT
- CONSIERGE
- TWO BED TWO BATH
- LIFT ACCESS
- STUNNING VIEWS
- PRIVATE BALCONY
- HIGHLY SECURE BUILDING
- NO UPPER CHAIN



[Directions](#)





Floor Plan

These particulars, whilst believed to be accurate are set out as a general outline only for guidance and do not constitute any part of an offer or contract. Intending purchasers should not rely on them as statements of representation of fact, but must satisfy themselves by inspection or otherwise as to their accuracy. No person in this firms employment has the authority to make or give any representation or warranty in respect of the property.

