

Mulburries

Haddon Close , Hemel Hempstead, HP3 8NE

Offers in excess of £380,000





## Haddon Close, Hemel Hempstead, HP3 8NE

- Quiet Cul De Sac
- Leverstock Green Location
- Council Tax Band - D
- Garage
- Ground Floor W.C
- Sizable Bedrooms
- EPC Rating - C

Welcome to this charming terraced house located on Haddon Close in the lovely area of Leverstock Green, Hemel Hempstead. This property boasts a spacious 952 sq ft of living space, perfect for a family looking for a new home.

As you step inside, you'll be greeted by a cosy reception room, ideal for relaxing with family or entertaining guests. The property features three sizable bedrooms, each equipped with built-in storage, offering plenty of space for all







your belongings.

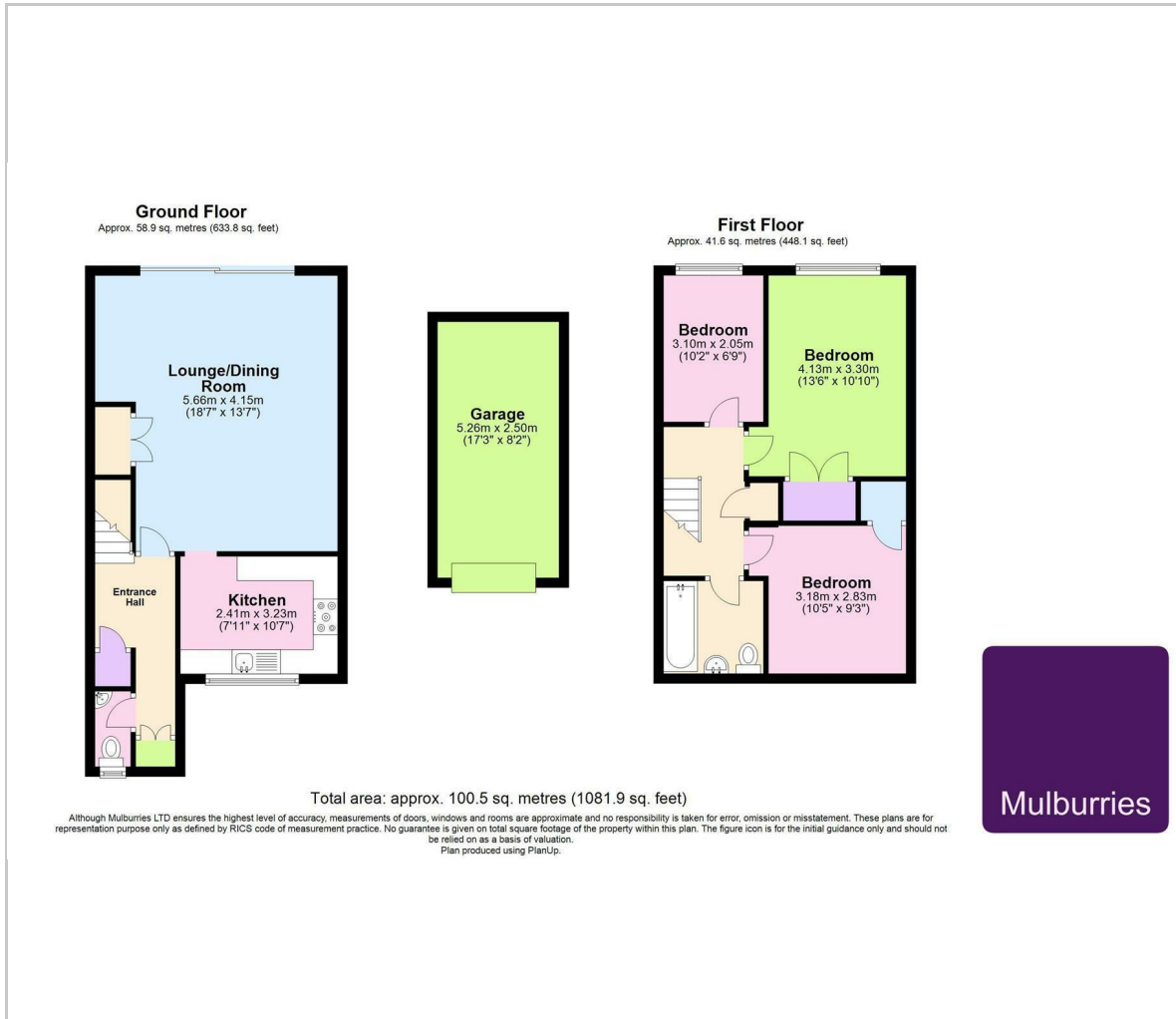
One of the highlights of this property is the separate garage within a block to the rear, providing convenient parking or extra storage space. Additionally, the ground floor benefits from a convenient w.c., adding to the practicality of the home.

Situated in a quiet cul-de-sac, this house offers a peaceful and safe environment for you and your loved ones. With parking available for one vehicle, you won't have to worry about finding a spot after a long day.

Don't miss the opportunity to make this house your new home. Contact us today to arrange a viewing and envision yourself living in this wonderful property in Leverstock Green.



## Floor Plan

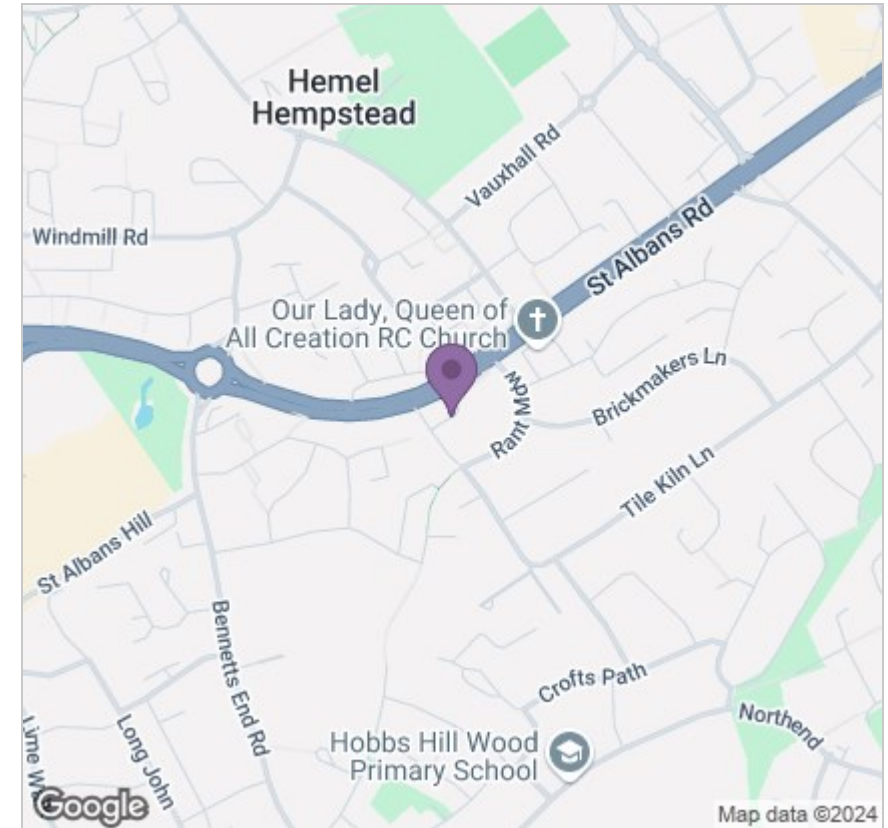


## Viewing

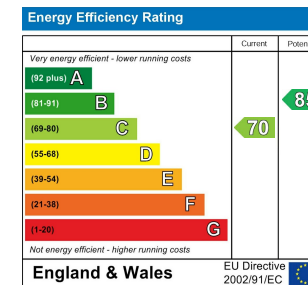
Please contact our Mulburries Office on 01442 732362 if you wish to arrange a viewing appointment for this property or require further information.

31 Lawn Lane, Hemel Hempstead, Hertfordshire, HP3 9HH  
Tel: 01442 732362 Email: [contact@mulburries.co.uk](mailto:contact@mulburries.co.uk) [ryan.green@mulburries.co.uk](mailto:ryan.green@mulburries.co.uk)

## Area Map



## Energy Efficiency Graph



These particulars, whilst believed to be accurate are set out as a general outline only for guidance and do not constitute any part of an offer or contract. Intending purchasers should not rely on them as statements of representation of fact, but must satisfy themselves by inspection or otherwise as to their accuracy. No person in this firm's employment has the authority to make or give any representation or warranty in respect of the property.