



67 KD Tower, Cotterells , Hemel Hempstead, HP1 1AS

Mulburries are excited to welcome this beautiful, CHAIN FREE, apartment in the distinguished KD tower onto the market.

The 8th floor property, which has stunning unobstructed views and is accessible via a lift, also comes with a concierge service within the building and has a two tiered security entry system too the building.

Comprising of entrance hallway; on the left a storage cupboard, three piece family bathroom, open planned kitchen/dining room with base and eye level units and integrated appliances. There is two double bedrooms, the principal and bigger of them also having an en suite shower room.

The development is situated just 800 metres from Hemel Hempstead station which has trains running back into London Euston three times an hour inside 30 minutes.

Lease Remaining. 236 Years.

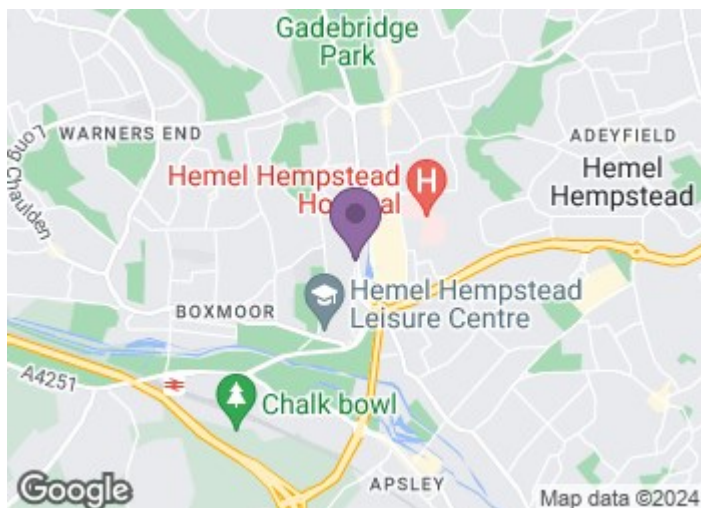
Guide price £225,000

67 KD Tower, Cotterells

, Hemel Hempstead, HP1 1AS



- 2 double bedrooms
- Long lease - 236 years
- Sought-after KD Tower
- Chain-free
- Open plan living



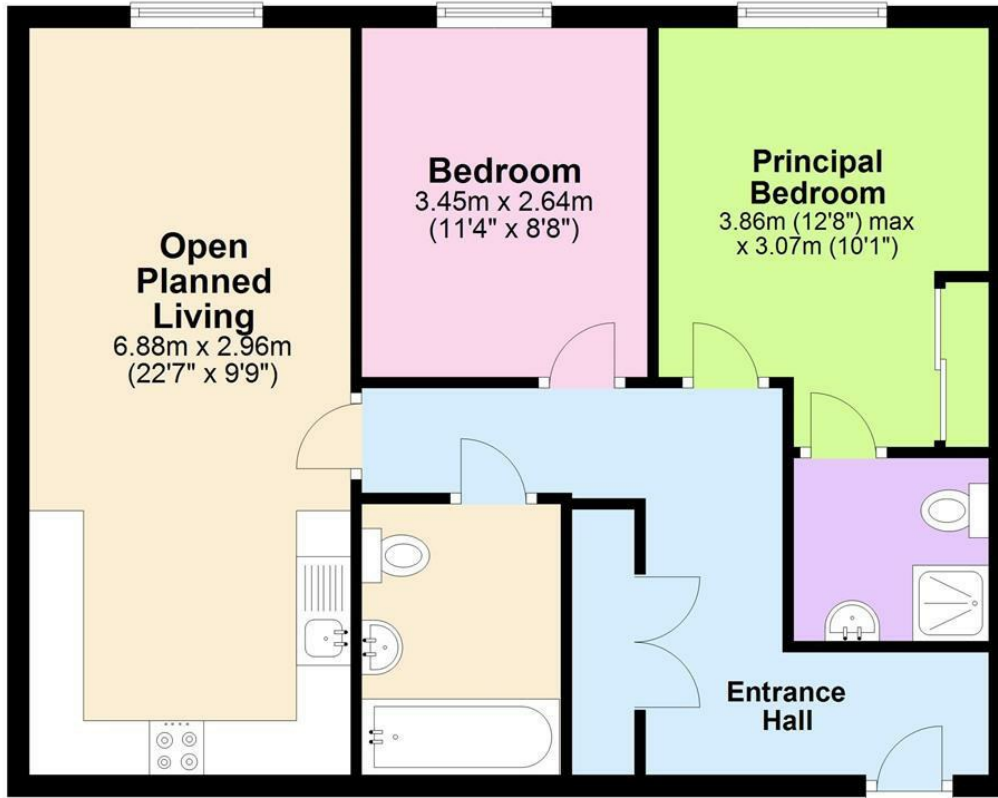
[Directions](#)



Floor Plan

Ground Floor

Approx. 49.2 sq. metres (529.1 sq. feet)



Total area: approx. 49.2 sq. metres (529.1 sq. feet)

Although Mulburries LTD ensures the highest level of accuracy, measurements of doors, windows and rooms are approximate and no responsibility is taken for error, omission or misstatement. These plans are for representation purpose only as defined by RICS code of measurement practice. No guarantee is given on total square footage of the property within this plan. The figure icon is for the initial guidance only and should not be relied on as a basis of valuation.

Plan produced using PlanUp.



These particulars, whilst believed to be accurate are set out as a general outline only for guidance and do not constitute any part of an offer or contract. Intending purchasers should not rely on them as statements of representation of fact, but must satisfy themselves by inspection or otherwise as to their accuracy. No person in this firm's employment has the authority to make or give any representation or warranty in respect of the property.

