



BB1 3LY

Brantwood Avenue, Blackburn Offers In The Region Of £184,950

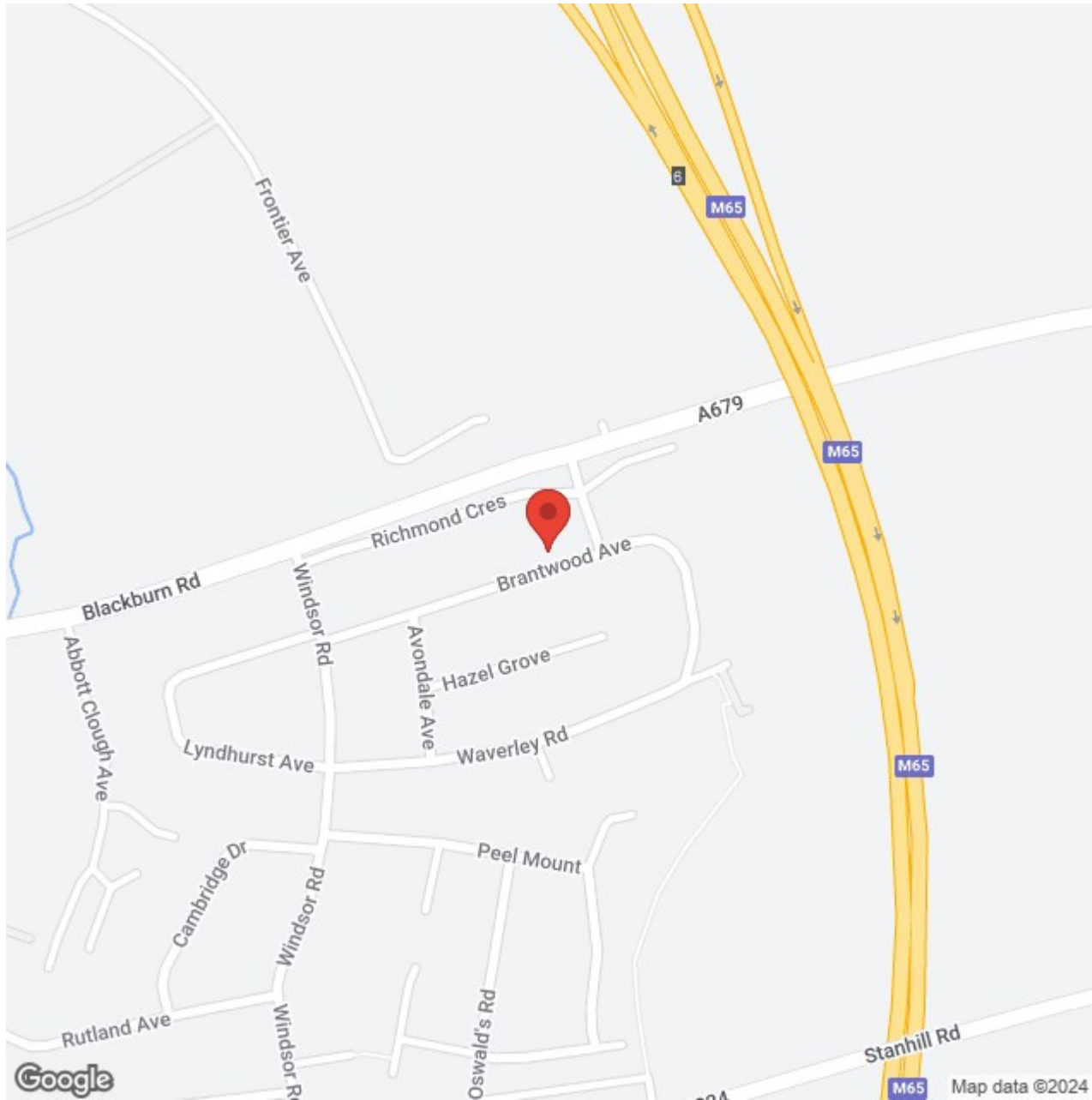
Welcome to Brantwood Avenue, Blackburn - a charming semi-detached house that is sure to capture your heart! This delightful property boasts three cosy bedrooms, perfect for a growing family or those in need of extra space. The house features a well-appointed bathroom, ensuring convenience for all residents. As you step inside, you'll be greeted by a warm and inviting reception room, ideal for relaxing with loved ones or entertaining guests. The fitted kitchen is a chef's dream, offering ample space to whip up delicious meals for family and friends. One of the highlights of this property is the stunning garden, providing a tranquil oasis where you can unwind after a long day. Imagine enjoying a cup of tea or hosting a summer barbecue in this picturesque outdoor space. Located in an ideal location, this house offers easy access to local amenities, schools, and transport links, making it a convenient choice for daily living. Whether you're looking for a peaceful retreat or a place to create lasting memories, this semi-detached house on Brantwood Avenue is the perfect place to call home.

Hilton &
Horsfall

RIBBLE VALLEY
20 WELLGATE
CLITHEROE
LANCASHIRE. BB7 2DP
T: 01200 435667

BURNLEY & PENDLE
75 GISBURN ROAD
BARROWFORD
LANCASHIRE. BB9 6DX
T: 01282 560024







BB1 3LY

Lancashire

Welcome to Brantwood Avenue, Blackburn - a charming semi-detached house that is sure to capture your heart! This delightful property boasts three cosy bedrooms, perfect for a growing family or those in need of extra space. The house features a well-appointed bathroom, ensuring convenience for all residents. As you step inside, you'll be greeted by a warm and inviting reception room, ideal for relaxing with loved ones or entertaining guests. The fitted kitchen is a chef's dream, offering ample space to whip up delicious meals for family and friends. One of the highlights of this property is the stunning garden, providing a tranquil oasis where you can unwind after a long day. Imagine enjoying a cup of tea or hosting a summer barbecue in this picturesque outdoor space. Located in an ideal location, this house offers easy access to local amenities, schools, and transport links, making it a convenient choice for daily living. Whether you're looking for a peaceful retreat or a place to create lasting memories, this semi-detached house on Brantwood Avenue is the perfect place to call home.

GROUND FLOOR

On the ground floor you will find:

SITTING / DINING ROOM 13'2" x 10'8" (4.03 x 3.26)

A family sized living room wood effect flooring, space for table and chairs, television point, electric wood burner, ceiling coving and uPVC bay fronted window.

KITCHEN 10'0" x 8'5" (3.05m x 2.57m)

Offering a range of fitted wall and base units with contrasting work surfaces over, tiled splash back, inset sink with chrome mixer tap, ceiling coving, karndean flooring, integrated Zanussi oven / grill, Zanussi microwave, fridge / freezer, 4 ring induction hob with chrome extractor hood, wall mounted modern radiator, plumbing for a washing machine and uPVC double glazed window to the side elevation.

SITTING ROOM / BEDROOM THREE 12'6" x 10'11" (3.83 x 3.34)

A family sized living room having ceiling coving, television point, space for settees, 1x central heating radiator and uPVC patio doors to the rear elevation.

BEDROOM TWO 8'4" x 9'8" (2.55m x 2.95m)

A well proportioned bedroom having space for wardrobes and drawers, television point, 1x central heating radiator and uPVC double glazed window to the rear elevation.

FIRST FLOOR / LANDING

On the first floor / landing you will find:

BEDROOM ONE 14'9" x 9'10" (4.52 x 3.02)

A bedroom of double proportions with 1x central heating radiator, television point, double doors to storage and uPVC double glazed window to the front elevation.

BATHROOM

A modern three piece bathroom suite

comprising of: tiled flooring and walls, panelled bathtub with rain fall shower head above and glass shower screen, ceiling coving, push button w.c, sink in vanity unit with chrome mixer tap, heated chrome towel rack and uPVC double glazed frosted window to the front and side elevation.

EXTERNALLY

360 DEGREE VIRTUAL TOUR

<https://bit.ly/brantwood-knuzden>

PROPERTY DETAILS

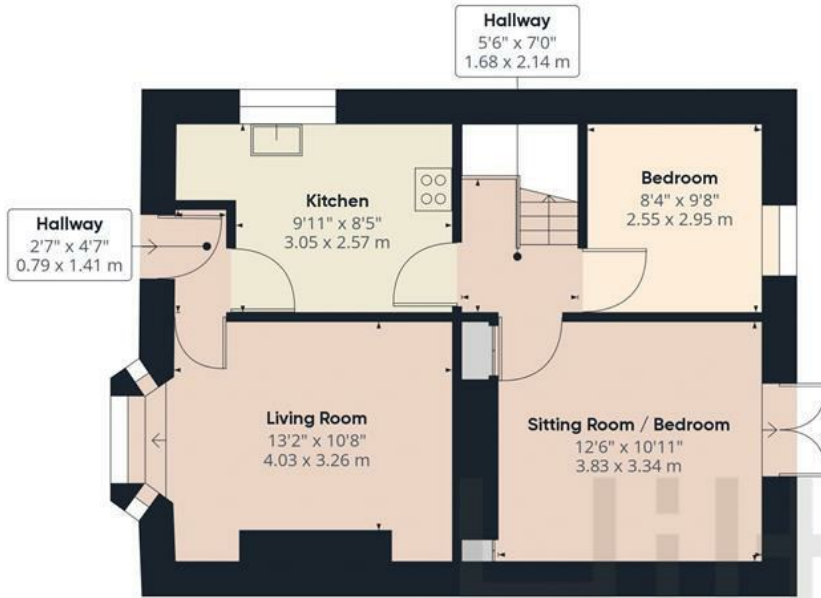
PUBLISHING



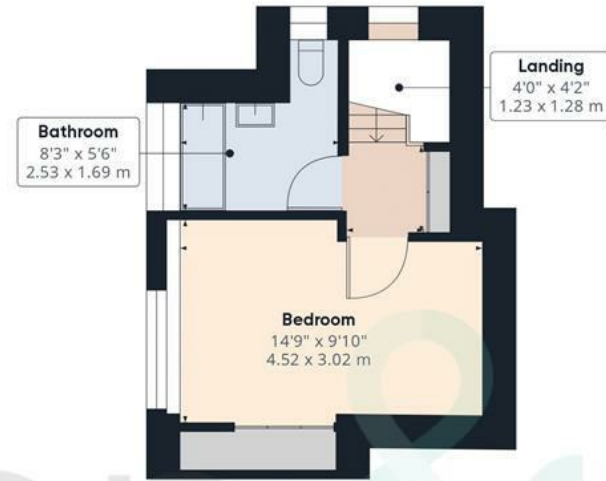


BB1 3LY

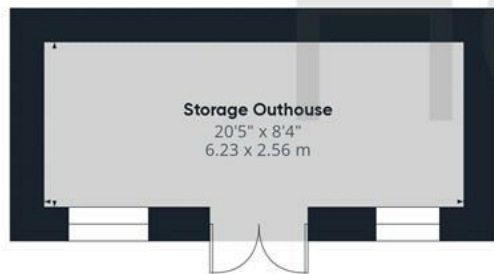
OUTSIDE



Ground Floor Building 1



Floor 1 Building 1



Ground Floor Building 2

Approximate total area⁽¹⁾
962.35 ft²
89.41 m²

(1) Excluding balconies and terraces

While every attempt has been made to ensure accuracy, all measurements are approximate, not to scale. This floor plan is for illustrative purposes only.





Hilton & Horsfall

75 Gisburn Road
Barrowford
Lancashire
BB9 6DX

[w. hilton-horsfall.co.uk](http://w.hilton-horsfall.co.uk)
[t. 01282 560024](tel:01282560024)

20 Wellgate
Clitheroe
Lancashire
BB7 2DP

[w. hilton-horsfall.co.uk](http://w.hilton-horsfall.co.uk)
[t. 01200 435667](tel:01200435667)