

Britannia House

Business Centre Offices Available

Caerphilly Business Park, CF83 3GG

Fully Refurbished and Available Immediately

Ground Floor - Suites A9 & B3

(from 180 sqft to 600 sqft)

First Floor - Suite G1 (400 sqft)

TO LET
LICENCES OR LEASES



- ✓ Top Quality Offices
- ✓ Generous Parking
- ✓ Access to Calon Coffee Shop and Cafe
- ✓ Access to Welsh Ice Reception
- ✓ New Carpets and LED Lights
- ✓ Access to Meeting Rooms
- ✓ Ultrafast Fibre Connectivity
- ✓ Competitive Rents



Suite B3 CGI



Calon on-site Cafe



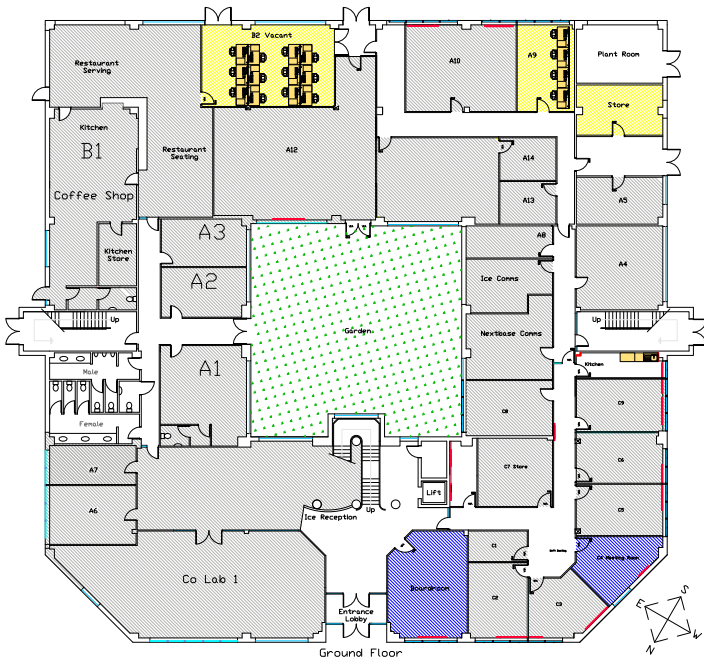
Suite D4



Calon on-site Cafe

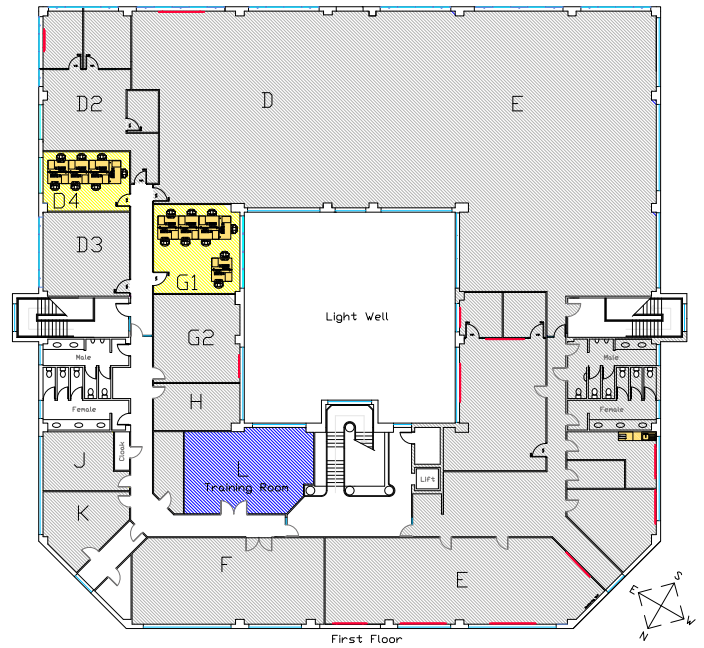
Ground Floor Availability

Ground Floor Plan



First Floor Availability

First Floor Plan



GROUND FLOOR

Suite A9 (4 Desks)

Suite B3 (12 Desks)

<https://tours.rendercube.co.uk/tours/V07jPCh0B>

IMMEDIATELY AVAILABLE

FIRST FLOOR

Suite D4 (7 Desks)

Suite G1 (9 Desks)

IMMEDIATELY AVAILABLE





Britannia House Surrounding Area

- ✓ Short walk to Caerphilly stations
- ✓ 3 motorway junctions with 10 miles/15 minutes
- ✓ 750,000 people within 30 minute drive-time
- ✓ Strategic location between Cardiff, Newport and the Valleys

“ Having viewed various spaces with Mike we were settled into our new office within two weeks.

Nothing has been too much trouble for Mike and his team, even pointing us in the right direction for IT support and office furniture.

First class service from start to finish. ”

*Paul Griffiths,
Bluewave Telecom*



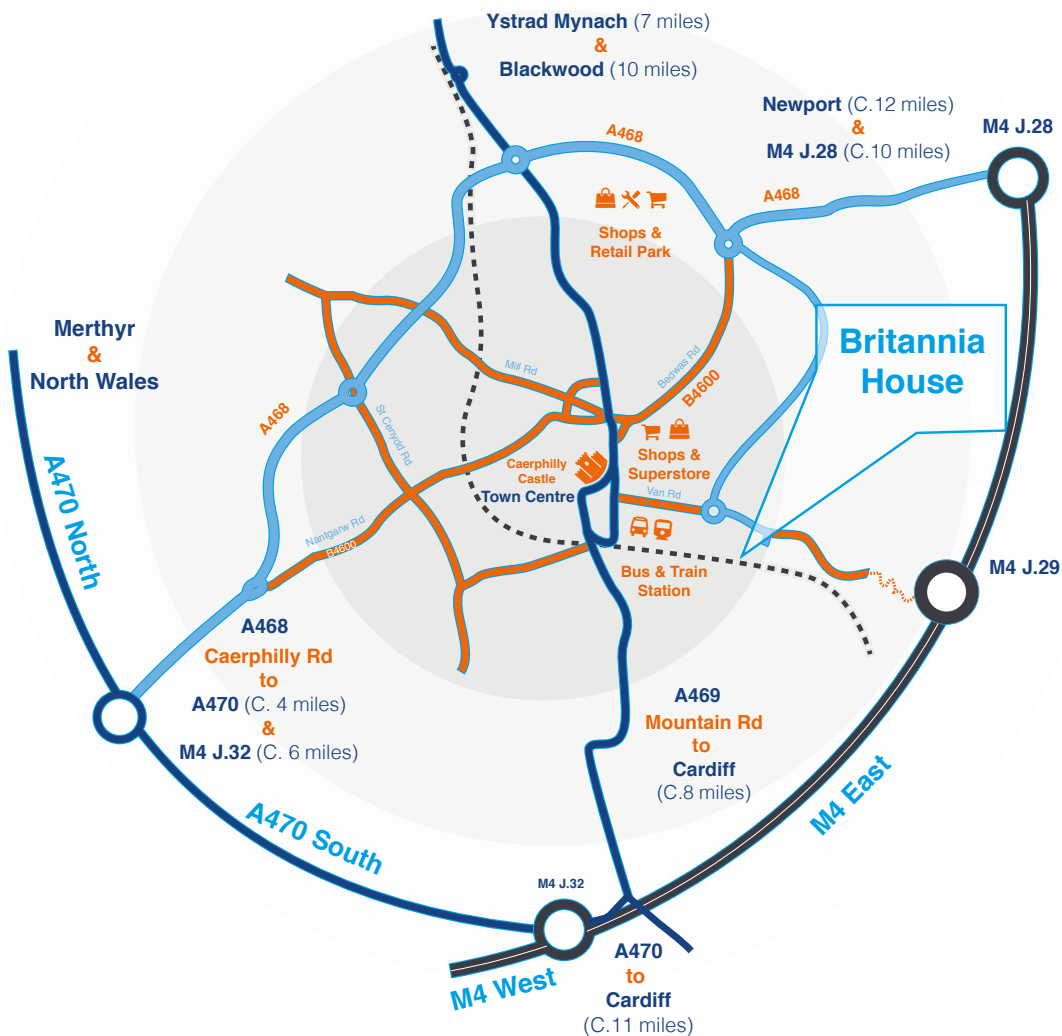
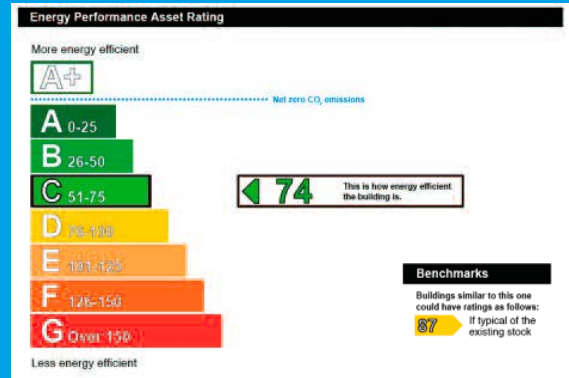
Connectivity

Britannia House has Ultrafast Connectivity with Fibre to the Premises (FTTP) already installed for those wishing to avoid Contention Issues, so a lease line is easily/quickly available – details and costs on request.

Lengthy delays of a new leased line are avoided with the service in place so large 'shared access' is readily available at competitive rates. The existing service has scope to cope with 1GB(Gig).

If a more standard connection is preferred, the adjacent BT cabinet has been recently upgraded to provide Superfast Broadband with Fibre Connectivity present (Fibre to the Cabinet/FTTC).

EPC



For further information, plans, images etc - please contact our agents.
Terms on application. Available as a whole or in part.



Gary Carver
gcarver@savills.com
Direct: +44 (0) 2920 368 963
Mobile: +44 (0) 7972 000 171



Daniel Jones
daniel.jones@brinsons.co.uk
Office: +44 (0) 2920 867 711
Direct: +44 (0) 2920 807 069
Mobile: +44 (0) 7943 060 580



Mike Wallace
MWallace@wcr-space.co.uk
Landlord