

DARLTON
FOUR
BEDROOM
HOME

BLOOR HOMES



A four bedroom detached home comprising a spacious lounge and fantastic open plan kitchen / dining / family area with separate utility room and French doors leading to the rear garden. Off the substantial hallway, you will also discover a separate study and cloakroom. Upstairs are four double bedrooms and the family bathroom, the master benefitting from a dressing area with fitted wardrobes and an en suite shower room.

DARLTON

AN IMPRESSIVE DETACHED
FOUR BEDROOM FAMILY HOME

**DARLTON
FOUR
BEDROOM
HOME**

FIRST FLOOR:

BEDROOM 1
3.34m x 3.00m
10'11" x 9'10"

EN SUITE

DRESSING

BEDROOM 2
2.98m x 3.27m
9'9" x 10'9"

EN SUITE

BEDROOM 3
2.98m x 3.04m
9'9" x 10'0"

BEDROOM 4
2.94m x 3.47m
9'8" x 11'5"

BATHROOM

GROUND FLOOR:

LOUNGE
3.65m x 5.45m
12'0" x 17'11"

**KITCHEN / DINING /
FAMILY**
8.89m x 4.23m
29'2" x 13'10"

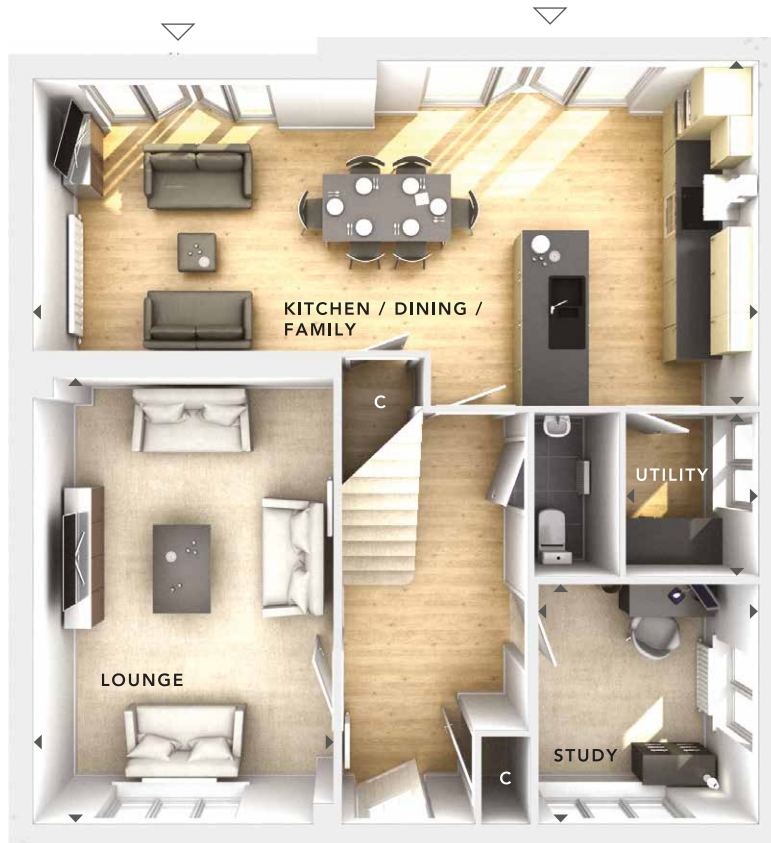
UTILITY
1.62m x 2.00m
5'4" x 6'7"

STUDY
2.67m x 2.90m
8'9" x 9'6"

CLOAKS



**FIRST
FLOOR**



**GROUND
FLOOR**

W	- Fitted Wardrobes
C	- Storage
△	- External Access
◀▶	- Measurement Points
© Bloor Homes • 483VH0021B 4.9	



These particulars are intended as a preliminary guide for prospective purchasers and should not be relied upon. The elevational treatment for individual house types shows a typical arrangement. Details of materials and design treatments may vary. Any artist impressions shown are not intended to represent any particular plot. Purchasers are advised to inspect the layout plan to establish the arrangement of the house and surrounding property. Internal layouts show a general arrangement which may vary from plot to plot. Room sizes given are approx. overall finished room sizes and subject to normal building tolerances (ie ± 75mm). In all instances purchasers are advised to inspect plot specific information available from our sales team. Nothing in these particulars or verbal assurance shall form or constitute part of any contract, and are given without any responsibility on behalf of Bloor Homes.