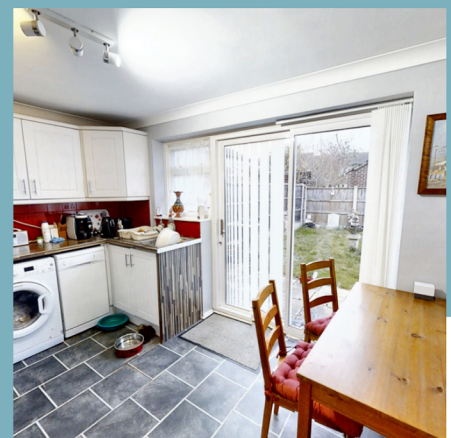


**Offers Over
£250,000**

OnPlan



FOR SALE

Presenting a practical and conveniently located two-bedroom end of terrace home nestled in the sought-after Eaglestone neighborhood on Golden Drive. This property offers a blend of functionality and comfort ideal for modern living.

OnPlan

Contact Us

01908 464776

charlie@onplan.co.uk

Upon entry, you're greeted by a functional entrance hall featuring storage space, providing a seamless transition into the spacious lounge area, perfect for relaxation or entertaining guests. The separate kitchen is well-equipped with ample counter space and storage, including white goods, making meal preparation effortless.

Features

- End of Terrace
- Garage
- Off Road Parking
- Rear Garden
- Two Double Rooms
- Central Location
- Close to Hospital and MK Central Station
- Great Transport Links



Step outside from the kitchen to discover the well-maintained rear garden, offering a tranquil setting for outdoor gatherings or simply enjoying the fresh air. Heading upstairs, you'll find two generously sized bedrooms flooded with natural light, providing peaceful retreats for residents. The family bathroom ensures convenience for all occupants.

In addition to its practical layout, this property boasts off-road parking and a single garage, offering secure parking and additional storage space, enhancing its appeal for residents.

Conveniently positioned in Eaglestone, residents benefit from easy access to local amenities, schools, and transport links, ensuring a convenient lifestyle. Moreover, Milton Keynes Hospital is within close proximity, providing peace of mind for medical professionals or families requiring medical services.

If you're seeking a well-appointed home in a convenient location, don't miss the opportunity to arrange a viewing of this charming property. Contact us today to discover if it's the perfect fit for your needs.

Contact Us

01908 464776

charlie@onplan.co.uk