



185 Alexandra Road  
PE1 3DL  
£325,000



# 185 Alexandra Road

PE1 3DL

In addition to this refurbished detached house, the property has also been granted permission for an erection of a two storey 2/3 bedroom dwelling with study more details are available, please contact us for further information.

Upon entering the main home, you'll find an inviting entrance hall, with a cozy living room, which flows seamlessly into the adjacent spacious dining room. The modern, refitted kitchen features matching units, with a stainless steel sink unit, with plumbing for a washing machine and dishwasher, a built-in electric oven, and a four-ring electric hob.

The stylish refitted bathroom offers a three-piece suite, including a panelled bath with shower over, a vanity wash hand basin, and a low-level WC.

Upstairs, the main bedroom features a storage cupboard, while the comfortable second bedroom provides ample space. The refitted shower room contains a three-piece suite with a double shower cubicle. The third bedroom offers a comfortable space with natural light.

The outdoor area is enclosed by a wooden panel fence and includes a seating area, lawn, and gated side access to the front of the property, along with outside lighting.

22/01588/FUL | Demolition of existing garage and erection of a dwelling | 185 Alexandra Road Peterborough PE1 3DL

Tenure: Freehold  
Council Tax Band: B





**Floor Plan**  
**Entrance Hall:**

**Lounge:** 3.65m x 2.74m  
 (12' x 9'11")

**Dining Room:** 3.96m x 3.65m  
 (13'3" x 12'3")

**Kitchen:** 4.26m x 2.74m  
 (14'2" x 9'7")

**Family Bathroom:**

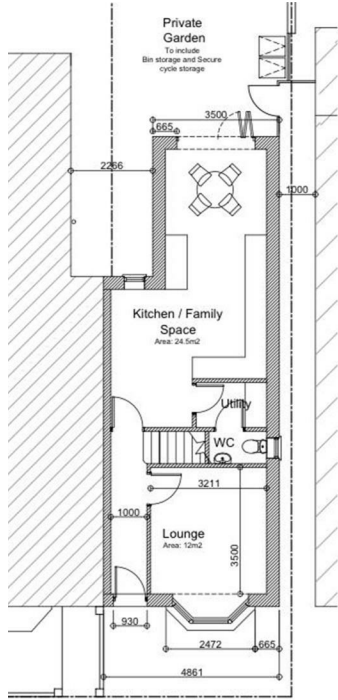
**First Floor & Landing:**

**Bedroom One:** 3.96m x 3.65m  
 (13'4" x 12')

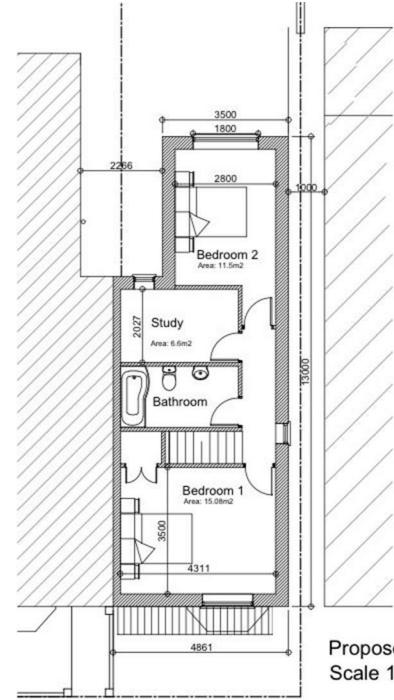
**Bedroom Two:** 3.65m x 3.04m  
 (12'5" x 10')

**Bedroom Three:** 3.05m x 2.43m  
 (10'3" x 8'3")

**Shower Room:**



Proposed Ground Floor Plan  
 Scale 1:100



Proposed First Floor Plan  
 Scale 1:100

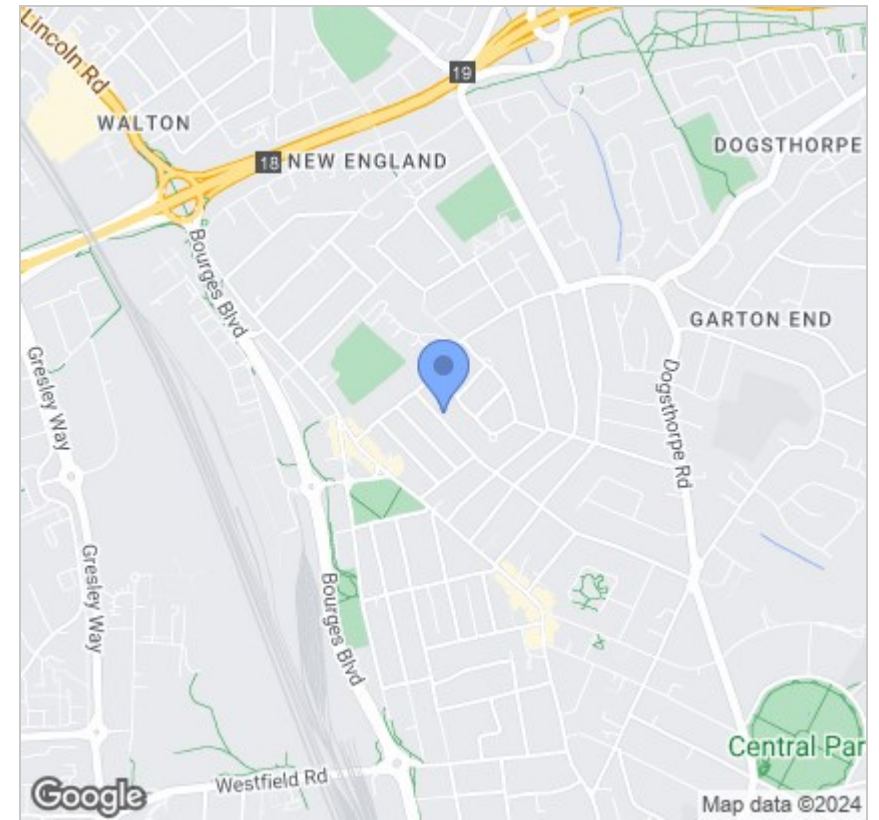
Schedule of Accommodation	
No.	Description
185A	2 Bedroom 4 1/2
Total Site Area: 135m <sup>2</sup>	
Ground Floor 48m <sup>2</sup>	
First Floor 47m <sup>2</sup>	



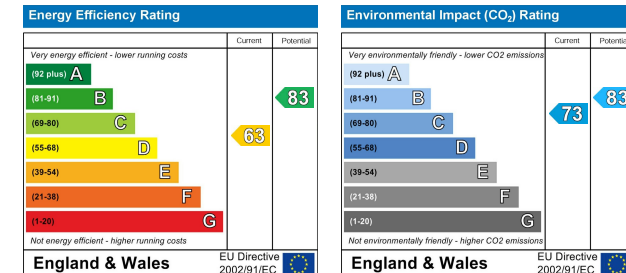
## Floor Plan



## Area Map



## Energy Efficiency Graph



## Viewing

Please contact our Peterborough Office on 01733 834727 if you wish to arrange a viewing appointment for this property or require further information.

These particulars, whilst believed to be accurate are set out as a general outline only for guidance and do not constitute any part of an offer or contract. Intending purchasers should not rely on them as statements of representation of fact, but must satisfy themselves by inspection or otherwise as to their accuracy. No person in this firm's employment has the authority to make or give any representation or warranty in respect of the property.



381 Eastfield Road,  
Peterborough, PE1 4RA  
T: 01733 834727  
E: peterborough@firminandco.co.uk