



Peter Greateorex
unique homes



Upper Thrupe Farm Thrupe Lane, Masbury, BA5 3HD

Offers In Excess Of £1,350,000





Upper Thrupe Farm Thrupe Lane

Masbury, BA5 3HD

- Attractive 5 bedroom Georgian country farmhouse with equestrian facilities
- Sitting room, study
- 3 double bedrooms, 1 single bed/cot room and spacious converted loft bedroom
- A spacious stable barn with five Monarch Equestrian stables
- Two further outbuildings - partially converted accommodation
- Farmhouse kitchen with range cooker, separate utility and laundry rooms
- Family bathroom, en suite to principal bedroom, cloakroom WC, loft room WC
- 5.58 acres including garden, paddocks and arena, chicken shed and field shelter
- Two storey barn, tack room, open barn and workshops
- 2 x outside WCs and kitchenette

An exciting opportunity to purchase a 4 bedroom Georgian farmhouse with garden in approx. 5 acres of land, with stabling for up to 5 horses, an arena, tack room, a two-storey barn, office, workshop and outbuildings with potential for development, in a peaceful rural location within easy distance of the City of Wells.



Description

Equestrian

Further outbuildings

Garden

Location

Further information



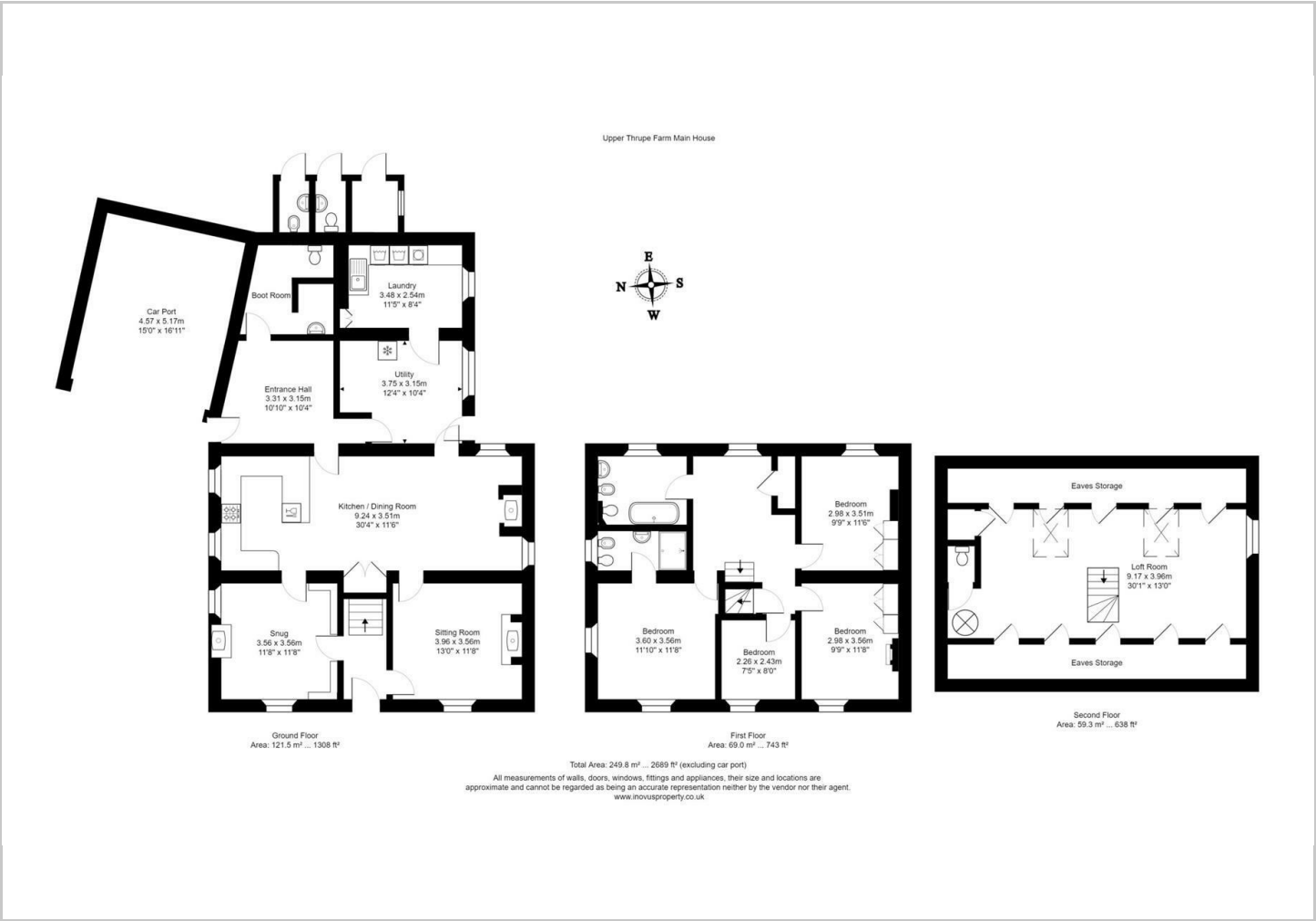


Directions





Floor Plans



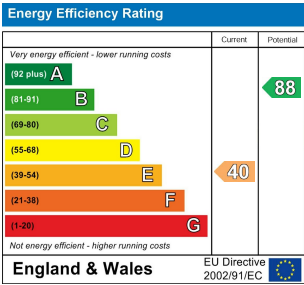
Location Map



Viewing

Please contact our Bath Office on 01225 904999 if you wish to arrange a viewing appointment for this property or require further information.

Energy Performance Graph



The particulars are set out as a general outline only for the guidance of intended purchasers or lessees, and do not constitute, any part of a contract. Nothing in these particulars shall be deemed to be a statement that the property is in good structural condition or otherwise nor that any of the services, appliances, equipment or facilities are in good working order. Purchasers should satisfy themselves of this prior to purchasing.