



Trentdale Road
Carlton, Nottingham NG4 1BU

A WELL PRESENTED FOUR BEDROOM
DETACHED HOME FOR SALE IN
NOTTINGHAM!

Asking Price £350,000 Freehold

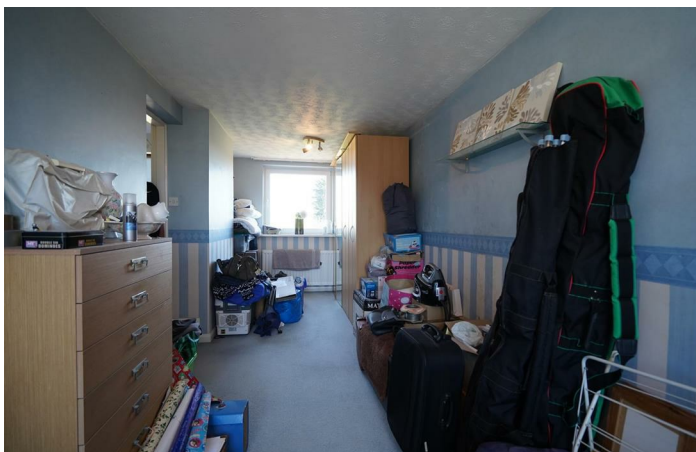


Set in a well-established and highly convenient neighbourhood, this generous four-bedroom detached property is the perfect place for a growing family to put down roots. With spacious interiors, a large garden, and great local amenities close by, it offers both comfort and practicality in equal measure.

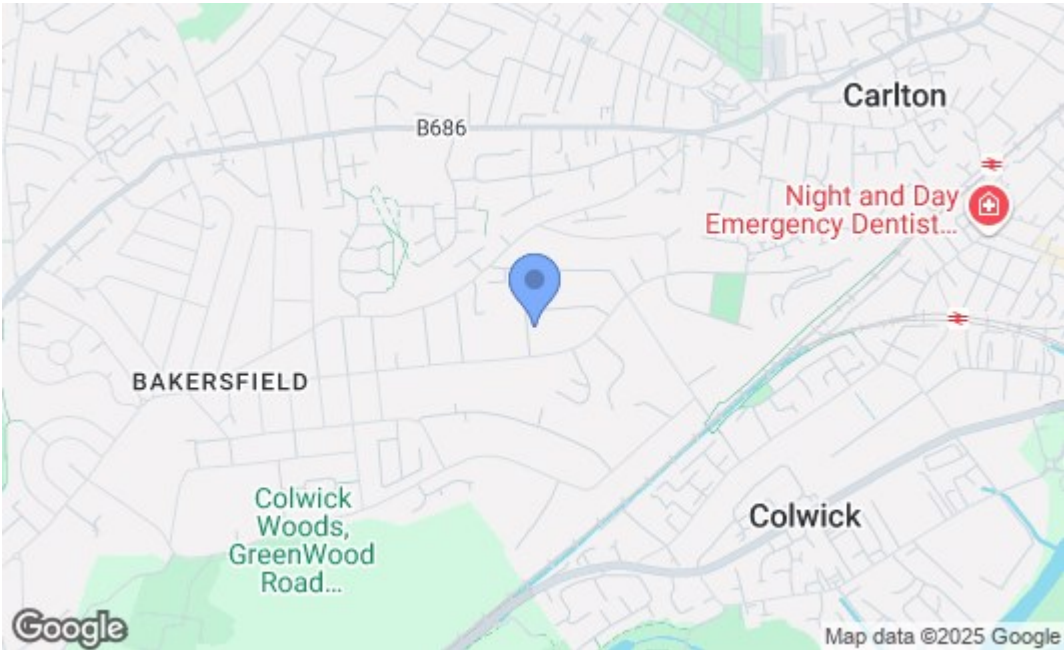
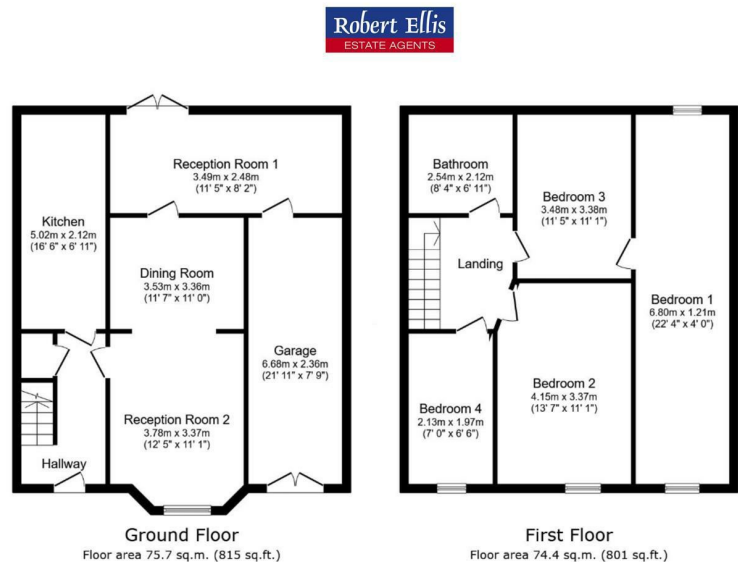
Step inside to find a welcoming hallway that leads through to a bright and comfortable living room, ideal for relaxing evenings. The adjoining dining area offers a great space for mealtimes and entertaining, while the kitchen provides plenty of room for everyday cooking and storage. Upstairs, there are four well-proportioned bedrooms along with a modern family bathroom, offering flexible space for children, guests, or a home office.

To the rear, the private garden is a real highlight—featuring a paved patio area and a good-sized lawn, perfect for outdoor play or summer barbecues. At the front, the property benefits from a driveway with ample parking and an integral garage for additional storage or vehicle space.

Located within easy reach of shops, schools, and regular transport links, this home offers everyday convenience in a friendly and well-connected area. Whether you're upsizing or simply looking for more room to grow, this is a fantastic opportunity not to be missed.







| Energy Efficiency Rating | | |
|---|---------|-----------|
| | Current | Potential |
| Very energy efficient - lower running costs | | |
| (92-plus) A | | |
| (81-91) B | | |
| (69-80) C | | |
| (55-68) D | | |
| (39-54) E | | |
| (21-38) F | | |
| (1-20) G | | |
| Not energy efficient - higher running costs | | |
| England & Wales EU Directive 2002/91/EC | | |
| Environmental Impact (CO ₂) Rating | | |
| | Current | Potential |
| Very environmentally friendly - lower CO ₂ emissions | | |
| (92-plus) A | | |
| (81-91) B | | |
| (69-80) C | | |
| (55-68) D | | |
| (39-54) E | | |
| (21-38) F | | |
| (1-20) G | | |
| Not environmentally friendly - higher CO ₂ emissions | | |
| England & Wales EU Directive 2002/91/EC | | |

These details are for guidance only and complete accuracy cannot be guaranteed. If there is any point, which is of particular importance, verification should be obtained. All measurements are approximate. No guarantee can be given with regard to planning permissions or fitness for purpose. No apparatus, equipment, fixture or fitting has been tested.