





An exceptional contemporary four-bedroom home in Surrey, GU10 1LA, offering striking design, generous living space, and impressive sustainability features, all complemented by far-reaching elevated views. The property boasts four spacious bedrooms, three luxury en-suite bathrooms, a guest WC, and a versatile loft room ideal for a bedroom or home office. Designed for modern living, it features a bespoke open-plan kitchen with premium integrated appliances, an architecturally impressive basement with twin atriums flooding the space with natural light, multiple balconies, and a double garage. Further highlights include a dedicated laundry area, workshop space, and advanced eco-features such as an air source heat pump, private borehole water supply, and water softener system.



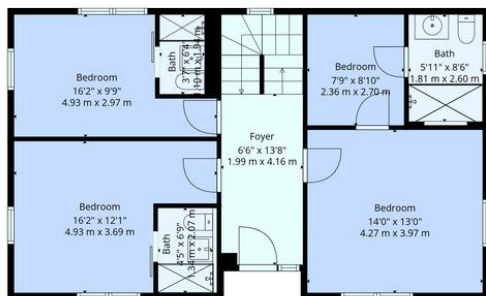
Exceptional contemporary four-bedroom home

Surrey location – GU10 1LA with elevated views

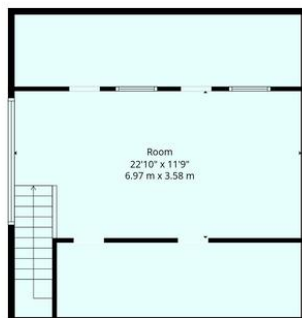
Three luxury en-suites + guest WC

Bespoke open-plan kitchen with premium integrated appliances

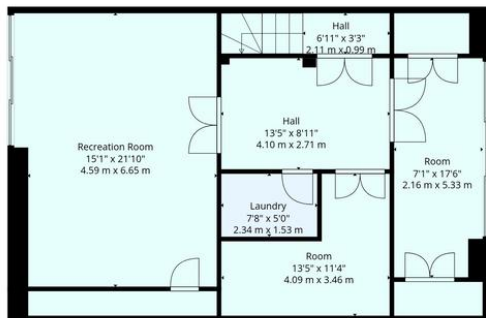
Striking basement with twin atriums and natural light



1st Floor



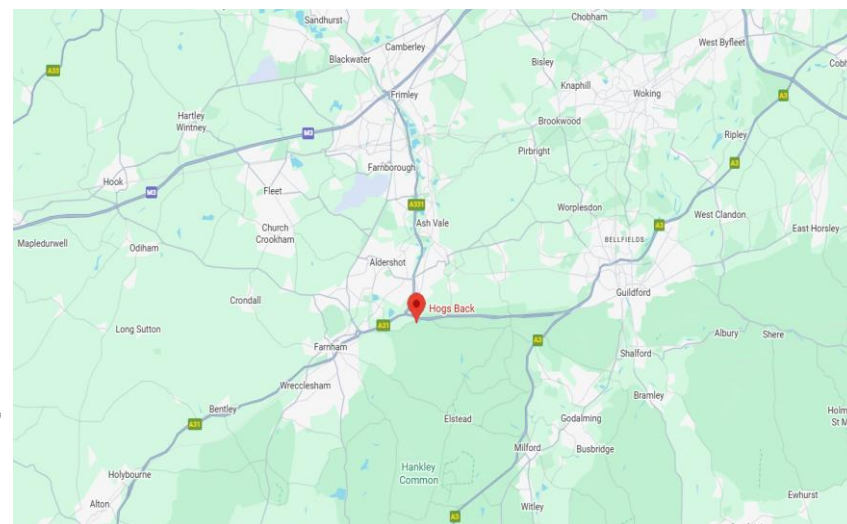
3rd Floor



Basement 1



2nd Floor



loor Plans Are Provided For General Guidance And Illustrative Purposes Only. While Every Effort Has Been Made To Ensure Accuracy, Measurements And Layouts Are Approximate And Not To Scale. These Plans Should Not Be Relied Upon For Valuation, Legal, Or Mortgage Purposes. We Recommend All Interested Parties Carry Out Their Own Inspections And Assessments

TOTAL: 3010 sq. ft

BELOW GRADE: 902 sq. ft, 84 m², 1st floor: 814 sq. ft, 76 m², 2nd floor: 748 sq. ft, 69 m², 3rd floor: 314 sq. ft, 29 m²
BALCONY: 141 sq. ft, 13 m², LOW CEILING: 238 sq. ft, 22 m², WALLS: 232 sq. ft, 22 m²

Hiltons Estates, 137 Western Road
Southall, UB2 5HN

www.hiltons-estates.com
email: harvin@hiltons-estates.com
0208 867 9555 / 07961 527301

Agents Note: Whilst every care has been taken to prepare these sales particulars, they are for guidance purposes only. All measurements are approximate are for general guidance purposes only and whilst every care has been taken to ensure their accuracy, they should not be relied upon and potential buyers are advised to recheck the measurements.