





TURN KEY READY: Hiltons Estates brings to the market this Spacious and Well presented Detached property located in Hounslow, TW4. The ground floor comprises a porch, entrance hallway, WC, leading to a living room, kitchen/diner and further living room. The first floor has a landing leading to 3 Well sized bedrooms and family bathroom. The second floor holds a Master bedroom, with En suite bathroom and separate dressing room. The property is immaculate throughout and has a low maintenance garden to the rear. There is off street parking for multiple cars to the front of the property.

Kevin Close is situated within walking distance to Hounslow West Underground Station, local amenities, and recommended Schools. Bus and Transport links are close by to Heathrow, Central London, M4, M25 and A40. A brilliant opportunity for Families, Commuters and INVESTORS. Call NOW for further details. Viewings available. No to be missed.



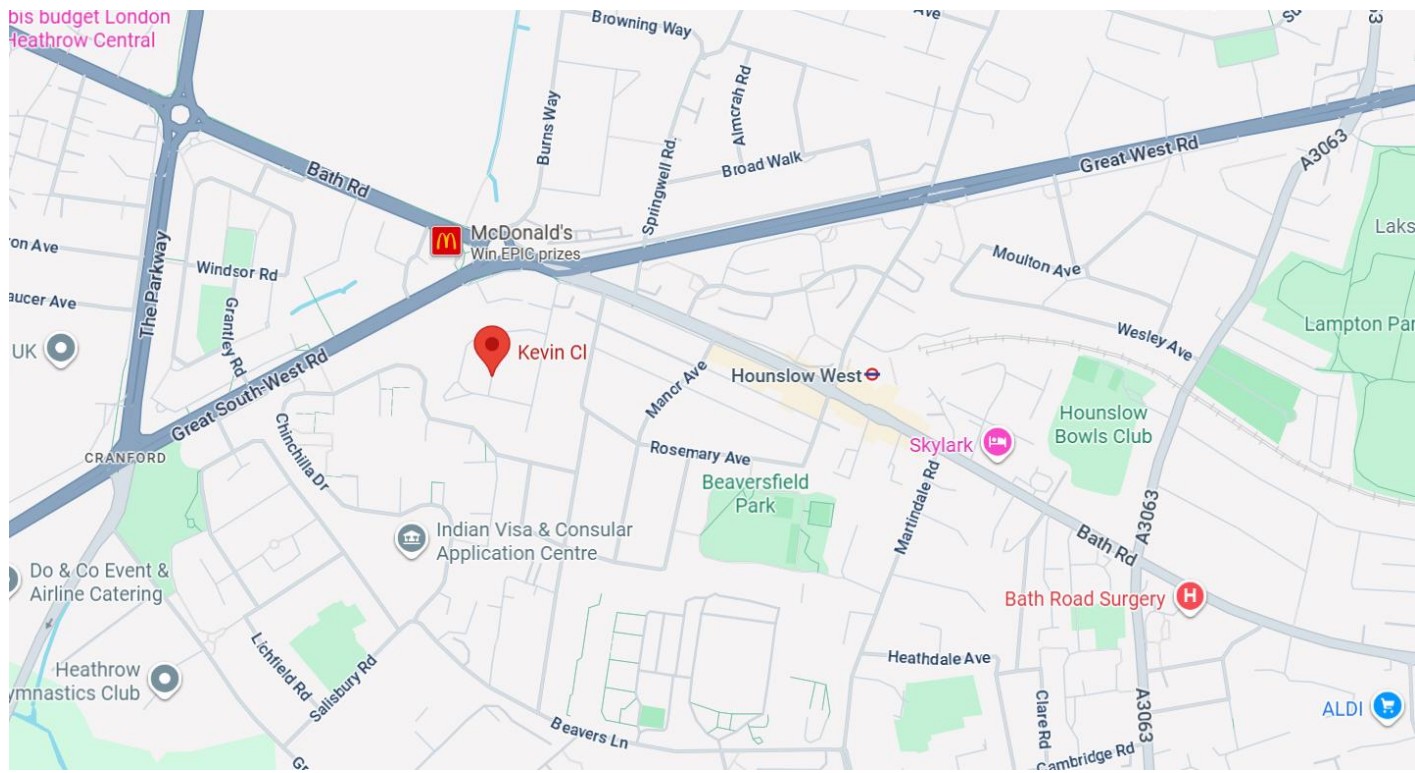
Immaculate 4 bed, 2 bath, 3 WC's Detached property in TW4

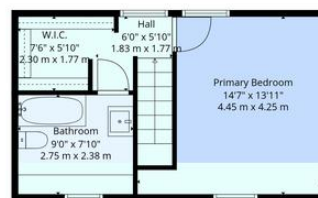
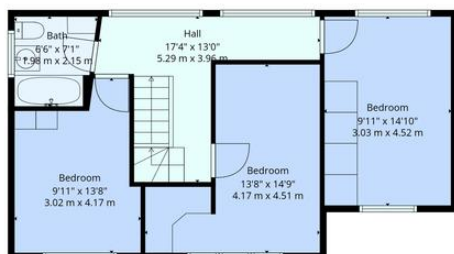
Master bedroom with Ensuite and dressing room

Off street parking, private rear garden

Walking distance to Hounslow West Underground

Recommended Schools, Amenities and Transport links nearby





Score	Energy rating	Current	Potential
92+	A		
81-91	B		82 B
69-80	C	72 C	
55-68	D		
39-54	E		
21-38	F		
1-20	G		



TOTAL: 1839 sq. ft, 171 m2
FLOOR 1: 967 sq. ft, 90 m2, FLOOR 2: 596 sq. ft, 55 m2, FLOOR 3: 276 sq. ft, 26 m2
EXCLUDED AREAS: LOW CEILING: 58 sq. ft, 5 m2, WALLS: 180 sq. ft, 17 m2

loor Plans Are Provided For General Guidance And Illustrative Purposes Only. While Every Effort Has Been Made To Ensure Accuracy, Measurements And Layouts Are Approximate And Not To Scale. These Plans Should Not Be Relied Upon For Valuation, Legal, Or Mortgage Purposes. We Recommend All Interested Parties Carry Out Their Own Inspections And Assessments.

Hiltons Estates, 137 Western Road
Southall, UB2 5HN

www.hiltons-estates.com
email: harvin@hiltons-estates.com
0208 867 9555 / 07961 527301

Agents Note: Whilst every care has been taken to prepare these sales particulars, they are for guidance purposes only. All measurements are approximate are for general guidance purposes only and whilst every care has been taken to ensure their accuracy, they should not be relied upon and potential buyers are advised to recheck the measurements.