





A rare opportunity to own this grand 6/7-bedroom semi-detached home, offering just over 3,100 sq ft of beautifully presented living space on one of UB2 Norwood Green's most sought-after roads. Perfect for large families or those who love space and comfort.

Boasting multiple reception rooms, a large modern kitchen, four bathrooms and a huge private garden, this property is ideal for both entertaining and everyday family life. The driveway can accommodate 7+ cars, making parking stress-free for you and your guests.

A move-in ready home offering impressive space, privacy, and charm – viewings highly recommended!

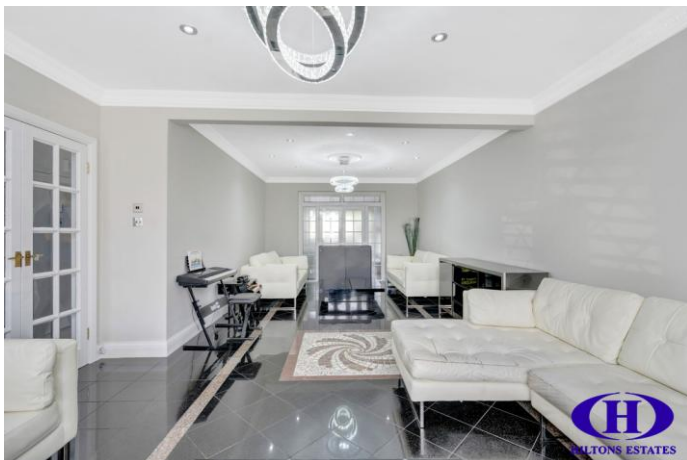
6/7 spacious bedrooms

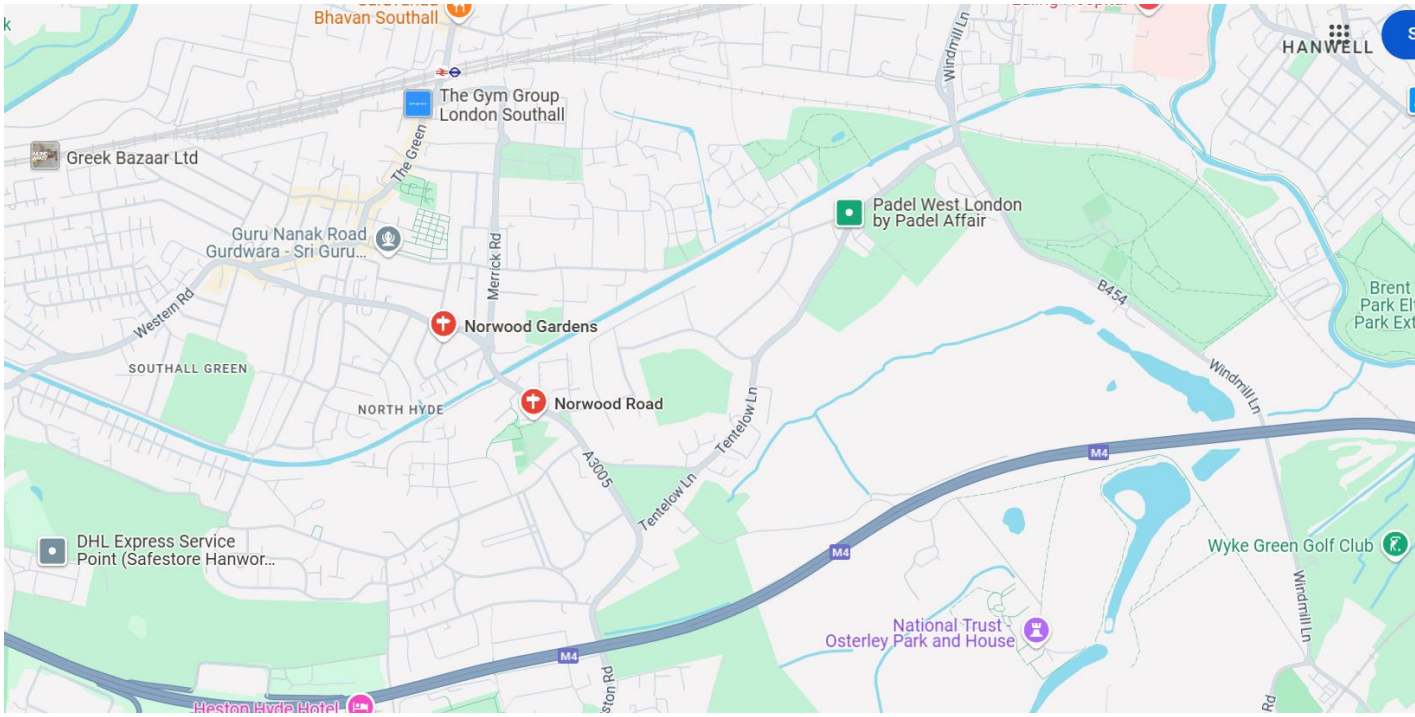
Multiple reception areas

Contemporary kitchen and dining space

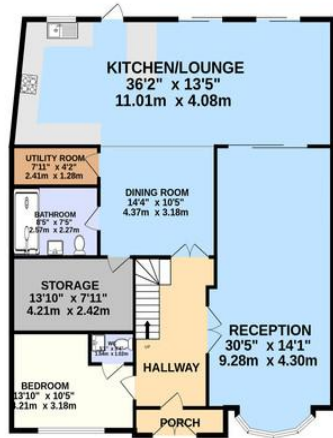
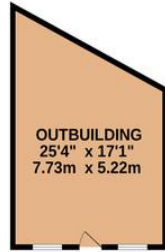
Expansive rear garden

Driveway for 7+ cars





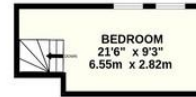
GROUND FLOOR
1910 sq.ft. (177.4 sq.m.) approx.



1ST FLOOR
1056 sq.ft. (98.1 sq.m.) approx.



2ND FLOOR
188 sq.ft. (17.5 sq.m.) approx.



HILTONS ESTATES

TOTAL FLOOR AREA: 3154 sq.ft. (293.0 sq.m.) approx.

Whilst every attempt has been made to ensure the accuracy of the floorplan contained here, measurements of doors, windows, rooms and any other items are approximate and no responsibility is taken for any error, omission or mis-statement. This plan is for illustrative purposes only and should be used as such by any prospective purchaser. The services, systems and appliances shown have not been tested and no guarantee as to their operability or efficiency can be given.
Made with Metropix 62025



Hiltons Estates, 137 Western Road
Southall, UB2 5HN

www.hiltons-estates.com
email: harvin@hiltons-estates.com
0208 867 9555 / 07961 527301

Agents Note: Whilst every care has been taken to prepare these sales particulars, they are for guidance purposes only. All measurements are approximate and are for general guidance purposes only and whilst every care has been taken to ensure their accuracy, they should not be relied upon and potential buyers are advised to recheck the measurements.