







Exceptional 6-Bedroom Home in Sought-After Norwood Green, UB2

Discover this beautifully presented, turn-key ready residence offering the perfect blend of space, style, and convenience. Boasting six generously sized bedrooms and two expansive living rooms, this home is designed for modern family living. The contemporary kitchen diner, complemented by a separate utility room, creates an effortless flow for both everyday life and entertaining.

Outside, the large, low-maintenance rear garden provides a serene retreat, while the versatile outbuilding is ideal as a home office, gym, or guest accommodation. Off-street parking for 2-3 cars adds to the practicality. With potential for further extension and development (STPP), this property offers an exciting investment opportunity.

Located in the prestigious Norwood Green area, you're moments from Norwood Green and Osterley Park, excellent local shops, and outstanding schools including Khalsa Primary and St Mary's Church of England-all within walking distance. Enjoy effortless connectivity to Central London, Heathrow, and major motorways.



A rare opportunity to own a luxurious, future-proofed home in a prime location. Enquire today to arrange a viewing!

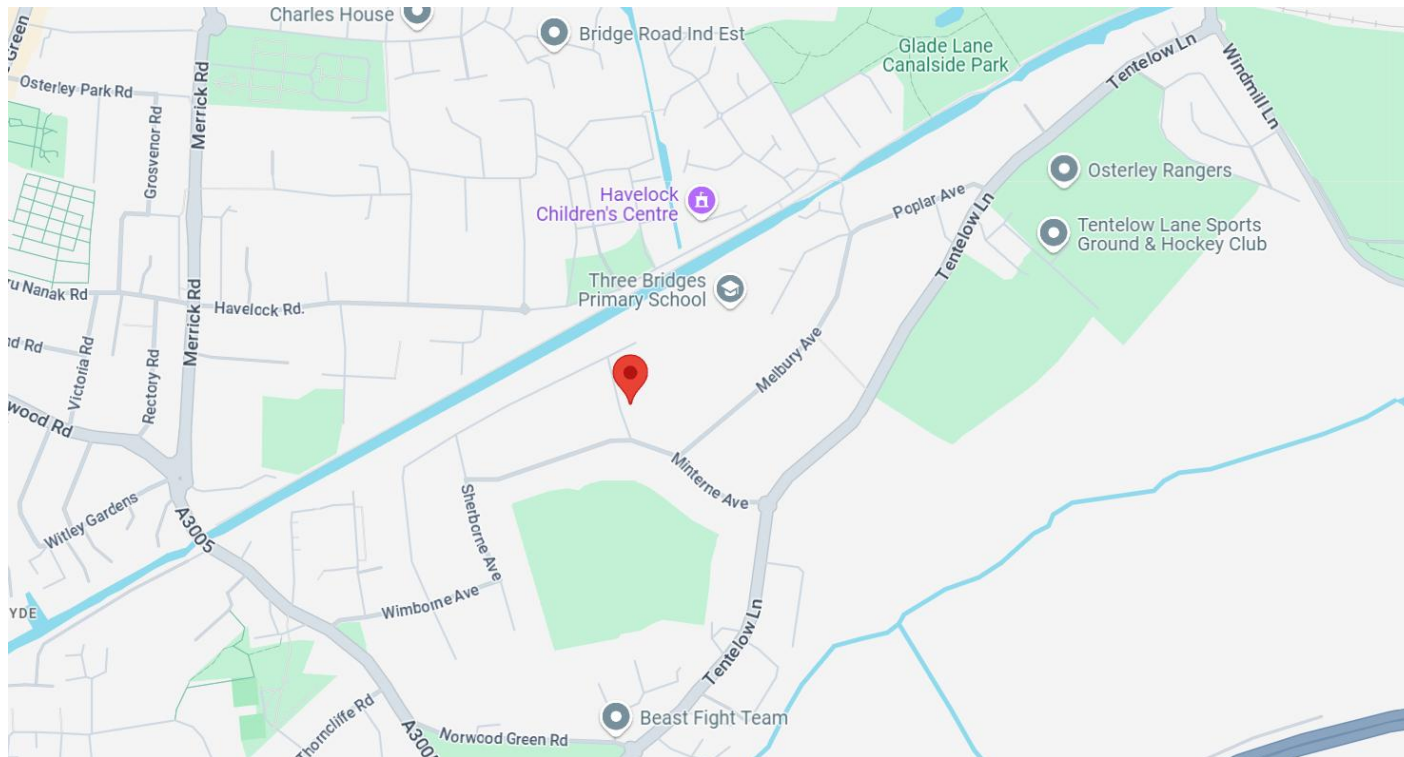
Prime Location: Sought-after Norwood Green.

6-Bed Beauty: Spacious, stylish & move-in ready.

Dual Living Areas: Two large reception rooms.

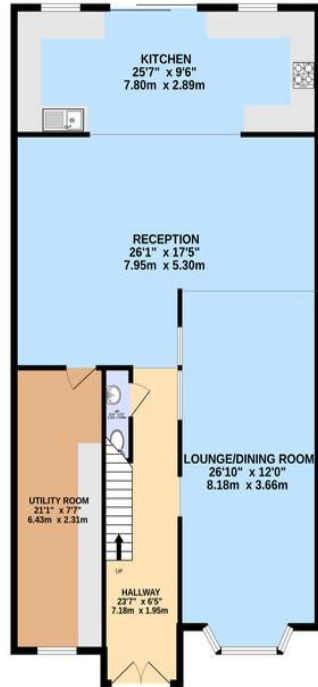
Versatile Outbuilding: Use as office, gym, or guest room.

Low-Maintenance Garden: Perfect for relaxation.

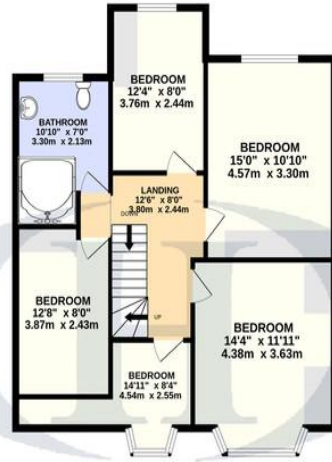




GROUND FLOOR  
1234 sq.ft. (114.6 sq.m.) approx.



1ST FLOOR  
777 sq.ft. (72.2 sq.m.) approx.



2ND FLOOR  
442 sq.ft. (41.1 sq.m.) approx.



HILTONS ESTATES

TOTAL FLOOR AREA: 2453 sq.ft. (227.9 sq.m.) approx.

Whilst every attempt has been made to ensure the accuracy of the floorplan contained here, measurements of doors, windows, rooms and any other items are approximate and no responsibility is taken for any error, omission or mis-statement. This plan is for illustrative purposes only and should be used as such by any prospective purchaser. The services, systems and appliances shown have not been tested and no guarantee as to their operability or efficiency can be given.  
Made with Metropix ©2025



Hiltons Estates, 137 Western Road  
Southall, UB2 5HN

[www.hiltons-estates.com](http://www.hiltons-estates.com)  
email: [harvin@hiltons-estates.com](mailto:harvin@hiltons-estates.com)  
0208 867 9555 / 07961 527301

Agents Note: Whilst every care has been taken to prepare these sales particulars, they are for guidance purposes only. All measurements are approximate and for general guidance purposes only and whilst every care has been taken to ensure their accuracy, they should not be relied upon and potential buyers are advised to recheck the measurements.