







Hiltons Estates is pleased to present this Stunning ground floor 1 bedroom apartment The well sized kitchen leads to a spacious living room access to garden spaces. The property comes with 1 double bedroom and a spacious bathroom. There is on street parking and access to spacious communal gardens!!! Close to local amenities, shops, schools, places of worship and transport links it offers comfort in a central location. Long lease 120 years remaining. This property is a Brilliant Opportunity for First Time Buyers!!! Book your viewings now!! Highly Recommended! Not to be missed!

Following purchase criteria applies: Currently do not own a property, live or work in the Ealing Borough and household income below £90,000

1-bedroom ground floor apartment with spacious living room and garden access.

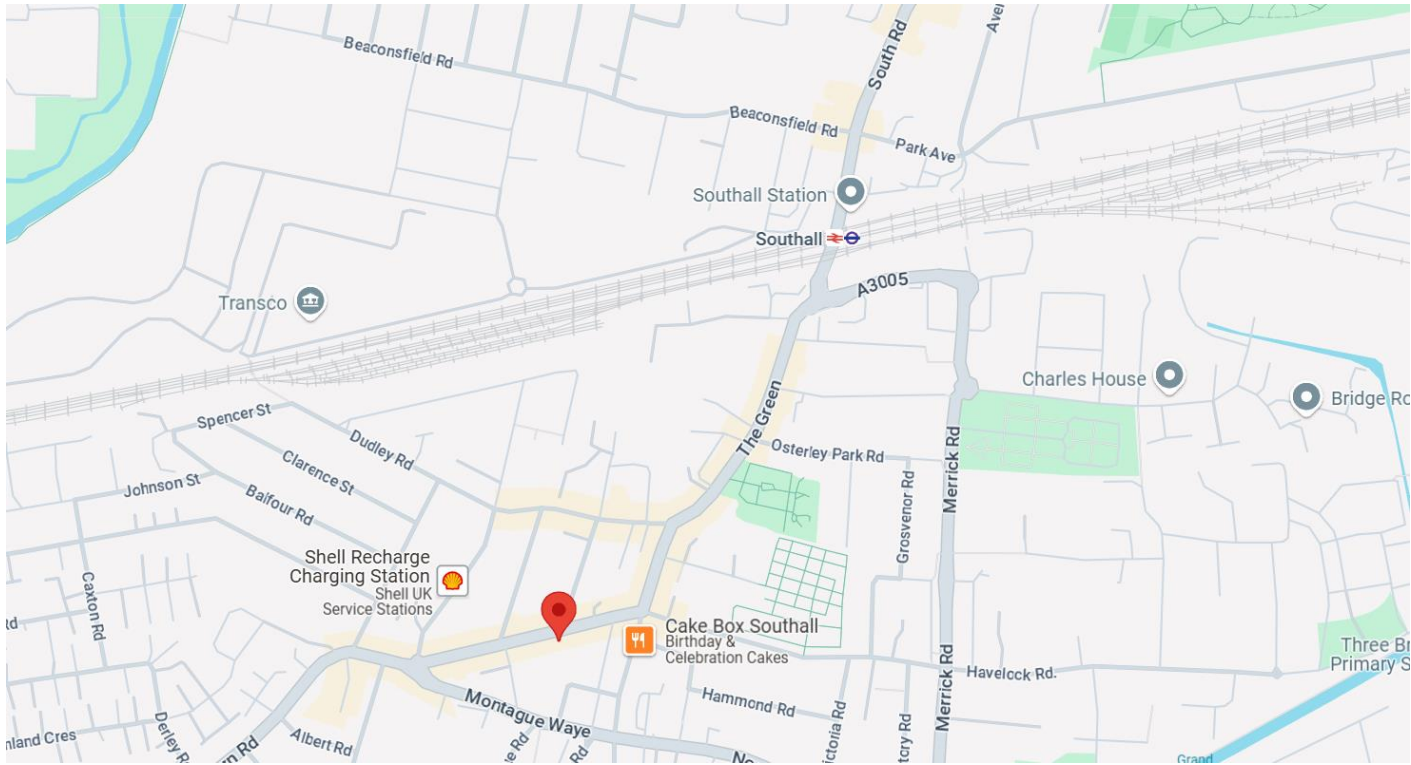
Close to amenities, schools, and transport links.

On-street parking and access to communal gardens.

120-year lease remaining.

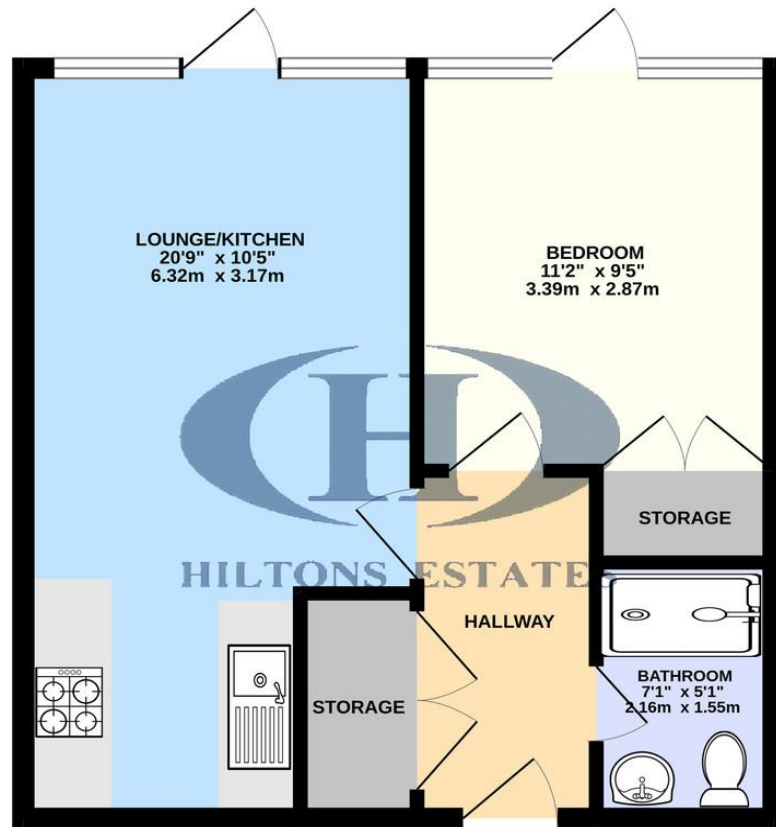
Eligible for first-time buyers with household income below £90,000







GROUND FLOOR  
411 sq.ft. (38.1 sq.m.) approx.



TOTAL FLOOR AREA : 411 sq.ft. (38.1 sq.m.) approx.

Whilst every attempt has been made to ensure the accuracy of the floorplan contained here, measurements of doors, windows, rooms and any other items are approximate and no responsibility is taken for any error, omission or mis-statement. This plan is for illustrative purposes only and should be used as such by any prospective purchaser. The services, systems and appliances shown have not been tested and no guarantee as to their operability or efficiency can be given.  
Made with Metropix ©2024

Score	Energy rating	Current	Potential
92+	A		
81-91	B	88 B	88 B
69-80	C		
55-68	D		
39-54	E		
21-38	F		
1-20	G		

Hiltons Estates, 137 Western Road  
Southall, UB2 5HN

[www.hiltons-estates.com](http://www.hiltons-estates.com)  
email: [harvin@hiltons-estates.com](mailto:harvin@hiltons-estates.com)  
0208 867 9555 / 07961 527301

Agents Note: Whilst every care has been taken to prepare these sales particulars, they are for guidance purposes only. All measurements are approximate are for general guidance purposes only and whilst every care has been taken to ensure their accuracy, they should not be relied upon and potential buyers are advised to recheck the measurements.