







Hiltons Estates proudly presents an impressive 6-bedroom family home in Hounslow, spanning three expansive floors and boasting ample living space. This residence offers the potential for modernisation and extension (STPP), making it a versatile and accommodating property. The interior features a double reception room and a separate front lounge, complemented by a smart family bathroom and two shower rooms for convenience. A mature lawn and patio garden with side access provide a charming outdoor retreat. The property also includes a spacious self-contained annex with both front and rear access, adding to its versatility. With off-street parking for two vehicles and a garage, this family home is not only spacious but also convenient. Positioned in an excellent location for amenities in Hounslow, including transport links, this home is an ideal blend of space, potential, and accessibility. Schedule a viewing now to explore the charm and possibilities this property has to offer.

Expansive 6-bedroom family home in Hounslow

Arranged over 3 floors with ample living space

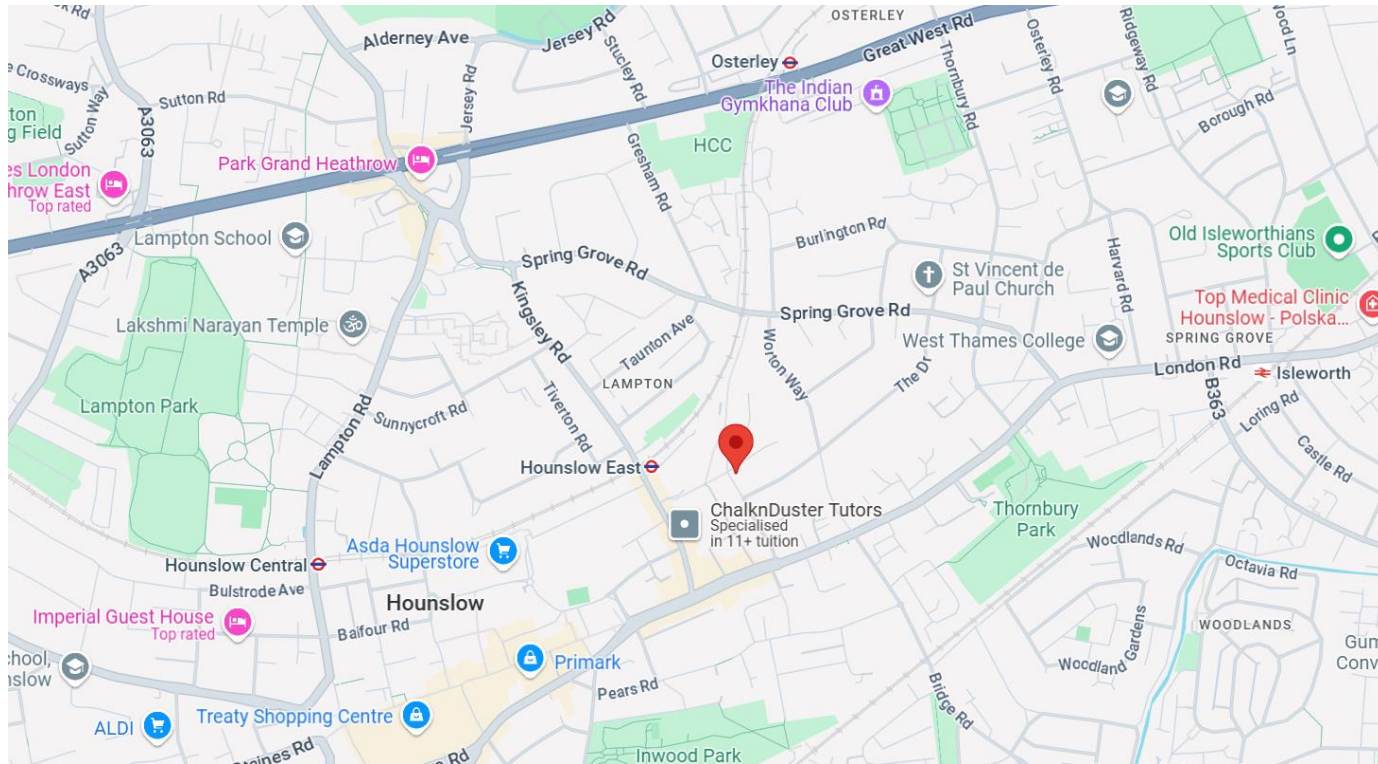
Features a double reception room and separate front lounge

Offers potential for modernization and extension (STPP)

Includes a mature lawn, patio garden, side annex, and off-street parking for 2 vehicles plus a garage







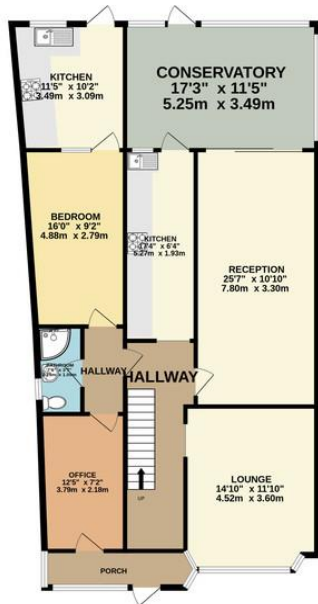
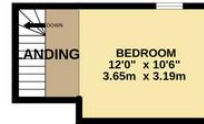
GROUND FLOOR  
1451 sq.ft. (134.8 sq.m.) approx.



1ST FLOOR  
622 sq.ft. (57.8 sq.m.) approx.



2ND FLOOR  
174 sq.ft. (16.2 sq.m.) approx.



TOTAL FLOOR AREA : 2247 sq.ft. (208.8 sq.m.) approx.

Whilst every attempt has been made to ensure the accuracy of the floorplan contained here, measurements of doors, windows, rooms and any other items are approximate and no responsibility is taken for any error, omission or mis-statement. This plan is for illustrative purposes only and should be used as such by any prospective purchaser. The services, systems and appliances shown have not been tested and no guarantee as to their operability or efficiency can be given.  
Made with Metroplan ©2024



Score	Energy rating	Current	Potential
92+	A		
81-91	B		
69-80	C	72 C	79 C
55-68	D		
39-54	E		
21-38	F		
1-20	G		

Hiltons Estates, 137 Western Road  
Southall, UB2 5HN

www.hiltons-estates.com  
email: harvin@hiltons-estates.com  
0208 867 9555 / 07961 527301

Agents Note: Whilst every care has been taken to prepare these sales particulars, they are for guidance purposes only. All measurements are approximate are for general guidance purposes only and whilst every care has been taken to ensure their accuracy, they should not be relied upon and potential buyers are advised to recheck the measurements.