





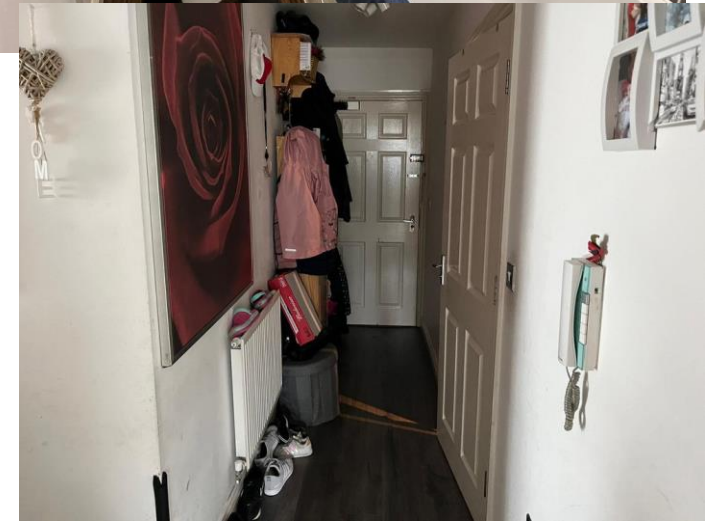
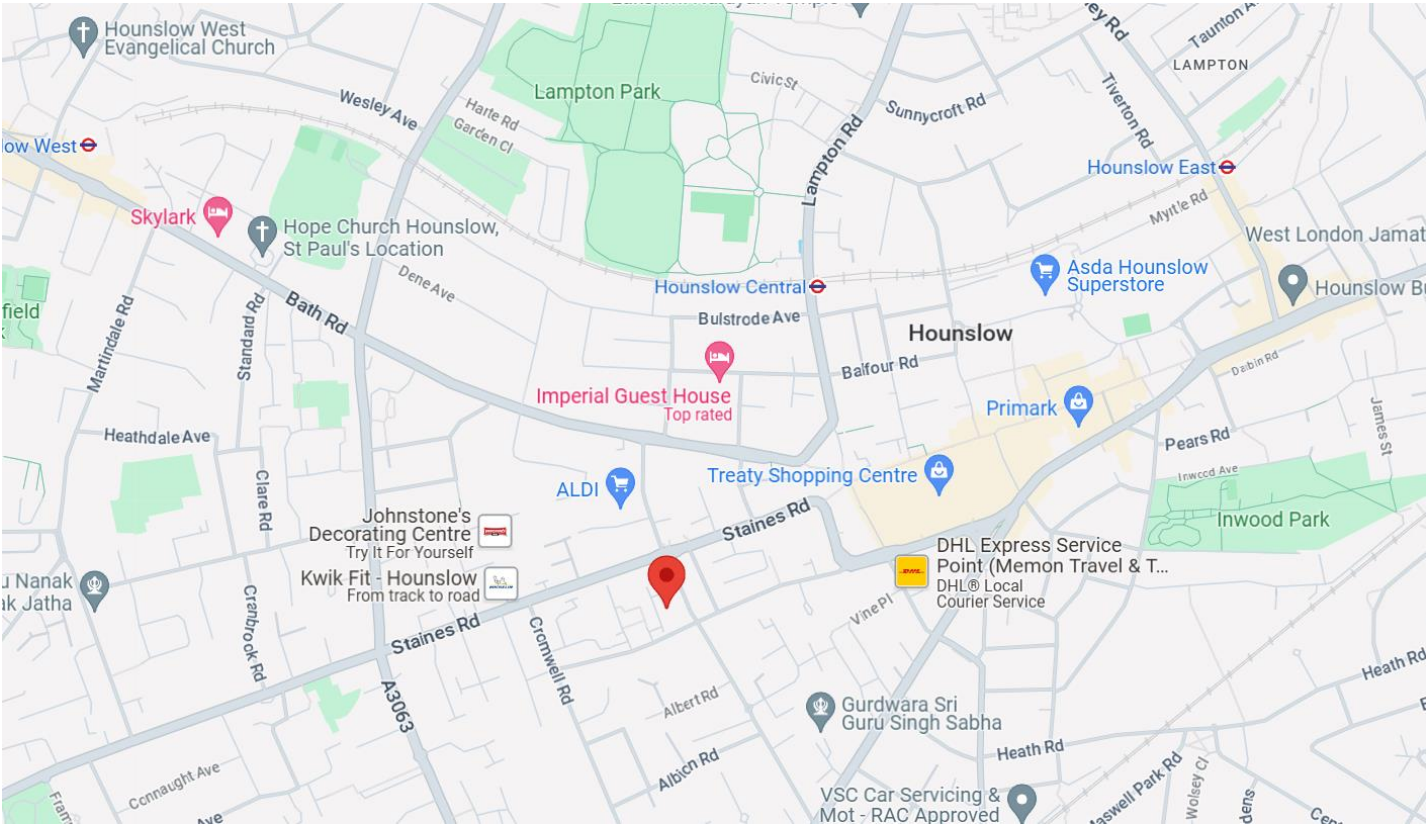
Hiltons Estates are pleased to present this modern and luxurious two bedroom apartment located in the heart of Hounslow. The apartment benefits from spacious open-plan lounge and designer kitchen with integrated cooker, fridge freezer, washing machine and dishwasher. This delightful apartment further benefits from two double rooms ideal for any homebuyer looking for a luxury property within a central location of Hounslow. Located within a sought-after area of Hounslow, it comes within walking distance to Mainline Station, shops, banks, amenities and public transport. Good transport links to Central London, Heathrow, M4, M25 and M40. Opportunity not to be missed.

Allocated parking

Within Walking distance of local amenities

Close to transport links

Two double rooms





Score	Energy rating	Current	Potential
92+	A		
81-91	B		
69-80	C	80 C	80 C
55-68	D		
39-54	E		
21-38	F		
1-20	G		