





Hiltons brings to the market this spacious studio flat located on the second floor in Heston. The property has a separate kitchen and comes with a good size bathroom. It also comes with parking and allocated garage space. The property is located within walking distance to public transport and local shops. It's also within each reach of surrounding areas of Hounslow, Southall and Cranford. A stone throw away from local schools, shops and transport links. Located in a prime patch of Heston with the M4, M25, M3 and Heathrow Airport on the doorstep.

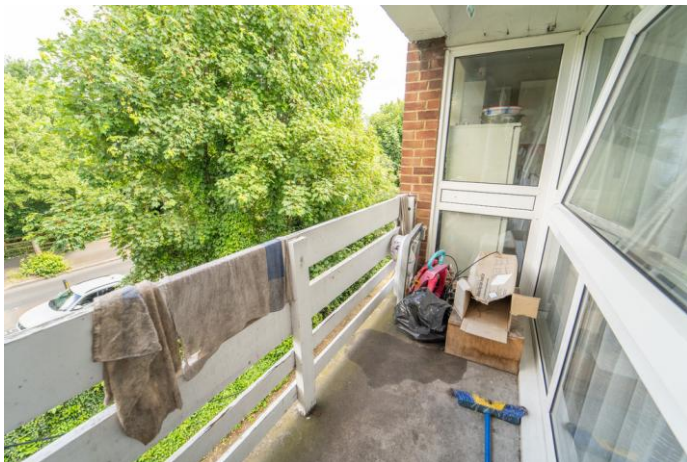
Large Studio Apartment

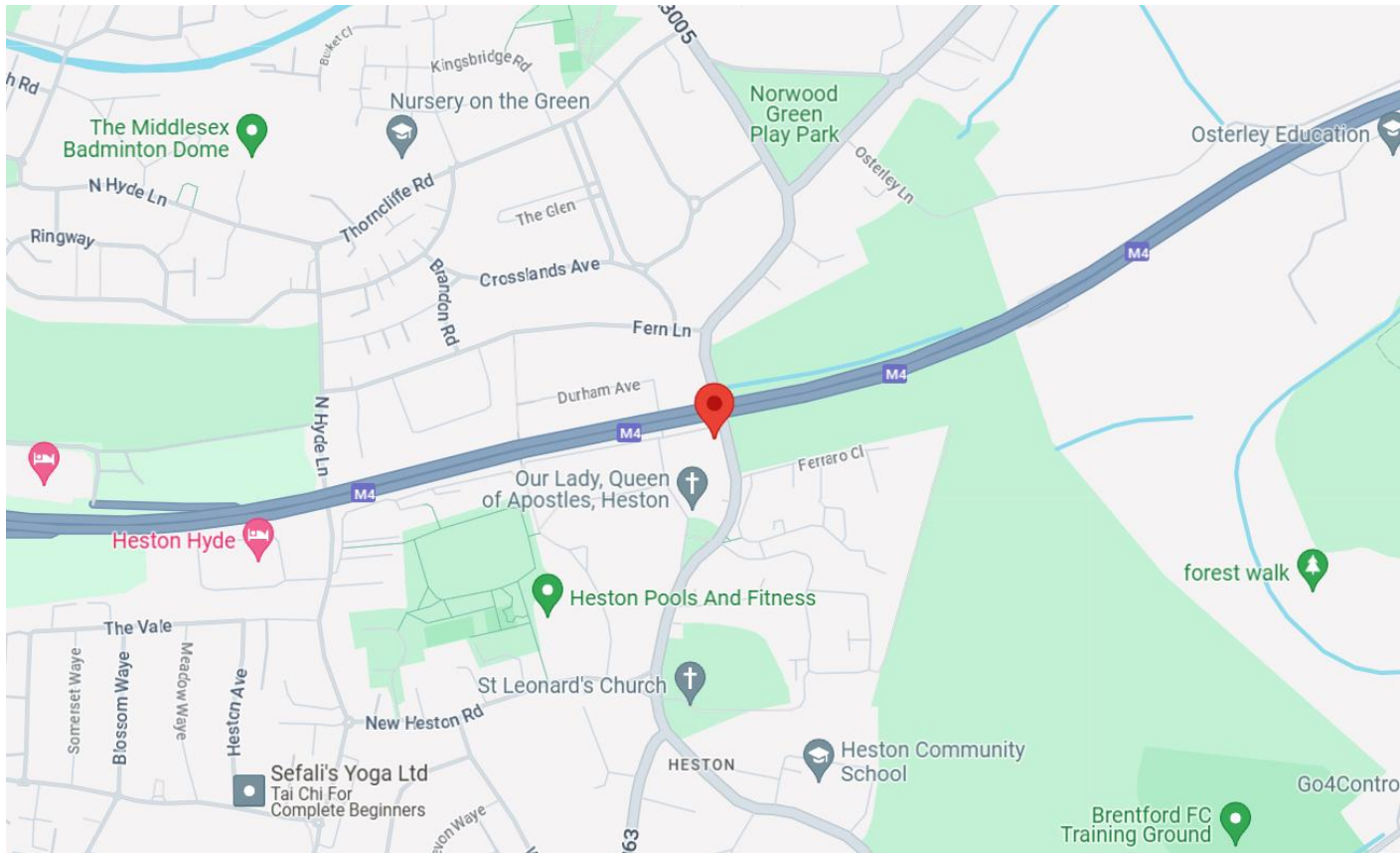
Ideal for Investors or Small Families

Garage Space for Storage or Parking

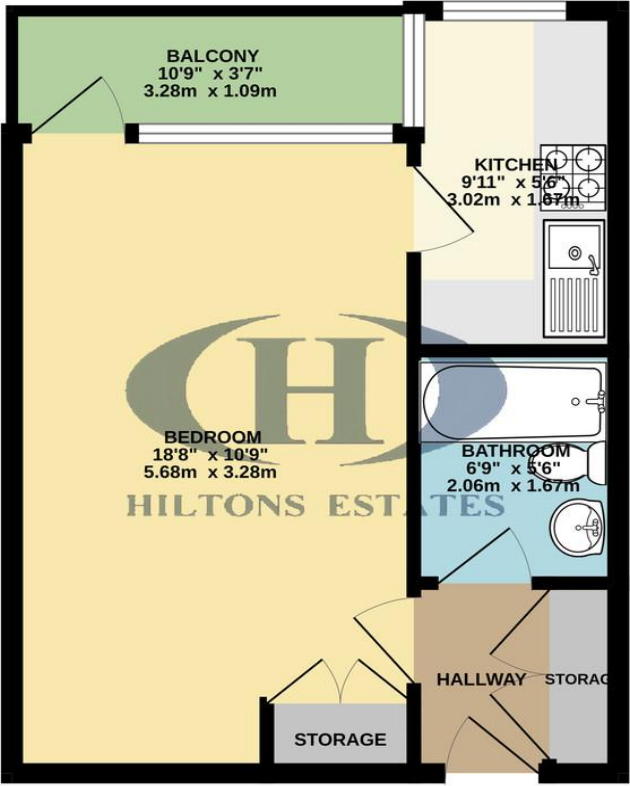
Ideal Location Situated near Transport and Amenities

Communal Parking Available





GROUND FLOOR
322 sq.ft. (29.9 sq.m.) approx.



Score	Energy rating	Current	Potential
92+	A		
81-91	B		
69-80	C		76 C
55-68	D	60 D	
39-54	E		
21-38	F		
1-20	G		

TOTAL FLOOR AREA : 322 sq.ft. (29.9 sq.m.) approx.
Whilst every attempt has been made to ensure the accuracy of the floorplan contained here, measurements of doors, windows, rooms and any other items are approximate and no responsibility is taken for any error, omission or mis-statement. This plan is for illustrative purposes only and should be used as such by any prospective purchaser. The services, systems and appliances shown have not been tested and no guarantee as to their operability or efficiency can be given.
Made with Metropix ©2024

Hiltons Estates, 137 Western Road
Southall, UB2 5HN

www.hiltons-estates.com
email: harvin@hiltons-estates.com
0208 867 9555 / 07961 527301

Agents Note: Whilst every care has been taken to prepare these sales particulars, they are for guidance purposes only. All measurements are approximate are for general guidance purposes only and whilst every care has been taken to ensure their accuracy, they should not be relied upon and potential buyers are advised to recheck the measurements.