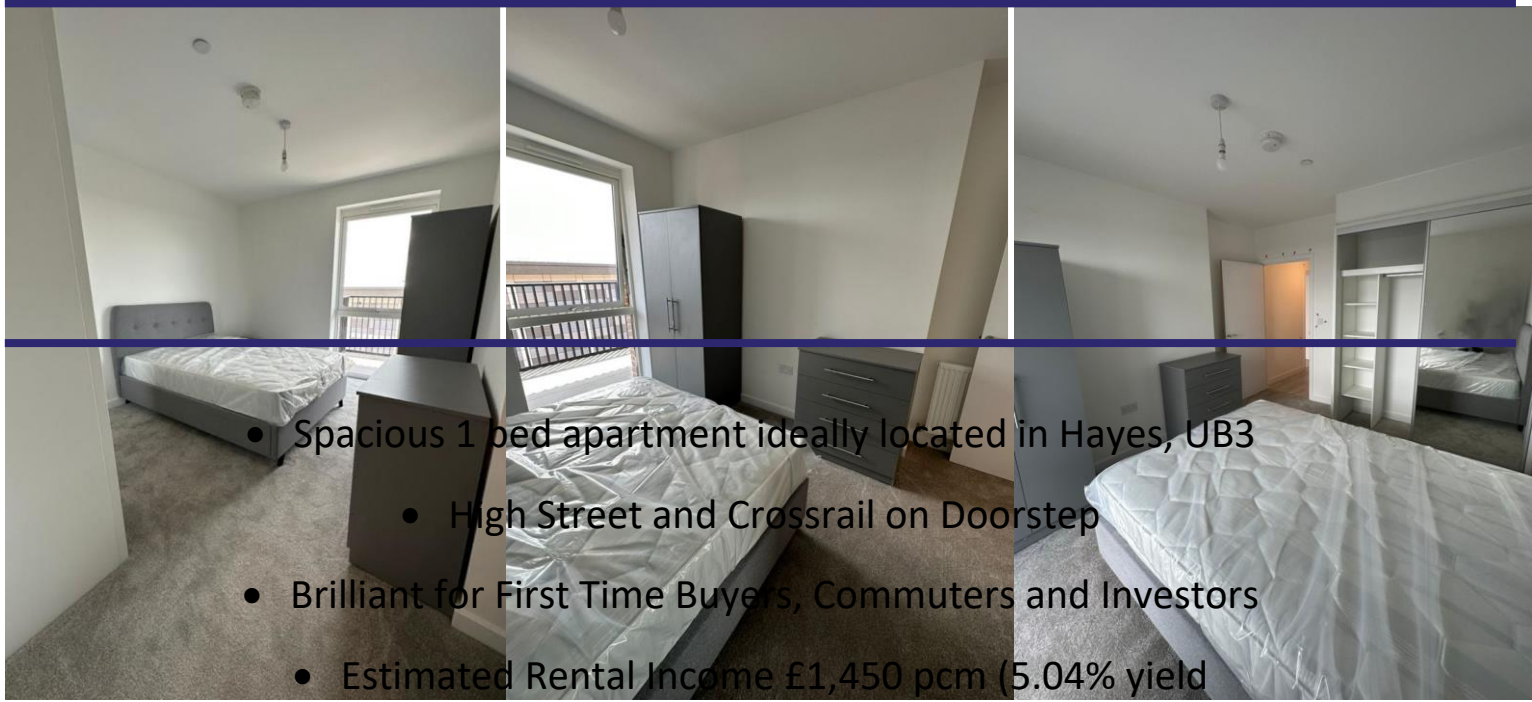


Farine Avenue | Hayes | UB3 4GE

£345,000

A Spacious 1 bedroom New Build apartment in Prime location of Hayes, UB3, offering easy access to the Crossrail, a significant transport link advantageous for commuting and travel. Positioned on the 4th floor, providing enhanced views, reduced street noise, and increased privacy. A comfortable and spacious bedroom, designed for flexibility in furniture arrangement and natural light. Generously sized living area, adaptable for various setups, potentially accommodating space for dining or home office. Modern, well-appointed kitchen area integrated into the living space for convenience and functionality. Stylish and equipped with contemporary fixtures and amenities. Access to building amenities like elevators, parking facilities, and communal spaces or services. Proximity to essential amenities such as shops, scenic views of the surroundings from its elevated position on the 4th floor. restaurants, parks, and High St.....



- Spacious 1 bed apartment ideally located in Hayes, UB3
- High Street and Crossrail on Doorstep
- Brilliant for First Time Buyers, Commuters and Investors
- Estimated Rental Income £1,450 pcm (5.04% yield)

• Call NOW for further details, viewings available

Contact Details

137 Western Road
 Southall
 Middlesex
 UB2 5HN

www.hiltons-estates.com
Harvin@hiltons-estates.com
 02088679555

Age	Energy rating	Current	Potential
92+	A		
81-91	B	85 B	85 B
69-80	C		
55-68	D		
39-54	E		
21-38	F		
1-20	G		

Agents Note: Whilst every care has been taken to prepare these sales particulars, they are for guidance purposes only. All measurements are approximate are for general guidance purposes only and whilst every care has been taken to ensure their accuracy, they should not be relied upon and potential buyers are advised to recheck the measurements