



Care | Delivery | Unity | Agility | Accountability | Trust



Morton Terrace Horsewood Road, Bridge Of Weir, PA11

3BR

Offers over £195,000



Wonderful, substantial 2 Bedroom first floor flat on Horsewood Road, Bridge of Weir. These flats have always been popular given the location and size.

A stylish flat that has retained many original features including corning etc. The high ceilings are further enhancing the traditional feel of the flat.

Entry to the rear and then further to the flats reception hallway.

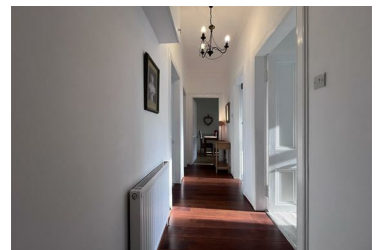
The lounge views to the front through near full height double glazed windows.

Large dining kitchen has fitted "Shaker" style wall and floor units, complimenting worktops and separate dining area.

Two double bedrooms with the master set the front to take advantage of the views, and bedroom 2 to the rear.

Four piece family bathroom has a white suite and over bath mains fed shower.

- Substantial 2 Bedroom First Floor Flat
- Generously sized Lounge
- Gas C/heating & Dglz
- Wonderful setting with views
- Dining fitted Kitchen
- Viewing is highly recommended



7 Hood Street Greenock, PA15 1YQ

Tel: 01475806043 Email: info@kilglen.co.uk <https://www.kilglen.co.uk>