



Care | Delivery | Unity | Agility | Accountability | Trust



48 Lintwhite Court, Bridge Of Weir, PA11 3NW

£800 Per month

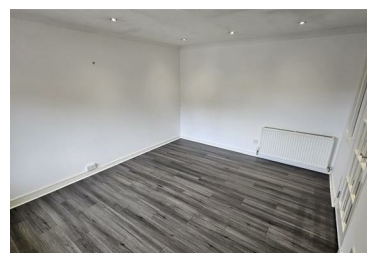


Welcome to Lintwhite Court, a charming purpose-built flat located in the picturesque village of Bridge of Weir. This delightful property boasts two well-proportioned bedrooms, making it an ideal choice for couples, small families, or those seeking a comfortable space to call home.

The flat offers a generous living area that is both inviting and functional. The layout is designed to maximise space and light, creating a warm and welcoming atmosphere throughout. The property features a modern bathroom, ensuring convenience and comfort for its residents.

One of the standout features of this flat is the private car park, providing secure and hassle-free parking for residents. This is particularly advantageous in a village setting, where parking can often be a concern.

- Landlord Reg: 15563/350/15370
- EPC Band C
- Private Parking
- Council Tax Band D
- 2 Bedrooms
- Top floor flat



7 Hood Street Greenock, PA15 1YQ

Tel: 01475806043 Email: info@kilglen.co.uk <https://www.kilglen.co.uk>