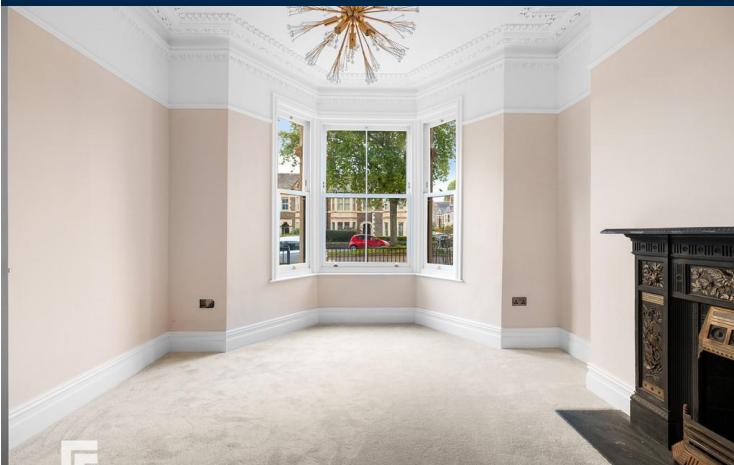




PLASTURTON AVENUE
PONTCANNA
CARDIFF CF11 9HL

£795,000



MID TERRACED HOUSE



4



2



2



3

****RENOVATED TO AN EXTREMELY HIGH STANDARD*** MGY are delighted to bring to market this exquisite, four storey, mid-terraced house in the highly sought after area of Pontcanna. The property is situated within walking distance to Pontcanna fields and the City Centre and is near a variety of cafes, restaurants, bars and shops. The accommodation briefly comprises entrance hallway, lounge, dining room, kitchen/diner. To the first floor, there are three double bedrooms - one with en suite, family bathroom and an additional double bedroom to the top floor. The property further benefits from a great sized rear garden with rear lane access. ***NO CHAIN***

TENURE: FREEHOLD

COUNCIL TAX BAND: G

FLOOR AREA APPROX: TBC

VIEWING: STRICTLY BY APPOINTMENT

ENTRANCE HALL

Entered via front door. Original tiled flooring. Coving to ceiling. Pendant light. Radiator. Stairs rising to first floor. Doors to lounge, dining room and kitchen/diner.

LOUNGE

15' 4" x 12' 5" (4.69m x 3.79m)
Double glazed sash bay window to front aspect. Deep skirting boards, original coving and cornicing to ceiling. Feature cast iron fireplace. Picture rail. Carpeted flooring. Alcoves. Radiator.

DINING ROOM

13' 1" x 11' 3" (4.00m x 3.44m)
Door with glazed window panel leading to outside courtyard. Wooden floorboards. Alcoves with open fire. Pendant light to ceiling. Coving and picture rail. Radiator.

KITCHEN/DINER

29' 11" x 15' 5" (9.12m x 4.71m)
Newly fitted kitchen with a range of wall, base and drawer units with granite worktops over incorporating induction hob with extractor above, and inset sink with mixer tap over. Integrated appliances such as dishwasher, and oven/grill. Mandarin natural stone tiled floor with underfloor heating. Spotlights. Bifold doors leading to rear garden. Space for dining table and chairs. Velux windows providing ample natural daylight.

FIRST FLOOR

Split level landing. Carpet to floor. Spotlights. Radiator. Doors to three bedrooms and family bathroom. Stairs rising to second floor.

BEDROOM ONE

17' 0" x 15' 4" (5.20m x 4.69m)
Located at the front of the house. Sash bay window with additional window to front. Carpet. Radiator. Picture rail. Pendant light.

BEDROOM TWO

12' 11" x 11' 3" (3.94m x 3.44m)
A second double bedroom. Double glazed sash window to rear aspect. Carpet to floor. Radiator. Picture rail. Spotlights.

BEDROOM THREE

10' 6" x 12' 5" (3.21m x 3.81m)
A third double bedroom. Double glazed sash window to rear aspect. Carpet to floor. Radiator. Picture rail. Spotlights. Door to ensuite shower room.

ENSUITE

7' 3" x 4' 10" (2.23m x 1.49m)
Fully tiled walls and flooring. Double glazed obscure sash window to rear aspect. Walk in shower cubicle with mains powered shower over and additional handheld shower attachment. Vanity wash hand basin with mixer tap over and storage beneath, wall mounted vanity mirror over. WC. Heated towel rail. Spotlights. Shaver point.

BATHROOM

11' 8" x 7' 4" (3.58m x 2.24m)
Fully tiled walls and flooring. Double glazed obscure sash window to --- aspect. Walk in shower cubicle with mains powered shower over and additional handheld shower attachment. Freestanding bath with mains shower attachment over. Vanity wash hand basin with mixer tap over and storage beneath. WC. Heated towel rail. Spotlights. Shaver point.



PLASTURTON AVENUE, PONTCANNA, CARDIFF CF11 9HL

SECOND FLOOR

Carpet to stairs. Spotlights. Door to bedroom four.

BEDROOM FOUR

17' 3" x 20' 4" (5.27m x 6.21m)

Carpet to floor. Velux windows to roof with ample natural daylight. Radiator. Spotlights.

OUTSIDE

Front - Gated front area.

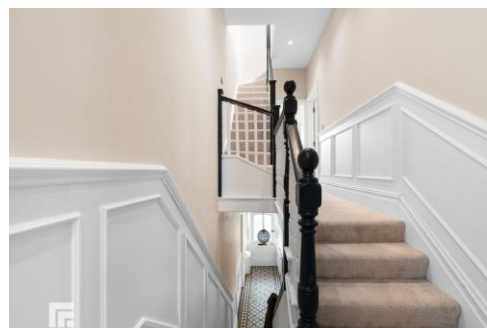
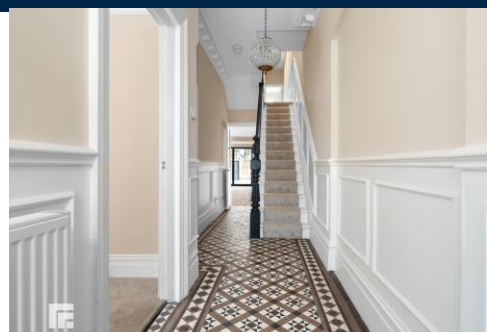
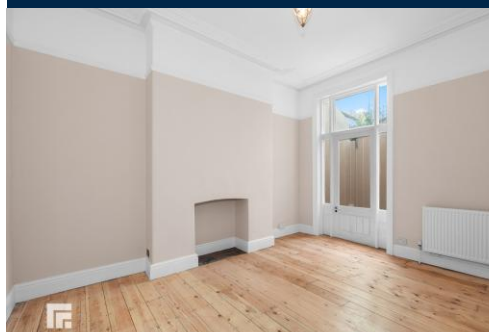
Rear - Paved low maintenance private garden. Wall and fence border. Gate with rear lane access.

TENURE

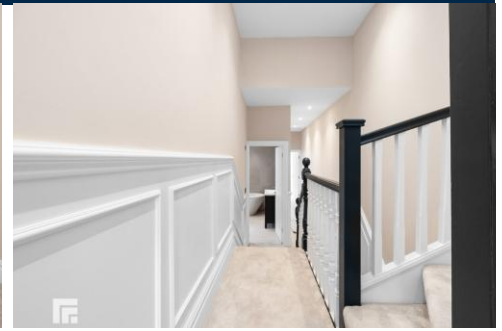
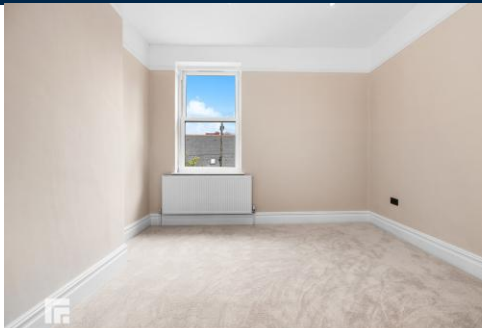
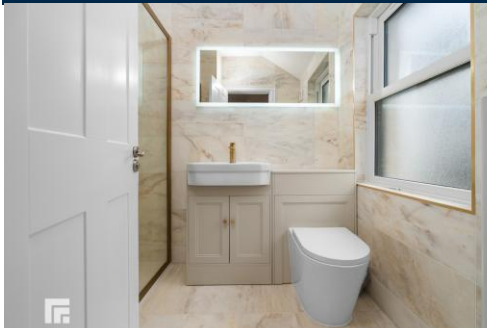
MGY are advised that the property is FREEHOLD and is CHAIN FREE.



PLASTURTON AVENUE, PONTCANNA, CARDIFF CF11 9HL



60 PLASTURTON AVENUE, PONTCANNA, CARDIFF CF11 9HL

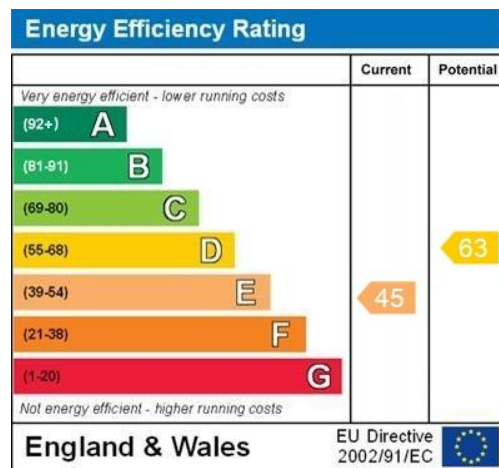


MGY.CO.UK

PLASTURTON AVENUE, PONTCANNA, CARDIFF CF11 9HL



Whilst every attempt has been made to ensure the accuracy of the floorplan contained here, measurements of doors, windows, rooms and any other items are approximate and no responsibility is taken for any error, omission or mis-statement. This plan is for illustrative purposes only and should be used as such by any prospective purchaser. The services, systems and appliances shown have not been tested and no guarantee as to their operability or efficiency can be given.
Made with Metropix ©2025



PONTCANNA 029 20397 152

95 Pontcanna Street, Pontcanna, Cardiff,
CF11 9HS



Important Notice: These particulars are prepared for guidance only and do not form whole or any part of any offer or contract. Whilst the particulars are given in good faith, they are not to be relied upon as being a statement or representation of fact. They are made without responsibility on the part of MGY Ltd or Vendor/lessor and the prospective purchaser/lessee should satisfy themselves by inspection or otherwise as to their accuracy. Neither MGY Ltd nor anyone in their employ, or the vendor/lessor, imply, make or give any representation/warranty whatsoever in relation to this property.

MGY.CO.UK