



VICTORIA COURT
CONYBEARE ROAD
CARDIFF CF5 1GD

ASKING PRICE OF
£165,000



TOP FLOOR APARTMENT



2



1



1



1

****TWO BEDROOM APARTMENT* *NO CHAIN**** MGY are pleased to offer for sale this two bedroom, top floor apartment. A well presented two bedroom top floor apartment in an impressive development, situated in the heart of Victoria Park with a variety of shops, cafe's and restaurants close by and with easy access to the City Centre. The accommodation comprises entrance hall, open plan lounge/diner and separate kitchen, two bedrooms and bathroom. The property further benefits from gas central heating and double glazing throughout. Viewing highly recommended.

ENTRANCE HALL

Entered via wooden door with security spy hole leading from communal hallway. Loft hatch. Carpet to floor. Pendant light to ceiling. Doors to kitchen and lounge/diner.

LOUNGE/DINER

15' 8" x 17' 0" (4.78m x 5.20m)

Two uPVC double glazed windows to front aspect with fitted roller blinds. Pendant light to ceiling. Carpet to floor. TV Point. Space for dining. Radiator. PowerPoints.

KITCHEN

9' 3" x 7' 6" (2.84m x 2.29m)

uPVC double glazed window to front aspect with fitted roller blind. Fitted kitchen with a range of wall and base units across three walls with round edged worktops over which incorporates undemounted stainless steel sink and drainer with mixer tap over. Integrated electric oven with four ring gas hob, extractor above and splashback. Space for fridge freezer and plumbing for washing machine. Vinyl flooring. PowerPoints. Spotlights.

TENURE: LEASEHOLD

COUNCIL TAX BAND: D

FLOOR AREA APPROX: 678 SQ FT

VIEWING: STRICTLY BY APPOINTMENT

BEDROOM ONE

11' 0" x 9' 11" (3.36m x 3.03m)

Large uPVC double glazed window to side aspect. Carpet to floor. Fitted sliding door wardrobes across one wall. Pendant light to ceiling. Radiator. PowerPoints.

BEDROOM TWO

8' 5" x 8' 6" (2.59m x 2.60m)

uPVC double glazed window to front aspect with fitted roller blind. Carpet to floor. Pendant light to ceiling. Radiator. PowerPoints.

BATHROOM

4' 9" x 8' 5" (1.45m x 2.58m)

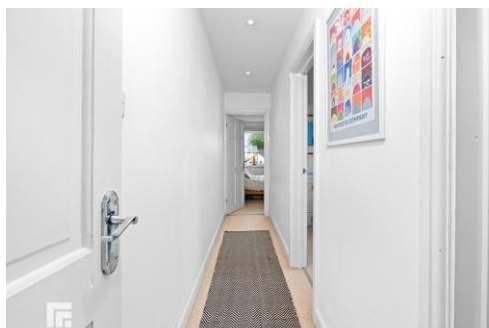
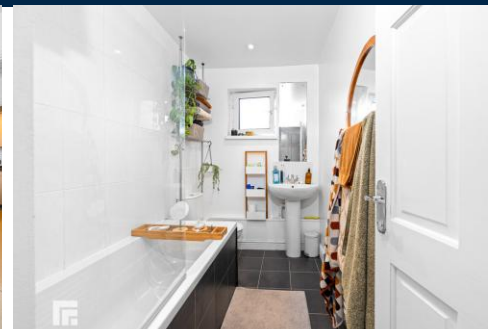
White suite comprising pedestal wash hand basin with mixer tap over, panelled bath with mains shower and mixer tap over with glass shower screen. WC. Vinyl floor. Heated towel rail. Extractor. Spotlights.

TENURE

MGY are advised that the property is leasehold with a term of 937 year remaining. Service charges of £720 per annum, which includes building insurance, maintenance of internal and external communal areas, regular cleaning and refuse disposal.

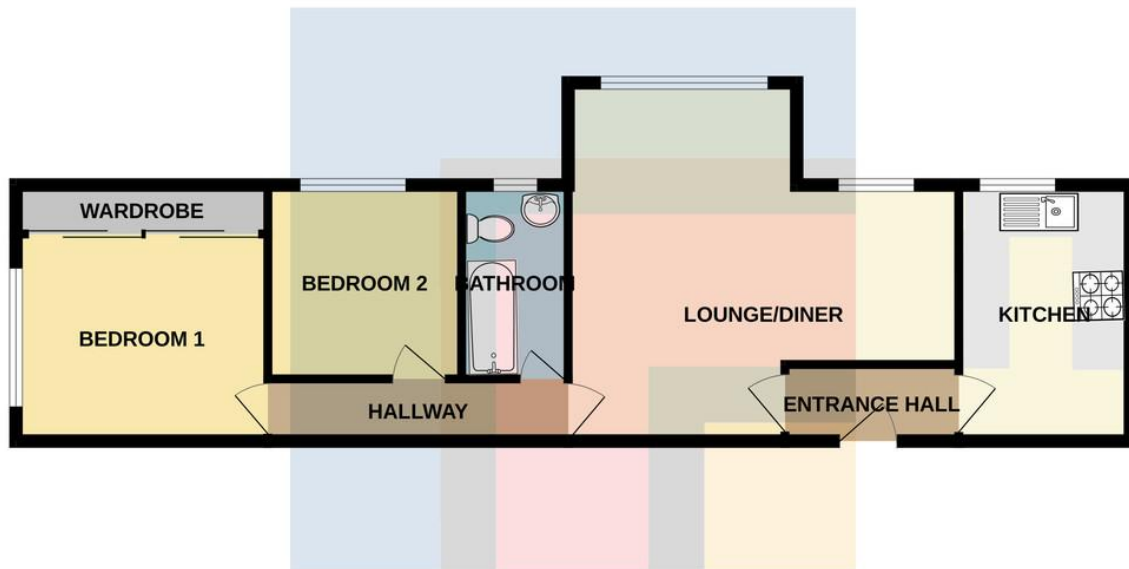


VICTORIA COURT, CONYBEARE ROAD, CARDIFF CF5 1GD

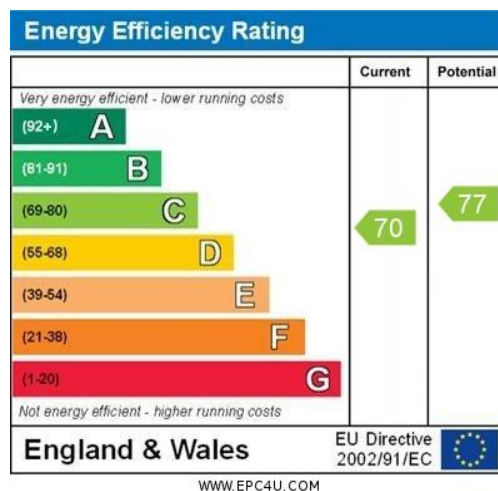


VICTORIA COURT, CONYBEARE ROAD, CARDIFF CF5 1GD

TOP FLOOR



Whilst every attempt has been made to ensure the accuracy of the floorplan contained here, measurements of doors, windows, rooms and any other items are approximate and no responsibility is taken for any error, omission or mis-statement. This plan is for illustrative purposes only and should be used as such by any prospective purchaser. The services, systems and appliances shown have not been tested and no guarantee as to their operability or efficiency can be given.
Made with Metropix ©2025



PONTCANNA 02920 397152

95 Pontcanna Street, Pontcanna, Cardiff, South Glamorgan, CF11 9HS



Important Notice: These particulars are prepared for guidance only and do not form whole or any part of any offer or contract. Whilst the particulars are given in good faith, they are not to be relied upon as being a statement or representation of fact. They are made without responsibility on the part of MGY Ltd or Vendor/lessor and the prospective purchaser/lessee should satisfy themselves by inspection or other wise as to their accuracy. Neither MGY Ltd nor anyone in their employ, or the vendor/lessor, imply, make or give any representation/warranty whatsoever in relation to this property.

MGY.CO.UK