



CRANMER COURT
ELY ROAD
LLANDAFF CF5 2JD

ASKING PRICE OF
£875,000



BUNGALOW



4



3



3



2

A RARE OPPORTUNITY TO ACQUIRE A LARGE DETACHED BUNGALOW SITUATED IN THE HEART OF LLANDAFF MGY are delighted to bring to market this four bedroom, detached bungalow located in the quiet and private development of Cranmer Court in the heart of Llandaff. The accommodation briefly comprises entrance porch, lounge, kitchen/diner, lobby/study, utility room, four bedrooms - two with ensembles, WC, and bathroom. The property further benefits from a large rear garden, off road parking for two vehicles and is chain free. *Viewing highly recommended*

TENURE: FREEHOLD

COUNCIL TAX BAND: H

FLOOR AREA APPROX: 1,856 SQ FT

VIEWING: STRICTLY BY APPOINTMENT

ENTRANCE HALL

Entered via front door leading from porch. Spotlights. Radiators. Double glazed window to rear garden. Power points. Wood flooring. Doors to all rooms.

LOUNGE

19' 5" x 14' 10" (5.92m x 4.53m)
Carpet to floor. Spotlights. Gas fireplace. Radiator. Power points. Double glazed sliding doors leading to rear garden.

KITCHEN

19' 5" x 7' 11" (5.92m x 2.43m)
Wood flooring. Fitted kitchen with a range of wall, base and drawer units with worktops over incorporating four ring gas hob with extractor above and oven beneath, and stainless steel sink and drainer with mixer tap over. Integrated fridge and dishwasher. Tiled splashbacks. Double glazed window to front aspect. Spotlights. Power points. Radiator.

UTILITY ROOM

12' 11" x 7' 1" (3.95m x 2.16m)
Tiled flooring. Range of wall and base units with worktops over incorporating stainless steel sink with hot and cold tap over. Space for appliances such as washing machine, fridge/freezer, tumble dryer etc. Wall mounted combi boiler. Spotlights. Door leading to front garden/parking. Radiator.

WC

7' 1" x 5' 9" (2.16m x 1.76m)
Black and White tiled flooring. Spotlights. WC. Pedestal wash hand basin with mixer tap over. Obscure window to front aspect. Built in storage cupboard with shelving. Radiator.

BATHROOM

7' 2" x 6' 3" (2.20m x 1.92m)
Fully tiled walls and flooring. White three-piece-suite comprising WC, Pedestal wash hand basin with mixer tap over, and panelled bath with hot and cold tap over and mains powered handheld shower attachment above. Spotlights. Wall mounted mirror. Extractor fan.

BEDROOM ONE

26' 2" x 12' 4" (7.98m x 3.78m)
Carpet to floor. Fitted wardrobes. Spotlights. Power points. Radiator. Double glazed window to rear aspect with additional double glazed sliding doors leading to rear garden. Door leading to :-

ENSUITE

8' 2" x 7' 8" (2.51m x 2.36m)
Carpet to floor. Partially tiled walls. Panelled bath with hot and cold tap over. WC. Pedestal wash hand basin with mixer tap over. Obscure window to side aspect. Spotlights. Extractor fan. Radiator.

BEDROOM TWO

16' 9" x 12' 6" (5.12m x 3.82m)
Carpet to floor. Fitted wardrobes. Spotlights. Power points. Radiator. Double glazed window to rear aspect. Door leading to:-



CRANMER COURT, ELY ROAD, LLANDAFF, CF5 2JD

ENSUITE

6' 3" x 5' 9" (1.92m x 1.76m)

Tiled flooring and partially tiled walls. Walk in shower cubicle with mains powered shower. WC. Pedestal wash hand basin with mixer tap over. Radiator. Power points. Radiator.

BEDROOM THREE

16' 9" x 9' 0" (5.12m x 2.76m)

Carpet to floor. Spotlights. Fitted wardrobes. Power points. Radiator. Double glazed window to rear aspect.

BEDROOM FOUR

15' 4" x 6' 5" (4.69m x 1.97m)

Carpet to floor. Fitted wardrobes. Power points. Radiator. Spotlights. Window to rear aspect.

LOFT

Large Attic Space which has been boarded in places with insulation throughout. Scope to extend upwards.

OUTSIDE

Front - Paved. Carport with two parking spaces. Access to rear garden around side.

Rear - Laid to patio. Shingled area. Wall border. Flower beds. Pergola with space for seating beneath.

TENURE

MGY have been advised that this property is FREEHOLD.



CRANMER COURT, ELY ROAD, LLANDAFF, CF5 2JD

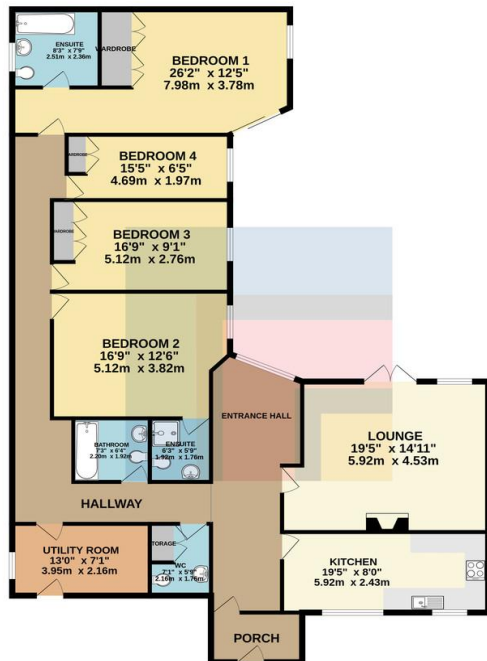


CRANMER COURT, ELY ROAD, LLANDAFF, CF5 2JD



CRANMER COURT, ELY ROAD, LLANDAFF, CF5 2JD

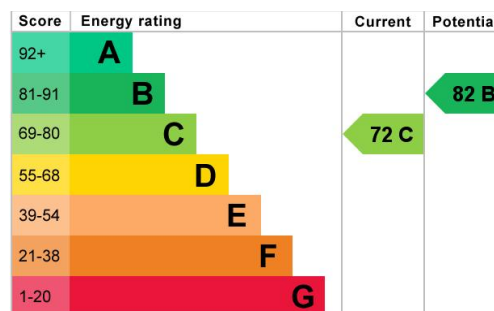
GROUND FLOOR
1856 sq.ft. (172.4 sq.m.) approx.



TOTAL FLOOR AREA : 1856 sq.ft. (172.4 sq.m.) approx.

Whilst every attempt has been made to ensure the accuracy of the floorplan contained here, measurements of doors, windows, rooms and any other items are approximate and no responsibility is taken for any error, omission or mis-statement. This plan is for illustrative purposes only and should be used as such by any prospective purchaser. The services, systems and appliances shown have not been tested and no guarantee as to their operability or efficiency can be given.

Made with Metropix ©2024



PONTCANNA 02920 397152

95 Pontcanna Street, Pontcanna, Cardiff, South
Glamorgan, CF11 9HS



Important Notice: These particulars are prepared for guidance only and do not form whole or any part of any offer or contract. Whilst the particulars are given in good faith, they are not to be relied upon as being a statement or representation of fact. They are made without responsibility on the part of MGY Ltd or Vendor/lessor and the prospective purchaser/lessee should satisfy themselves by inspection or otherwise as to their accuracy. Neither MGY Ltd nor anyone in their employ, or the vendor/lessor, imply, make or give any representation/warranty whatsoever in relation to this property.

MGY.CO.UK