

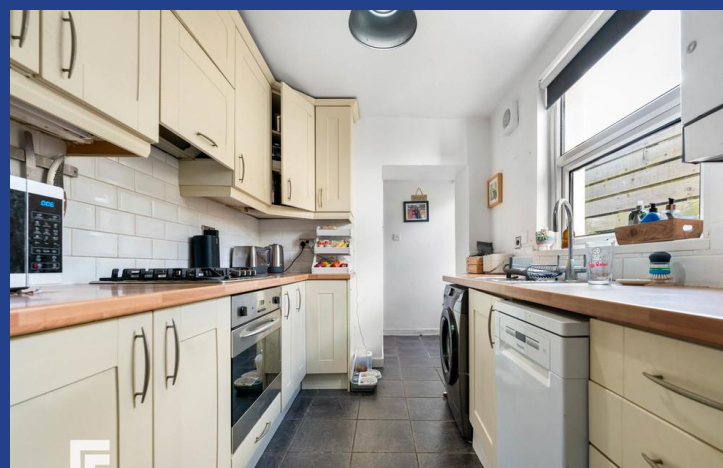
Pembroke Road, Canton, Cardiff, CF5 1QP



Estate Agents and
Chartered Surveyors

Asking Price Of

£350,000



End Terraced House

3

1

0

1

Property Description

****RARELY AVAILABLE AND IMMACULATELY PRESENTED**** MGY are delighted to bring to market this very well presented, three bedroom, end-terraced property situated on the much favoured Pembroke Road, Canton. The property has undergone some redesigning and benefits from many original features mixed with high specification contemporary living. The accommodation briefly comprises lounge/diner, kitchen, downstairs bathroom, and three double bedrooms. The property further benefits from gas central heating and double glazing throughout and has a beautifully landscaped and low maintenance, south facing garden.

Tenure Freehold

Council Tax Band E

Floor Area Approx 869 sq ft

**Viewing Arrangements
Strictly by appointment**

ENTRANCE HALL

Entered via wooden front door leading from courtyard into porch. Additional wooden door with single glazed stained glass leading to hallway.

LOUNGE/DINER

22' 3" x 14' 8" (6.79m x 4.49m)

Double glazed bay window to front aspect. Wooden flooring. Pendant light fittings. Feature fireplace with fully functional log burner. Built in storage to alcoves, one of which houses TV and telephone point. Two radiators. Under stairs storage cupboard. Double glazed door leading to rear garden. Power points.

KITCHEN

11' 1" x 7' 5" (3.38m x 2.27m)

Double glazed windows to the side aspect. Tiled flooring. Fitted kitchen with wooden work surfaces over incorporating stainless steel sink with hot and cold tap over, and four ring gas hob with extractor above and oven beneath. Space for fridge freezer and slimline dishwasher. Space and plumbing for washing machine. Tiled splash backs. Under counter lighting. Power points. Door leading to hall that provides access to the rear garden. Pendant light fitting. Wall mounted Combi boiler.

BATHROOM

11' 1" x 6' 7" (3.40m x 2.01m)

Double glazed obscure window to side. Tiled flooring and partially tiled walls. Pedestal wash hand basin with mixer tap over. WC. Panelled bath with hot and cold tap over and mains powered shower above. Heated towel rail. Spotlights.

Pembroke Road, Canton, Cardiff, CF5 1QP

FIRST FLOOR

Split level landing. Carpet to floor. Storage cupboard at top of stairs. Pendant light fitting. Doors to all bedrooms. Loft hatch.

BEDROOM ONE

14' 8" x 9' 10" (4.49m x 3.01m)

Two double glazed windows to front aspect. Original wooden flooring. Large fitted sliding wardrobes. Radiator. Power points. Pendant light fitting.

BEDROOM TWO

11' 4" x 8' 7" (3.46m x 2.63m)

Double glazed window to rear aspect. Carpet to floor. Pendant light fitting. Radiator. Power points.

BEDROOM THREE

11' 1" x 7' 5" (3.38m x 2.27m)

Carpeted flooring. Double glazed window to rear aspect. Radiator. Pendant light fitting. Power points.

LOFT ROOM

Access via pull down ladder. Boarded with carpeted flooring. Two skylights. Lighting and access to electric.

OUTSIDE

Front - Slabbed frontage and newly tiled footpath.
Rear - Beautiful south facing landscaped garden. Fenced border. Outside tap. Part slabbed and part artificial grass. Wooden sleepers with decorative garden stone.

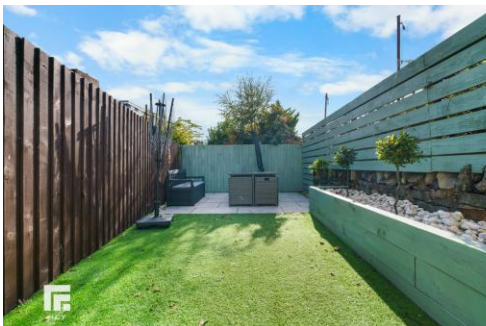
TENURE

MGY are advised that the property is freehold.

Pembroke Road,
Canton, Cardiff, CF5 1QP

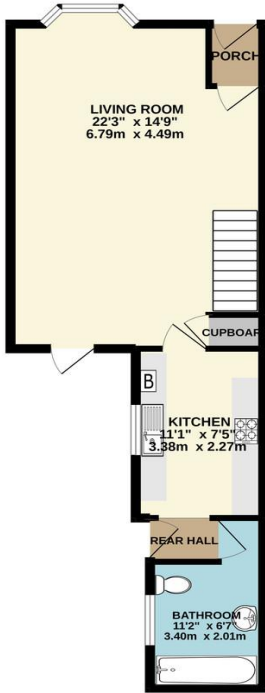


Pembroke Road,
Canton, Cardiff, CF5 1QP

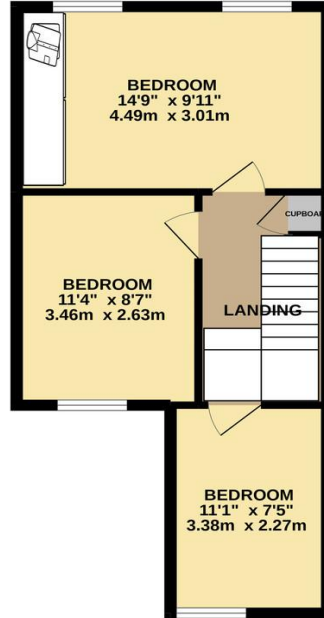


Pembroke Road, Canton, Cardiff, CF5 1QP

GROUND FLOOR
474 sq.ft. (44.0 sq.m.) approx.

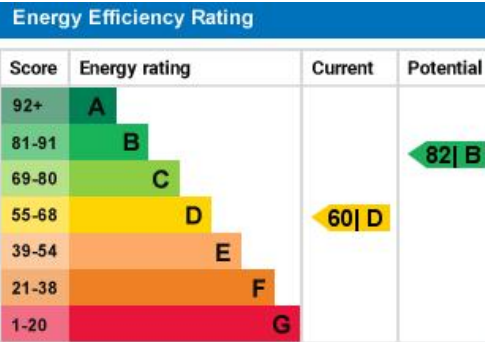


1ST FLOOR
395 sq.ft. (36.7 sq.m.) approx.



TOTAL FLOOR AREA: 869 sq.ft. (80.7 sq.m.) approx.

Whilst every attempt has been made to ensure the accuracy of the floorplan contained here, measurements of doors, windows, rooms and any other items are approximate and no responsibility is taken for any error, omission or mis-statement. This plan is for illustrative purposes only and should be used as such by any prospective purchaser. The services, systems and appliances shown have not been tested and no guarantee as to their operability or efficiency can be given.
Made with Metrepx 12/2022



Pontcanna 02920 397152

95 Pontcanna Street, Pontcanna, Cardiff, South
Glamorgan, CF11 9HS



mgyc.co.uk

Important Notice: These particulars are prepared for guidance only and do not form whole or any part of any offer or contract. Whilst the particulars are given in good faith, they are not to be relied upon as being a statement or representation of fact. They are made without responsibility on the part of MGY Ltd or Vendor/lessor and the prospective purchaser/lessee should satisfy themselves by inspection or otherwise as to their accuracy. Neither MGY Ltd nor anyone in their employ, or the vendor/lessor, imply, make or give any representation/warranty whatsoever in relation to this property.