

PRINTING HOUSE SQUARE



PRINTING HOUSE SQUARE

GUILDFORD, SURREY, GU1 4AJ

A substantial one bedroom, two bathroom apartment situated in the popular Printing House Square development in the heart of Guildford Town Centre.

Available: 30th March 2025

£1,700 PCM (Per Calendar Month)

Flat, 1 Bedroom, 1 Bathroom, 1 Reception,
Furnished

Key Features

- One bedroom
- Two bathrooms
- Underground parking
- Town centre location
- Substantial footprint
- Available in March





THE PROPERTY

Description

Accommodation comprises lounge/dining room with balcony, stylish kitchen, spacious double bedroom with built in wardrobes and a white suite ensuite bathroom with shower. You will also find a further family bathroom with a bath. The property also benefits from secure underground parking and private storage area.



Location

Printing house square is a very secure development located in the heart of Guildford town centre within walking distance of all of the shops, restaurant and nightlife that Guildford has to offer.

Available at the end of March on a furnished basis.

Guildford Borough Council tax band C

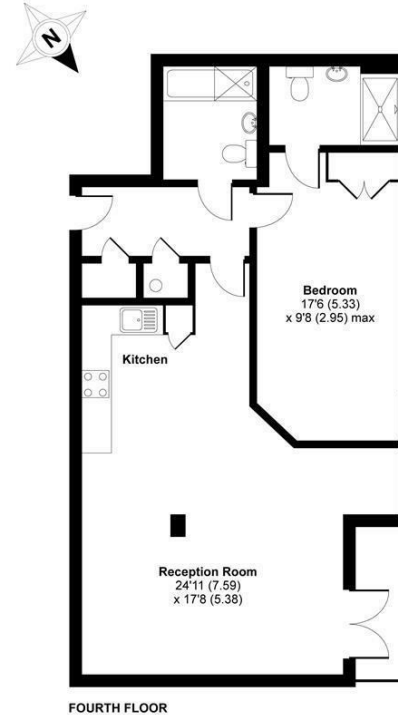
Holding deposit: £392

EPC B



Martyr Road, Guildford, GU1

APPROX. GROSS INTERNAL FLOOR AREA 797 SQ FT 74 SQ METRES



Whilst every attempt has been made to ensure the accuracy of the floor plan contained here, measurements of doors, windows and rooms are approximate and no responsibility is taken for any error, omission or misstatement. These plans are for representation purposes only as defined by RICS Code of Measuring Practice and should be used as such by any prospective purchaser. Specifically no guarantee is given on the total square footage of the property if quoted on this plan. Any figure given is for initial guidance only and should not be relied on as a basis of valuation.

Copyright nichecom.co.uk 2018 Produced for Grantleys REF : 356935

Guildford

Poyle House 24 Epsom Road
Guildford
Surrey
GU1 3LE

Tel: 01483 407600

