

# THE STREET





# THE STREET

GUILDFORD, SURREY, GU3 1AR

A deceptively spacious, characterful cottage offering versatile accommodation in the heart of the village of Puttenham.

Available: 28th June 2025

£2,500 PCM (Per Calendar Month)

House - Semi-Detached, 3 Bedroom, 2 Bathroom, 2 Reception,  
Unfurnished

## Key Features

- Village Location
- Three bedrooms
- Two bathrooms
- On street parking
- Wrap around garden
- Storage Barn







## THE PROPERTY

### Description

Comprising of three double bedrooms, a bathroom, a dressing room, a lounge with a wood burner, a further carpeted second reception room and a converted cellar perfect for a study or a cinema room, the house offers spacious accommodation ideal for a family.

The garden wraps around the house on all three sides and there is a lovely private patio area and a large storage barn to complement the cottage.



## Location

The property is located in the middle of the village of Puttenham, a short walk to the local infant's school, public house and church. Puttenham Common is not far away with beautiful walks. The road connections are excellent, with Guildford circa 5 miles away with it's mainline station and excellent shopping and entertainment.

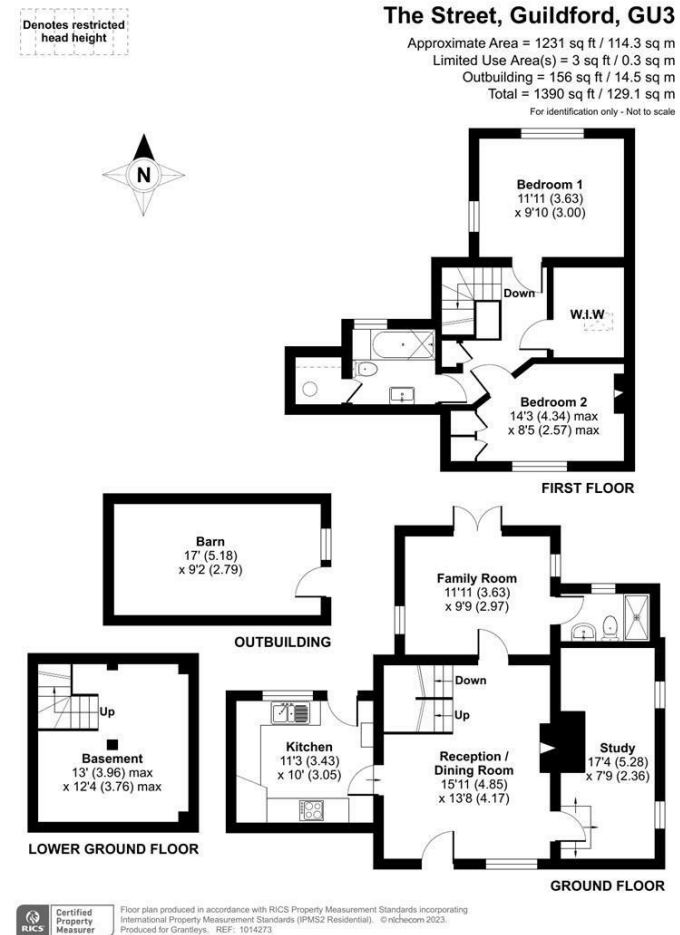
Pets are considered on a case-by-case basis.

Guildford Borough Council tax band F

EPC Rating C

Holding Deposit: £576

Available June



## Guildford

Poyle House 24 Epsom Road  
Guildford  
Surrey  
GU1 3LE

Tel: 01483 407600

