

# AUSTEN HOUSE



# AUSTEN HOUSE

GUILDFORD, SURREY, GU1 4AX

Two bedroom, two bathroom fourth floor apartment with secure underground parking for one car located in Guildford town centre.

Available: 8th July 2025

£1,850 PCM (Per Calendar Month)

Flat, 2 Bedroom, 2 Bathroom, 1 Reception,  
Unfurnished

## Key Features

- Two bedrooms
- Two bathrooms
- Central location
- Secure underground parking for one car
- Available July





## THE PROPERTY

### Description

A top floor, two bedroom apartment in the Station View development. This is one of the largest apartments in the development with balcony and views over Guildford. Spacious master bedroom with double fitted wardrobes and ensuite shower room, second double bedroom and family bathroom, open plan reception with contemporary fully fitted kitchen. Secure allocated parking provided for one car.



## Location

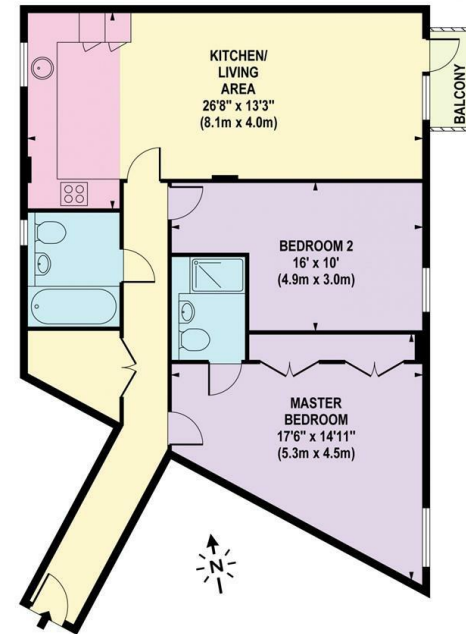
Station View is located in a very central position in Guildford, within a very short walk of the main line station as well as the main shopping district.

Available July

Guildford Borough Council tax band D

EPC band B

Holding deposit: £426



FOURTH FLOOR

APPROX. GROSS INTERNAL FLOOR AREA 891 SQ FT / 83 SQ M

Whilst every attempt has been made to ensure the accuracy of the floorplan contained here, measurements of doors, windows and rooms are approximate and no responsibility is taken for any error omission or mis-statement. These plans are for representation purposes only and should be used as such by any prospective purchaser / tenant. The services, systems and appliances listed in this specification have not been tested and no guarantee as to their operating ability or their efficiency can be given

© www.squarefootuk.com

## Guildford

Poyle House 24 Epsom Road  
Guildford  
Surrey  
GU1 3LE

Tel: 01483 407600

