

HAYDON PLACE



HAYDON PLACE

SURREY, GU1 4LR

Stunning modern, two double bedroom town house in an excellent Guildford town centre position with off street parking. Available in May.

Available: 14th May 2025

£1,800 PCM (Per Calendar Month)

House - Terraced, 2 Bedroom, 2 Bathroom, 1 Reception, Unfurnished

Key Features

- Town centre location
- Off street parking for one car
- Two bedrooms
- Two bathrooms
- High specification appliances





THE PROPERTY

Description

The property has been built to a very high specification, including oak flooring, under floor heating on the ground floor and mood lighting system.

On the ground floor is an open plan kitchen and living area fitted with Miele oven, hob, extractor, dishwasher, fridge & freezer.

On the first floor is the master double bedroom with wood flooring, a bathroom with automatic lighting and a laundry room with Bosch washing machine and tumble dryer. The second floor includes a second double bedroom/study with carpet and a shower room, also with automatic lighting.

Outside to the front is off street parking for one car.



Location

Haydon Place is located in the very heart of Guildford town centre, with the new Waitrose on your door step. Guildford High Street is a short walk away and provides a large selection of shops, nightlife and restaurants, also within walking distance is Guildford main line station with regular, fast trains to London Waterloo.

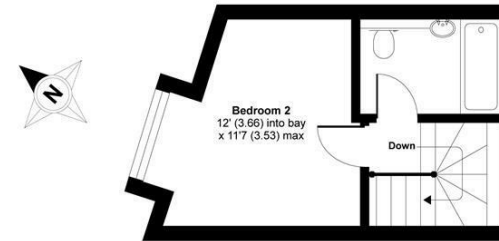
NB The letting of this property is on behalf of a Connected Person to Grantley

Available in May
Guildford council band D
EPC rating C
Holding deposit £415

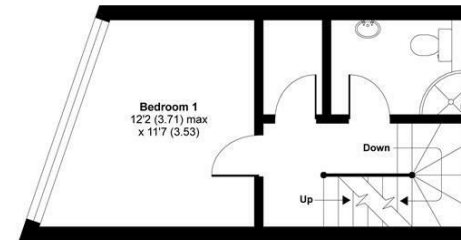


Haydon Place, Guildford, GU1

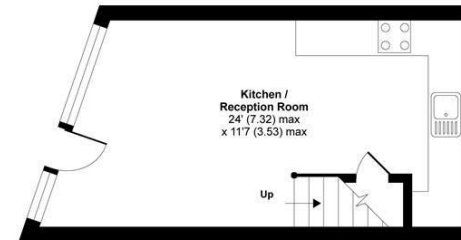
APPROX. GROSS INTERNAL FLOOR AREA 726 SQ FT 67.4 SQ METRES



SECOND FLOOR



FIRST FLOOR



GROUND FLOOR

Whilst every attempt has been made to ensure the accuracy of the floor plan contained here, measurements of doors, windows and rooms are approximate and no responsibility is taken for any error, omission or misstatement. These plans are for representation purposes only as defined by RICS Code of Measuring Practice and should be used as such by any prospective purchaser. Specifically no guarantee is given on the total square footage of the property if quoted on this plan. Any figure given is for initial guidance only and should not be relied on as a basis of valuation.

Copyright nichecom.co.uk 2019 Produced for Grantleys REF : 523450

Guildford

Poyle House 24 Epsom Road
Guildford
Surrey
GU1 3LE

Tel: 01483 407600

